

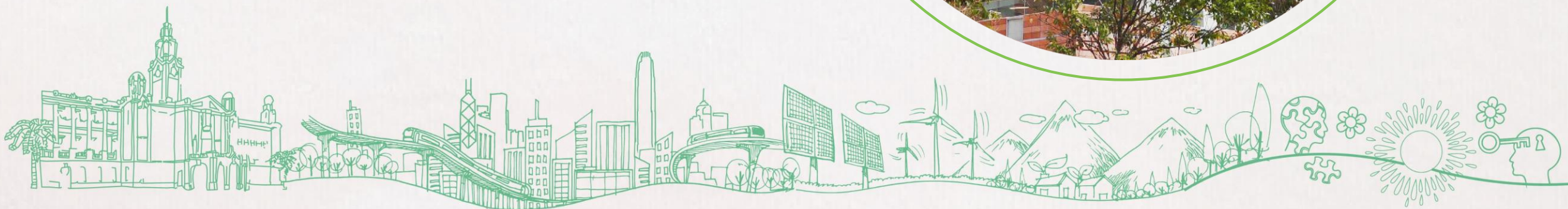
# Experiential Learning 1001 - How to fulfill **Social Innovation** & **Global Citizenship** requirements?

October 8, 2020



Faculty of  
**Social Sciences**  
The University of Hong Kong

香港大學社會科學學院





**Associate Dean (Undergraduate): Dr Lucy Jordan**

**Faculty Experiential Learning Team**

**Ms Elsa Lam**  
**Director, Experiential Learning**  
**Email: [lamelsa@hku.hk](mailto:lamelsa@hku.hk)**

**Mr Ken Yau**  
**Assistant Director, Experiential Learning**  
**Email: [tkyau@hku.hk](mailto:tkyau@hku.hk)**

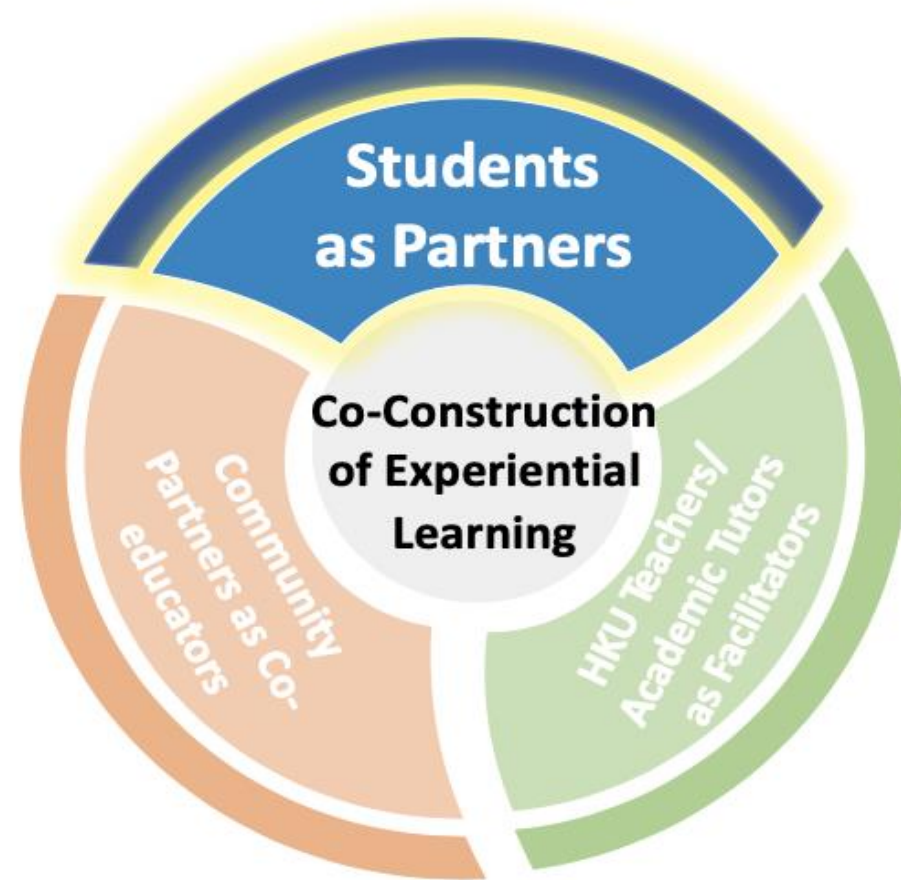
**Ms Winky Wu**  
**Assistant Lecturer (Experiential Learning)**  
**Email: [winkywmt@hku.hk](mailto:winkywmt@hku.hk)**

**General enquiry: [socii@hku.hk](mailto:socii@hku.hk)**



# Co-construction of Learning

## Our Approach





# SOCIAL INNOVATION AND GLOBAL CITIZENSHIP



# High Impact Practices (Kuh, 2008)

“... one thing... to enhance student engagement and increase student success?”

“make it possible for every student to participate in at least two high-impact activities during your undergraduate program.” (Kuh, 2008, p.21)

Kuh, George D. (2008). “High-impact educational practices: What they are, who has access to them, and why they matter.” AAC&U, Washington, D.C. 34 pp.

# High Impact Practices (Kuh, 2008)

- Internship (*direct service in a work setting*)
- Service-learning (*dual purposes of benefiting the community and fulfilling academic learning*)
- Study Away (*diversity/global learning*)
- Undergraduate Research

## Benefits

- Transfer of learning to other settings
- Provide authentic ways of students to demonstrate their competence
- Enhanced clarity about students' educational and life goals

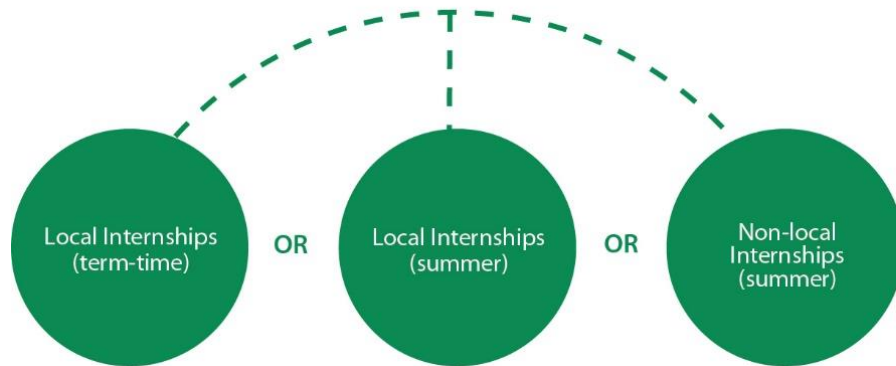


# SOCIAL INNOVATION AND GLOBAL CITIZENSHIP

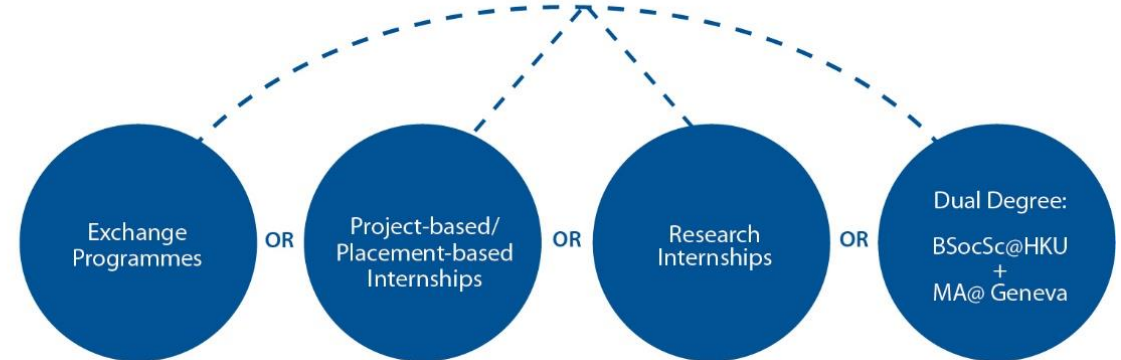
**SIGC**  
24 CREDITS



OR



OR



# Social Innovation

- Credit-bearing, non-paid internship, learning in community
- Required for students in BSocSc, BEd&BSocSc and BASc curriculums
- Optional for students in BSocSc(Govt&Laws) and BSocSc(Govt&Laws)&LLB curriculums (either SI or GC)
- Designed to stretch, not primarily vocational
- A variety of community partners: local and international NGOs, think-tanks, political parties and social enterprises, etc.

## Local Internships (term-time)

Internships organised or approved by Faculty (term-time spreading across two semesters, one full day or two half days per week)

## Local Internships (summer)

Full-time internships organised or approved by Faculty (8 weeks in summer, five days per week)

## Non-local Internships

Overseas internships organised or approved by Faculty, e.g. GloCal Projects (8 weeks in summer)





# Global Citizenship

- Credit bearing, outside of HK academic experience
- Required for students in BJ, BSocSc, BEd&BSocSc curriculums
- Optional for students in BSocSc(Govt&Laws) and BSocSc(Govt&Laws)&LLB curriculums (either SI or GC)
- From 8 weeks to 1 year, many programmes to choose from



## Exchange Programmes (1 semester to 1 year)

Overseas exchange programmes under University-level, Faculty-level or Departmental-level

## Project-based/ Placement-based Internships

Overseas placement-based internships organised or approved by Faculty, e.g. GloCal, GC@Home (8 weeks in summer)

## Research Internships

Globalink Research Internship (GRI) in Canada (12 weeks) or Laidlaw Scholar Programme (8-10 weeks) hosted by UK institutions

## Dual Degree Programme (BSocSc + MA)

3 years at HKU and 2 years at Geneva

# Student-initiated Internships

- Apart from the opportunities arranged by the Faculty, students may propose internship opportunity that fits their interests and strengths
- Students should receive formal approval from the Faculty before the start of student-initiated internship
- No retrospective internship will be considered
- **Application period for Summer 2021:**



**August 3 – November 6 (noon), 2020**

Details: <https://www.socsc.hku.hk/sigc/resources/internships/internships/self-initiated-internship/>



global  
Citizenship

12 credits

social  
innovation

12 credits

# Internship Community Partners



Faculty of  
**Social Sciences**  
The University of Hong Kong  
香港大學社會科學學院

社  
科  
人  
Scientist

Total No. of CPs > 160



global  
Citizenship

12 credits

# Exchange Partners



THE UNIVERSITY OF  
NEW SOUTH WALES



University of London



University of Oxford



ITHACA COLLEGE



THE UNIVERSITY OF  
SYDNEY



UCLA



THE UNIVERSITY OF AUCKLAND  
NEW ZEALAND



SciencesPo.



The University of  
Nottingham



HS PF



Brooklyn Law School  
ESTABLISHED 1901

University of  
Kent



University of  
BRISTOL

University of Essex



WASEDA University



UNIVERSITÉ  
BISHOP'S  
UNIVERSITY

HS PF



INDIANA UNIVERSITY



福建医科大学  
FUJIAN MEDICAL UNIVERSITY



大阪大学  
OSAKA UNIVERSITY



OSTBAYERISCHE  
TECHNISCHE HOCHSCHULE  
REGENSBURG



Discover  
Excellence.



EMBRY-RIDDLE  
Aeronautical University



JUNTENDO UNIVERSITY  
Established 1838



HOKKAIDO UNIVERSITY OF EDUCATION  
国立大学法人 北海道教育大学



ILLINOIS STATE UNIVERSITY



Faculty of  
Social Sciences  
The University of Hong Kong

香港大學社會科學學院

社  
科  
人  
Scientist



# What are the combinations of SIGC?

**global  
Citizenship**

12 credits

**Social  
Innovation**

12 credits

**Social Innovation (SI) + Global Citizenship (GC)**

**Local Internships + International Exchange Programme**

**Local Internships + Non-local Internships (project-based)**

**Non-local Internships + Global Citizenship at Home**

**Non-local Internships + Globalink Research Internship**

**Non-local internships + International Exchange Programme**

**Local Internships(project-based) + Non-local Internships(placement-based)**

**Student-initiated Non-local Internships + Global Citizenship at Home**



Faculty of  
**Social Sciences**  
The University of Hong Kong  
香港大學社會科學學院





# How to plan among the SIGC options?

Experiential V.S. Regular classroom learning? Term-time V.S. Summer term?

Your interests, passions, & goals (careers?) personal exposure? Career development?

Adventurous spirit, extending the horizon

People-skills or relatedness

The pragmatic e.g., time, other courses or program requirements

Your GPA and major(s) (ease of credit-transfer)

Resources available (e.g., financial circumstances) or special needs (e.g., personal health)

Your year of study





# Application Timeline for 2021-2022

Programmes	Application Period (tentative)
HKU+Geneva (BSocSc + MA)	by October 29, 2020
Student-initiated Internship in Summer 2021	August 3 – November 6 (noon), 2020
HKU Worldwide Student Exchange Programme 2021-2022	October 5 – December 18, 2020
FOSS Faculty-level Exchange Programme 2021-2022	October 12 – December 17, 2020
Local & Non-local internships in Summer 2021	January 18 (6pm) – January 27 (noon), 2021
Local Internships in Term-time 2021-2022	June 2021
Globalink Research Internship (GRI)	June 2021



global  
Citizenship

12 credits

Social  
Innovation

12 credits

## Average expenses provided by students

Location	Airfare	Accommodation	Food	Total
Canada	HKD 10,000	HKD 12,000	HKD 8,000	HKD 30,000
China	HKD 2,638	HKD 9,823	HKD 4,515	HKD 16,977
Europe	HKD 12,000	HKD 6,000	HKD 7,000	HKD 25,000
South Africa	HKD 7,250	HKD 4,500	HKD 5,000	HKD 16,750
Sri Lanka	HKD 3,500	HKD 3,500	HKD 3,000	HKD 10,000
Korea / Japan	HKD 5,755	HKD 14,000	HKD 6,500	HKD 26,255
U.S.A.	HKD 10,000	HKD 28,000	HKD 14,500	HKD 52,500
Vietnam	HKD 2,800	HKD 4,000	HKD 4,000	HKD 10,800
New Zealand	HKD 8,000	HKD 6,000	HKD 5,000	HKD 19,000

### Remarks

*There are limited number of merit-based scholarships and need-based bursaries available for students participating in overseas experiential learning activities.*



Faculty of  
**Social Sciences**  
The University of Hong Kong  
香港大學社會科學學院







## Students' Sharing





Faculty of  
**Social Sciences**  
The University of Hong Kong  
香港大學社會科學學院

社  
科  
人  
Socien**t**ist