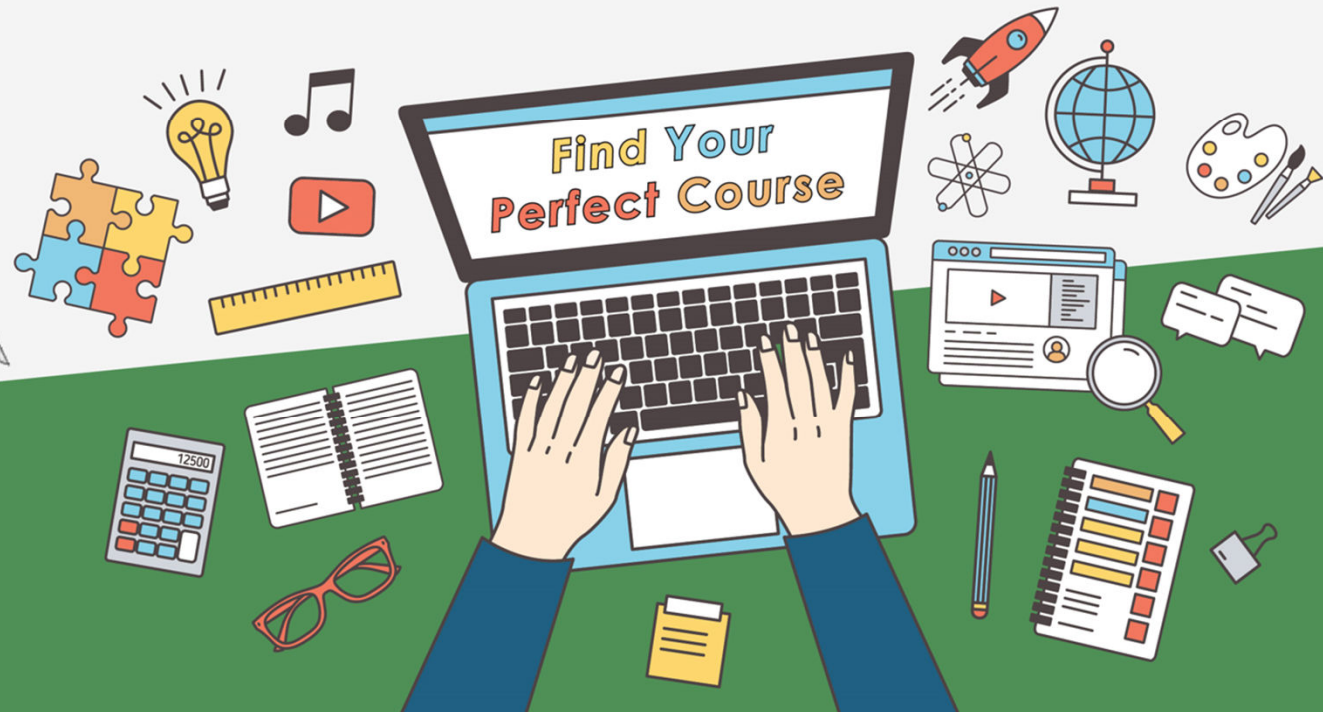


# Online Talk on Course Selection

## Bachelor of Social Sciences



Faculty of  
**Social Sciences**  
The University of Hong Kong  
香港大學社會科學學院

社  
科  
人  
Scientist

# Online Talk on Course Selection

**Date: August 15, 2023 (Tuesday)**

**Time: 9:30am to 10:30am**

## Rundown:

1. Welcoming Speech by Dr Chan Kwan Nok
2. Information about Course Selection
3. Graduation Requirements and First Major Declaration
4. Academic Advising and upcoming event(s)
5. Important Reminders
6. Student Sharing (Course Registration Demonstration)
7. Q&A

# When is the course selection period (2023–24)?

## Course Selection Period

From 10:00 am, August 17 (Thursday) to 4:00 pm, August 24 (Thursday)

## Link

SIS (Student Information System)



# How to enroll HKU courses?

1. **Enrollment** > **Enrollment Add Classes**
2. Select the appropriate term and courses to create **Temporary Course List**
3. Click “**Finish enrolling**” to confirm your selection (To be done during course selection period)
4. Check the results of your enrollment at “**View results**” page

[Link](#)

[Manual](#)



# What courses should be chosen in Year 1?

1. Common Core, Core University English (CUE)
2. Introductory course (**For your first major**)
3. Pre-requisites

	Components	Course Level*	No. of credits
A.	University Requirements		
i.	Core University English course	Introductory	6
ii.	English in the Discipline course	Advanced	6
iii.	Chinese Enhancement course	Introductory	6
iv.	Common Core courses	Introductory	36
v.	Non-credit bearing course(s) as required	--	--
B.	First Major		
i.	Introductory course	Introductory	6-12
ii.	Pre-requisites	Introductory	12
iii.	Advanced courses	Advanced	42-48
iv.	Capstone requirement	Advanced	6-12
v.	Social Innovation and Global Citizenship	Advanced	24
C.	Free electives / other major / minor	Advanced/Introductory	90
		Total:	240

← CAES1000

← Courses start with CCXX

Useful Links (on <http://www.socsc.hku.hk/>):  
**Regulations and Syllabuses; Recommended Study Pathway**

# List of Compulsory Courses

First Major	Compulsory Introductory Courses	Compulsory Advanced Courses
China Studies (Social Sciences Stream)	SINO1003; and Two pre-requisites courses from other disciplines	SINO2003; <u>and</u> One of the following courses: GEOG2120; POLI2104; SOCI2023; SOWK2143
Geography	One of the following courses: GEOG1002; GEOG1003; GEOG1005; GEOG1012; GEOG1016; GEOG1017; GEOG1020; GEOG1021; GEOG1022; and Two pre-requisites courses from other disciplines	One (preferably two) of the following courses: GEOG2090; GEOG2120; GEOG2130; GEOG2137; GEOG2141; GEOG2145; GEOG2146; GEOG2147; GEOG2156; GEOG2157
Politics and Public Administration	POLI1003; and Two pre-requisites courses from other disciplines	POLI2104; <u>and</u> Two of the following courses: POLI2105; POLI2106; POLI2107; POLI2108
Social Policy and Social Development	SOWK1015; and Two pre-requisites courses from other disciplines	SOWK2141; SOWK2142; SOWK2143; SOWK2144
Sociology	One of the following courses: SOCI1001; SOCI1003; SOCI1004; and Two pre-requisites courses from other disciplines	SOCI2001; SOCI2030; SOCI3024; SOCI3042

## Other requirements?

Check [Regulations and Syllabuses](#) (2023-24 cohort)

# When and how I should choose my first major?

**When?** Semester 1 of Year 2

**How?** SIS (Student Information System)

- **Enrollment** › **Declare Major/Minor/Special**
- Select and click **Submit**

[Useful Link](#)

[Manual](#)

# Regulations

## 1. Late Add/drop

- Add/drop within the course selection period

## 2. Study Load

- 24-36 credits in a semester, 48-72 credits in an academic year

## 3. Introductory courses

- **less than** 108 credits of introductory courses throughout the study
- No introductory course in final year

Special Request:

[http://www.socsc.hku.hk/students/ug/pdf/forms/Special\\_Approval\\_form.pdf](http://www.socsc.hku.hk/students/ug/pdf/forms/Special_Approval_form.pdf)



# Academic Advising



## Faculty Academic Adviser (FAA)

- FAA is a current teacher from the Faculty who advises you on study-related matters, and who you can approach whenever you need academic advice

## Faculty Student Adviser (FSA)

- FSA assists you in adjusting to the university studies as well as registration and course enrollment process

# Academic Advising

Sign up for Faculty Academic Adviser (FAA)  
and Faculty Student Adviser (FSA)

## Period

From 2:00 pm, August 14 (Monday) to 10:00 am, August 21 (Monday)

## Platform

<https://aas.hku.hk/faa-signup/>

# More Orientation Events?

## Faculty Induction Talk

**Date:** August 16, 2023 (Wednesday)

**Time:** 2:00pm to 4:30pm

### Rundown:

#### Faculty Session

- Faculty and Department Introduction
- Academic Information
- Common Core Curriculum and English Support Service
- Student Affairs and Equal Opportunities
- Introduction of Social Sciences Society

#### Breakout session for Individual Programmes



*More on FOSS First-year Experience*



# Important Reminders

## 1. Course Registration

✓ August 17 (10 am) – August 24 (4 pm)

## 2. Contact

✓ ITS (SIS): 3917-0123 / ithelp@hku.hk

✓ Faculty: 3917-1212 / socscug@hku.hk

## 3. Faculty Induction Talk

✓ August 16, 2023 (Tomorrow) | Lecture Hall II



# Student Sharing

社  
科  
人

Socien**t**ist