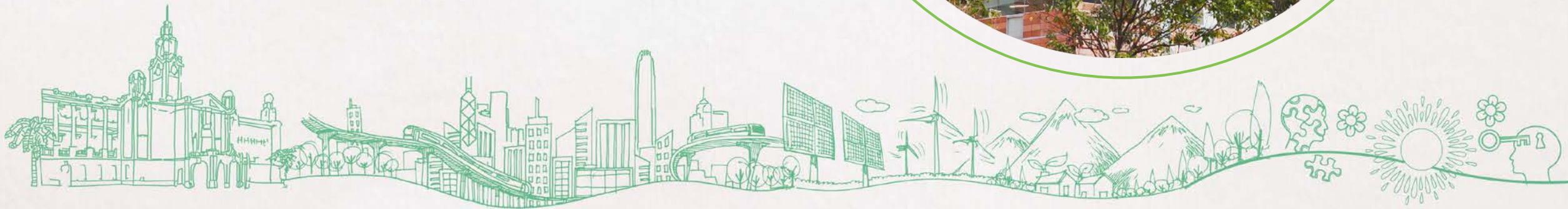




Faculty of
Social Sciences
The University of Hong Kong

香港大學社會科學學院



Background of Faculty of Social Sciences



100+ professoriate staff



Students:

- ◆ 1,700 UG
- ◆ 300 visiting/exchange
- ◆ 1,400 TPG
- ◆ 240 RPG



Faculty of
Social Sciences
The University of Hong Kong

香港大學社會科學學院

社
科
人
Scientist



DEPARTMENTS & RANKING



Faculty of
Social Sciences
The University of Hong Kong
香港大學社會科學學院

社
科
人
Socienlist

Departments



(1st in HK)

Social Sciences and Management



2nd

12th



Geography

4th

25th



Journalism and Media
Studies Centre

4th

31st



Politics and Public
Administration

2nd

31st



Psychology

4th

20th



Social Policy &
Social Development

4th

28th



Sociology

3rd

21st

Asia

World

QS World University Rankings 2020

Ranking



Important Notes to New Students

- [Notes for New Students](#)
- [Calendar of major events in 2020-2021](#)
- Useful links



SIGC

24 CREDITS



OR

OR



OR



OR



OR



OR



OR



**for students who will undertake
internship in UK universities*

global
Citizenship
12 credits

Internship Community Partners



Total No. of CPs > 150

**global
Citizenship**
12 credits

Exchange Partners



First Year Experience

October – November 2020

Briefing on Social Innovation and Global Citizenship

January 2021

Internship Week

Confirmed schedule will be announced after the start of the semester

Teaching and Learning arrangements in Semester 1, 2020-2021

Dual mode of online and face-to-face teaching

- All courses will be conducted online
- A few exceptions requiring hands-on engagement, such as lab-related courses, fieldwork placements, internships, etc.
- Face-to-face classes will be offered when the public health situation turns safe

Teaching and Learning arrangements in Semester 1, 2020-2021

Arrangements from September 1 to 21, 2020 (First three weeks)

- Classes will be delivered online only
- Arrangements of the remainder of the semester will depend on the public health situation, details will be announced in due course
- Stay tuned to the updates from the University and the Faculty

e-Learning

e-Learning platforms

- Moodle – the most commonly used platform by HKU teachers
- Supplemented with other video channels, such as Panopto, YouTube, Zoom, etc.
- Pay special attention to the notices and announcements from the course teachers on how to access to the course materials online

e-Learning

Online assessments in Semester 1

- All final assessments will take place online
- Platforms for online assessments: Moodle and/or HKU Online Examination System (OLEX)
- Course teachers will announce the details of assessments after the start of each course

e-Learning

Resources

- Moodle: <http://moodle-support.hku.hk/student/moodle>
- OLEX: <https://www.its.hku.hk/olex>
- Central IT Service: <https://www.its.hku.hk/services/overview>
- Contact ITS eLearning support team at eLearningteam@hku.hk or +852 3917 0123



Academic Honesty

Plagiarism is defined as “the unacknowledged use, as one’s own, of work of another person, whether or not such work has been published”. It constitutes **academic theft** – the offender has ‘**stolen**’ some intellectual property and presented it as his or her own’s.

Students should develop a good practice of **citation**. Assessments submitted in any form should properly **acknowledge all sources referenced** through citation to **give credits** to the quotes and/or ideas originated from another source.



Academic Honesty

Plagiarism speaks to a person's **integrity** and **honesty**, stifles **creativity** and **originality**, and defeats the **fundamental purpose of education**.

In HKU, Plagiarism is a **serious disciplinary offence**. Any student who commits the offence is liable to disciplinary action, such as a reprimand, fine, withdrawal, suspension, and even expulsion from the University.

Academic Honesty

Resources

- HKU Teaching and Learning: [What is Plagiarism?](#)
- HKU Libraries: [ILT01 Information Literacy Training: Academic Honesty](#)
- HKU Libraries: [Citation Style and Writing Guides](#)
- CAES: [English services available to students](#)
- HKU: [Policy on Student Plagiarism](#) (Portal login required)

Attendance and Leave of absence

Attendance

Students should attend all lectures, laboratory classes, tutorials, seminars and fieldwork required for each course.

Absent from classes without sound justifications and leave records may result in mark deduction on assessments, or even course failure.

Attendance and Leave of absence

Medical leave

Students who cannot attend classes because of illness should inform the Faculty Office in writing as soon as possible. Medical certificate is required for the leave application.

- If longer leave is required (i.e. one semester or one academic year), application should be submitted **prior to the start of the semester.**

Attendance and Leave of absence

Exchange leave

Students who will go abroad for exchange studies should submit their applications for exchange leave and credit transfer **prior to departure**. No **retrospective** application will be considered.

Attendance and Leave of absence

Personal leave

Students who plan to take one semester or one academic year off for personal engagement could also apply for personal leave. Application with sound justifications should be submitted to the Faculty Office **prior to the start of the semester.**

Students should also pay special attention to the **maximum registration period** prescribed in the respective degree regulations.

Academic Advising

Faculty Academic Adviser (FAA)

- FAA is a current teacher from the Faculty who advises you on study-related matters
- Approach your FAA whenever you need academic advice
- Consult your FAA during the consultation hour or contact her/him by email to make an appointment

Academic Advising

Sign up for Faculty Academic Adviser (FAA)

Period

From 10:00 am, August 18 (Tuesday) to 4:00 pm, August 24 (Monday)

Platform

<https://ugaa.hku.hk/signup-faa.php>

You will be randomly assigned a FAA if you do not sign up by the deadline.

Academic Advising

Faculty Student Adviser (FSA)

- You will be assigned in a group of new students with 3 to 4 FSAs in each group
- FSAs will assist you in adjusting to the university studies as well as registration and course enrollment process
- Meet with your FSAs and other fellow students in Zoom breakout rooms after the Faculty session from 10:30 to 11:00am
- Meeting links have been sent out to your HKU email account

Breakout session for individual programmes

11:00 – 11:30am

Bachelor of Arts and Sciences

Meeting ID: 916 3256 9093

Password: SS2020it

Bachelor of Journalism

Meeting ID: 979 5395 6222

Password: SS2020it

Bachelor of Social Sciences and

Bachelor of Education & Bachelor of Social Sciences

Meeting ID: 953 5968 4191

Password: SS2020it

Bachelor of Social Work

Meeting ID: 981 3860 4825

Password: SS2020it

Important Reminders



1. Website: www.socsc.hku.hk
2. E-mail: use HKU email account
*(**No message will be sent to your personal e-mail account)*
3. Pay attention to the updates on Teaching and Learning arrangements after the start of the semester
4. Enquires: 3917-1212 / socscug@hku.hk

Thank you.



Faculty of
Social Sciences
The University of Hong Kong
香港大學社會科學學院

社
科
人
Socien^{ist}