



**A special year,
a special welcome!**

Prof Amy CHOW

BSW Programme Director

Dr Johnston CHEUNG

BSW Deputy Director

What are you expecting in these 4 years?

Year 4: Advanced Application & Specialization
(Integration in the real world)

Year 3: Consolidation and Application
(Application in simulated or protected environment)

Year 2: Social Work-Related Basic Introduction
(Utilization of Social Work Knowledge, Skills and Values theoretically)

Year 1: General Introduction
(Understanding of Knowledge, Skills and Values)



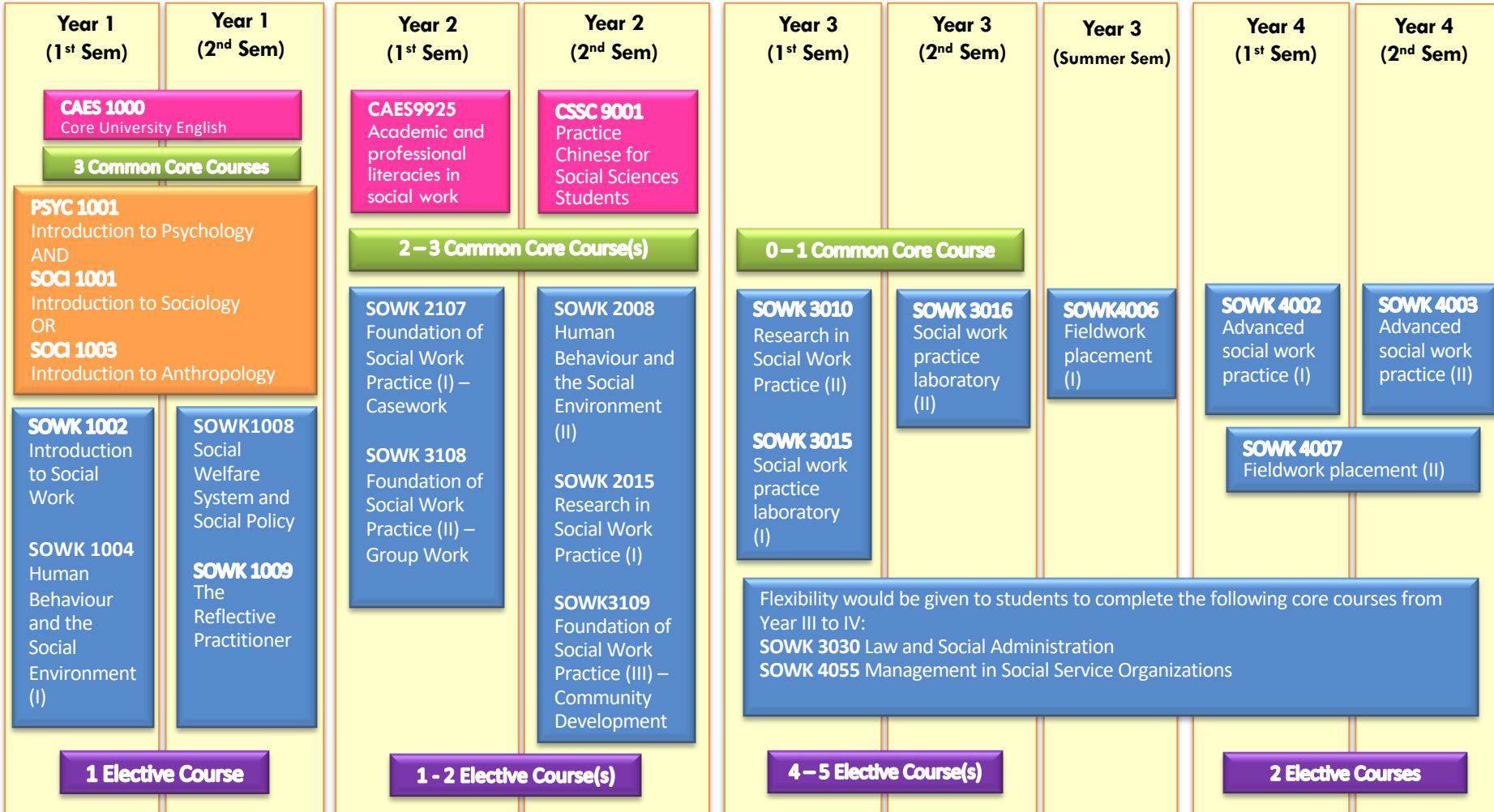
Sequence of BSW core courses

Year 1 (Foundation)

Year 2 (Consolidation + Specialization + Integration + Application)

Year 3 (Consolidation + Specialization + Integration + Application)

Year 4 (Specialization + Integration + Application)



Compulsory University Requirements

Requirements for single degrees	Credits	Year of study
Six 6-credits Common Core Courses (CCCs)	36	normally in 1 st – 3 rd years
CAES1000 General University English	6	normally in 1 st year
CAES9925 Academic & professional literacies in social work	6	normally in 2 nd /3 rd year
CSSC9001 Practical Chinese for social sciences students OR CUND9002 Practical Chinese and HK Society OR CUND9003 Cantonese for non-Cantonese speaking students	6	normally in 2 nd year
	54	

Compulsory Faculty Required Introductory Courses

Course	Credits	Year of study
PSYC1001. Introduction to psychology	6	normally in 1 st year
SOCI1001. /SOCI1003. Introduction to sociology/ Introduction to anthropology	6	normally in 1 st year
	12	

Compulsory Disciplinary Requirements

Year	Course	Credits
Year 1	SOWK1002. Introduction to social work	6
	SOWK1004. Human behaviour and the social environment (I)	6
	SOWK1008. Social welfare system and social policy	6
	SOWK1009. The reflective practitioner	6
Year 2	SOWK2008. Human behaviour and the social environment (II)	6
	SOWK2015. Research in social work practice I	6
	SOWK2107. Foundation of social work practice I	6
	SOWK3108. Foundation of social work practice II	6
	SOWK3109. Foundation of social work practice III	6
Year 3	SOWK3010. Research in social work practice II	6
	SOWK3015. Social work practice laboratory I	6
	SOWK3016. Social work practice laboratory II: Field attachment	6
	SOWK3030. Law and social administration*	6
Year 3 Summer	SOWK4006. Field work placement I	15
Year 4	SOWK4002. Advanced social work practice I	6
	SOWK4003. Advanced social work practice II	6
	SOWK4007. Field work placement II	15
	SOWK4055. Management in human service organizations*	6
Normally Year 2-4	Two 6-credits Disciplinary Electives	12
		138

**Flexibility would be given to students to complete these core courses from Year 3 to 4.*

**University
Compulsory**
54 Credits



**Faculty
Compulsory**
12 Credits



**Disciplinary
Compulsory**
138 Credits



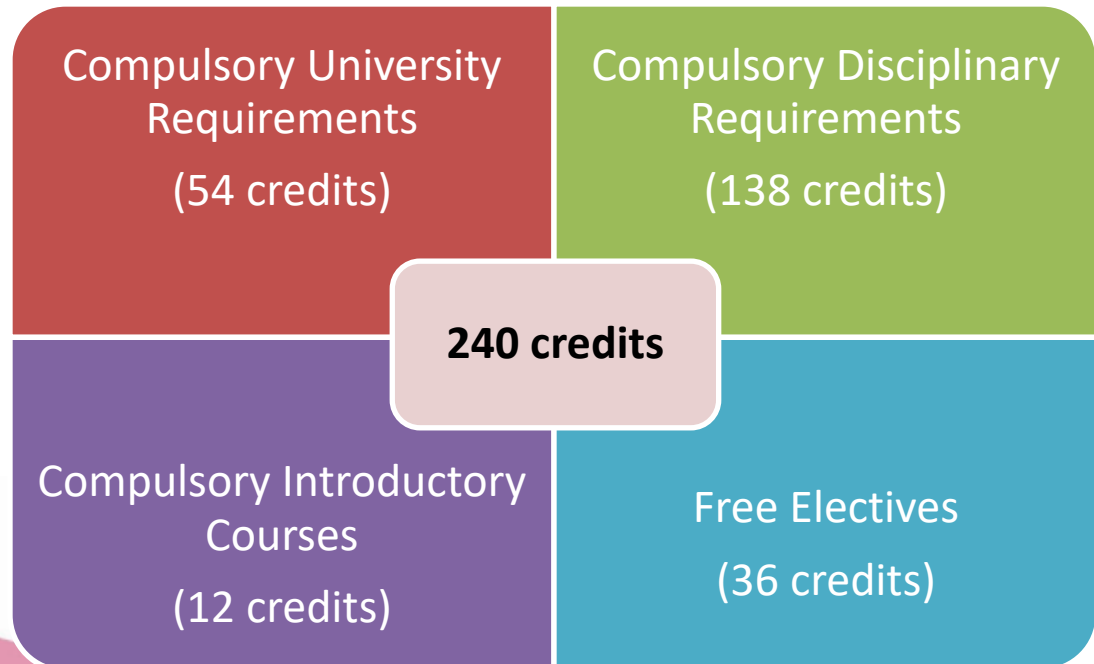
204 Credits

**36 credits
left**



Free Electives

- 36-credits of free electives, including at least 24 credits at advanced level, offered by the SWSA Department or other Departments
- May opt for a **minor (36 credits of courses) offered by the Faculty of Social Sciences or other Faculties**



Credit System

- **Credit Load**
 - minimum: 24 credits/semester (except final semester of study)
 - maximum: 36 credits/semester (i.e. 72 credits/ academic year)
- **Credit Under / Over Load**
 - special permission of the Faculty Board is required
 - students applying for credit overloading should be fully aware of the possible consequences to take additional credits



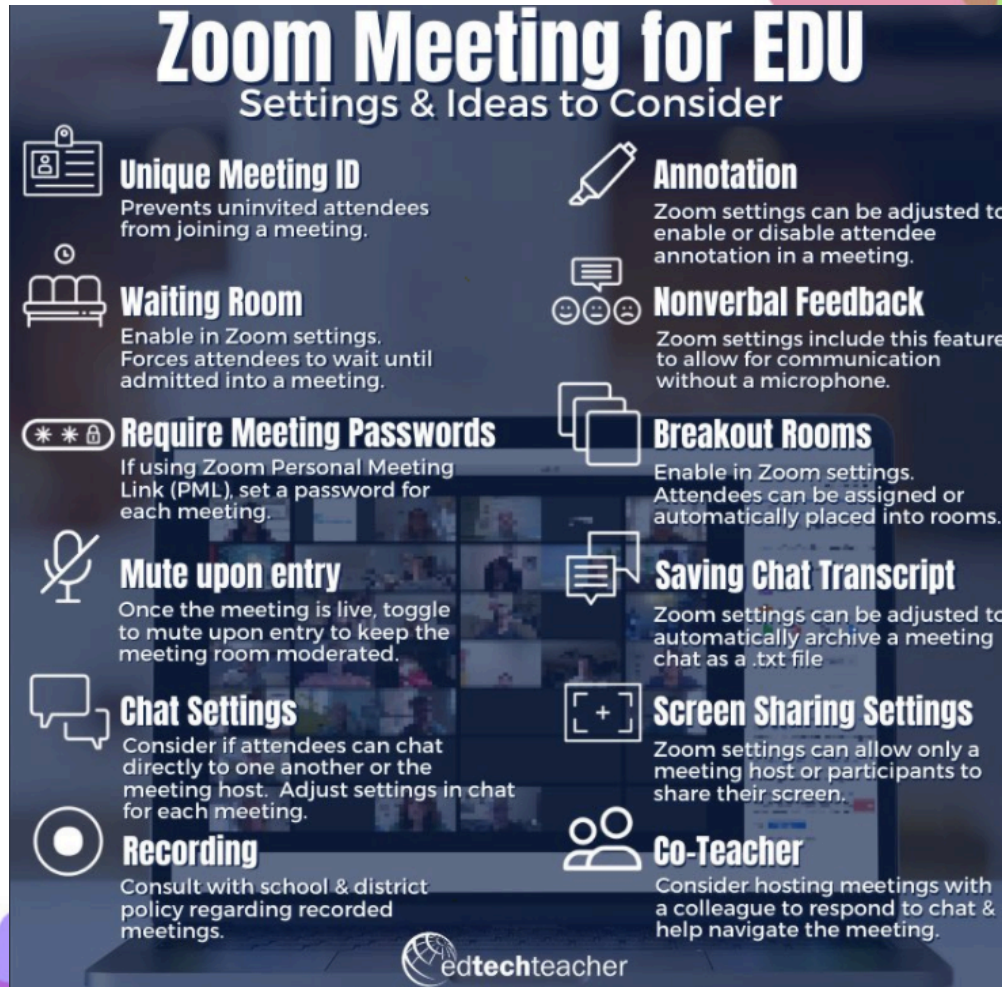
Special Arrangement

- **Sept 1 – 21, 2020**
 - all courses will be online teaching through zoom
- **Sept 22 onwards**
 - Will be announced on Sept 1, 2020



Zoom Etiquette

Zoom Meeting for EDU Settings & Ideas to Consider



Unique Meeting ID
Prevents uninvited attendees from joining a meeting.

Waiting Room
Enable in Zoom settings. Forces attendees to wait until admitted into a meeting.

Require Meeting Passwords
If using Zoom Personal Meeting Link (PML), set a password for each meeting.

Mute upon entry
Once the meeting is live, toggle to mute upon entry to keep the meeting room moderated.

Chat Settings
Consider if attendees can chat directly to one another or the meeting host. Adjust settings in chat for each meeting.

Recording
Consult with school & district policy regarding recorded meetings.

Annotation
Zoom settings can be adjusted to enable or disable attendee annotation in a meeting.

Nonverbal Feedback
Zoom settings include this feature to allow for communication without a microphone.

Breakout Rooms
Enable in Zoom settings. Attendees can be assigned or automatically placed into rooms.

Saving Chat Transcript
Zoom settings can be adjusted to automatically archive a meeting chat as a .txt file.

Screen Sharing Settings
Zoom settings can allow only a meeting host or participants to share their screen.

Co-Teacher
Consider hosting meetings with a colleague to respond to chat & help navigate the meeting.

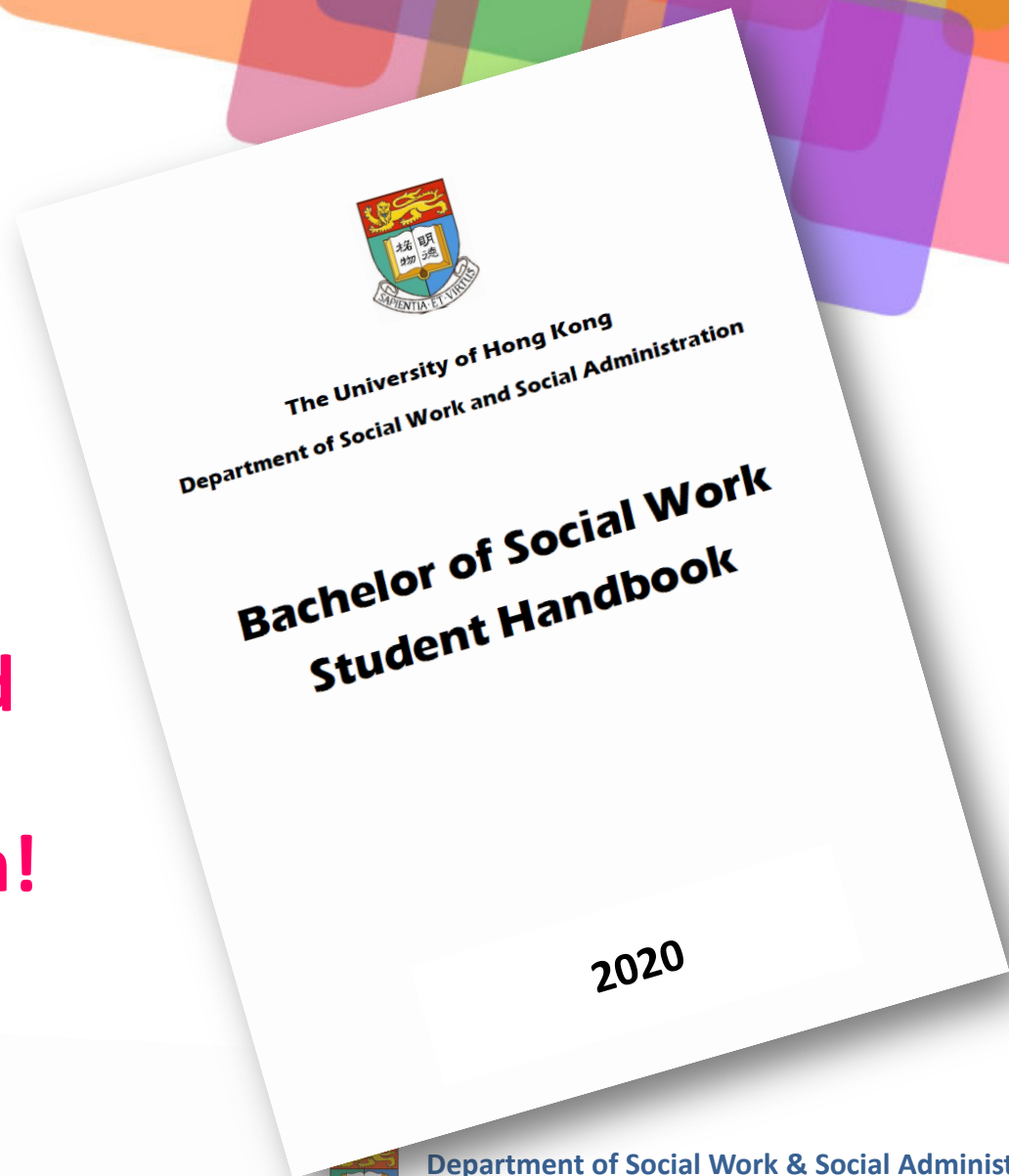
edtechteacher

<https://docs.google.com/document/d/1fN7sbjONi3RLq1kxphi-n2JX4yIBNRuPFTmCinyti-o/preview>



Department of Social Work & Social Administration,
The University of Hong Kong

Please refer to the Student Handbook for detailed regulations and syllabus. Soft and hard copies will be provided soon!



BSW Team Key-players



Academic Advisor & Personal Tutor

- **Academic Advisor**

- each freshmen is assigned an academic advisor
- meet with advisor at least once every semester

- **Personal Tutor**

- usually members of Dept's teaching staff
- each Yr 2 – 4 students is assigned an personal tutor
- 1st meeting to be initiated by personal tutors



Supportive Services in HKU

(1) Financial Assistance

- **Financial Aids (need-based)**
 - Government Scheme (e.g. Tertiary Student Scheme, Non-means-tested Loan Scheme etc.)
 - University Financial Assistance (e.g Travel & accommodation loan)
 - First-in-the-Family Education Fund
- **Educational Funding Sources**
- **HKU Scholarships**

Details at CEDARS website <http://cedars.hku.hk/financial.php>

More details of scholarships & prizes can be found at
<http://www.scholarships.hku.hk/>



(2) Personal Development & Counselling






- Student Development & Counselling Centre
under CEDARS (<http://cedars.hku.hk/showext.php?id=cpe>)

CEDARS-CoPE

Change the font colors and size on this site: **C C C C** A A A

Home What We Do What is CEDARS-CoPE? Contact Sitemap

What do you want to know?

- 
Counselling and Psychological Services
- 
Person Enrichment
- 
SEN/Accessibility Support
- 
Diversity and Social Inclusion
- 
Peer Support Network
- More.



(3) Career Education

Service from CEDARS

career training workshops, self-assessment tools, recruitment talks, internship opportunities etc.

(<http://cedars.hku.hk/showext.php?id=cpe>)

Service from Department

- interview workshops
- recruitment talks by local, mainland and overseas NGOs



(3) Sexual Harassment

Legal Liability

The Sex Discrimination Ordinance provides that sexual harassment in the education field is unlawful. Therefore, committing sexual harassment will incur legal liability on the harasser.

How to Deal with Sexual Harassment?

Say "No"

Tell the harasser that the behaviour is unwelcome and must be stopped immediately. DON'T ignore the behaviour as it might be taken as tacit consent.

Keep a record

Write down the details of the events e.g. dates, times, location & witnesses, as well as your reactions and feelings.

Seek advice

Consult your supervisor, head of department, Equal Opportunity Adviser, student counsellor, hall warden, the Equal Opportunity Unit or any other supervisory personnel with whom you feel comfortable.

Complaint

If mediation and other informal measures could not resolve your problem, you can formally lodge a written complaint with the Vice-Chancellor. The latter will refer the complaint to the Equal Opportunity Officer who will then follow the relevant procedures to investigate the case.

COUNSELLING & SUPPORT SERVICES ON CAMPUS

For information

The University's policy and procedures for sexual harassment can be viewed at the website of the Equal Opportunity Unit: <http://www.eounit.hku.hk>

Individual Counselling, Consultation and Support Services

The CADERS provides a wide range of support and resources for students to have a safe and diverse student life.

Tel: 3917 8388

E-mail: cedars-cope@hku.hk

For enquiries and lodging a complaint

Contact the Equal Opportunity Unit at

Tel: 3917 5115

E-mail: eounit@hku.hk.

ENQUIRIES OUTSIDE CAMPUS

Enquiries and complaints can also be directed to the Hong Kong Equal Opportunities Commission at

Tel: 2511 8211



(5) Assistance from CAES

Centre for Applied English Studies (CAES)

- virtual English (Zone R, Student Advisory Services Zone, 2/F, Chi Wah Learning Commons):
 - Group discussions and workshops
 - Writing support sessions
 - Speaking support workshops
 - CEDARS/CAES student peer tutors
- online learning resources:
 - Vocabulary
 - Grammar
 - Presentation skills
 - IELTS preparation

Details at CAES homepage:

<http://caes.hku.hk/>



(6) Health Services

University Health Service (UHS)

provides primary medical and dental care

(<http://www.uhs.hku.hk>)



University Health Service 香港大學醫療保健處
The University of Hong Kong

[Web Appointment System](#)

Google™ Custom Search



[Home](#) [About UHS](#) [Our Services](#) [Appointment](#) [Medical Benefits](#) [Health Information](#) [Download Forms](#) [Links](#) [Contact Us](#)

« August 2014 »

S	M	T	W	T	F	S
					1	2
3	4	5	6	7	8	9
10	11	12	13	14	15	16
17	18	19	20	21	22	23
24	25	26	27	28	29	30
31						

News

[Read More](#)

Alert Response Level for Ebola Virus Disease Aug 21, 2014

Ebola Virus Disease Jul 31, 2014

Alert Response Level for MERS and AF Jun 13, 2014

Dengue Fever bulk mail May 28, 2014

Opening Hours

Mon - 8:40am - 5:00pm
Fri:
Sat: 8:25am - 12:45pm
Sunday & Public Holidays :
Closed

Appointment:

☎ 2549 4686 Medical
☎ 2859 2510 Dental
☎ 2859 2509 Physiotherapy

Programme

[Read More](#)

Occupational Health and Safety Apr 28-May 2, 2014

Food Fitness Jun 10-13, 2014



occurred
Alert Response Level
for **Ebola Virus Disease**
sudden forest
Outbreaks
leaving infected
fever
strain

**Middle East
Respiratory Syndrome**

Travel Health

**New Student Health
Orientation 2014**

(7) Facilities

<http://www.hku.hk/facilities/>

University Facilities



HKU Library



HKU Sports Centres

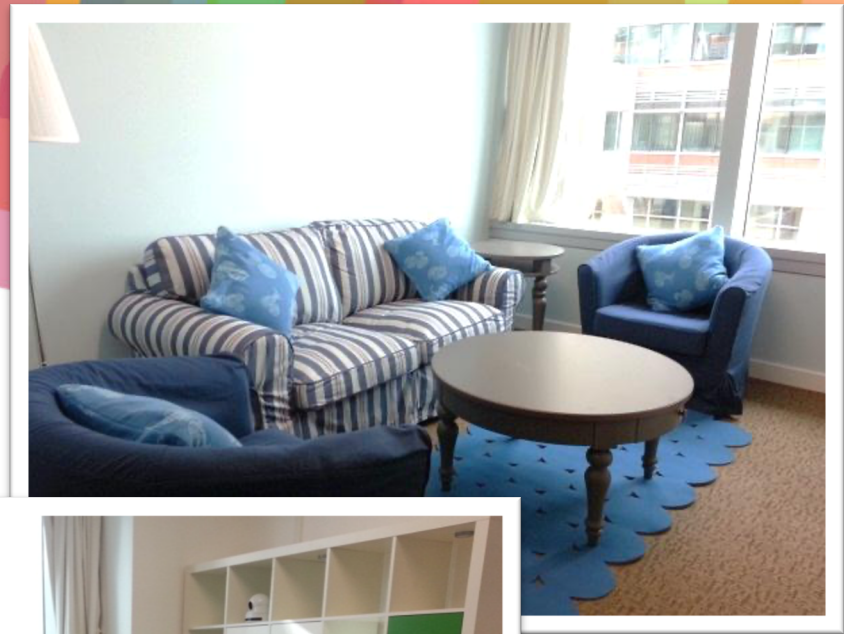
Chi Wah
Learning Commons



Department Facilities



**SWSA Society's Room
– CPD-5.09**



**Counselling Rooms – 4/F of
Jockey Club Tower**



We need your help to our BSW Programme!

1. **Participation in Online Student Intake Survey**
<https://survey2.socialwork.hku.hk/index.php/138132?lang=en>
2. **Participation in our INFORMATION DAY in 2 Nov, 2020**
3. **Participation in our JUPAS Interview Day which will be held in May/June 2021**



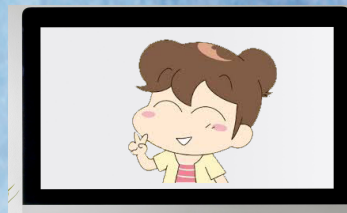
Promotion of the Society of Social Work and Social Administration



**SOCIAL WORK AND SOCIAL
ADMINISTRATION SOCIETY, SSS, HKUSU**

ONLINE ORIENTATION DAY

Owing to the spread of Coronavirus, face-to-face Orientation Series is cancelled. However, in order to help new members to be more familiar with school lives, SWSAS has considered to hold an Online Orientation Day .



Activity Info

Date: 28th August 2020 (Friday)

Time: 14:00-17:00

**Venue: Zoom link would be sent
through Whatsapp afterwards**

Registration:



**FOR ENQUIRIES, PLEASE CONTACT CHAN HIN CHING,
SARAH, INTERNAL VICE-CHAIRPERSON AND
HONORARY SECRETARY AT 63436820.**

Facebook: @SWSAS.SSS.HKUSU

Instagram: swsassshkusu



<http://www.hitech-dolphin.com/bottlenose-dolphin-pictures-2.html>



Safe and Fruitful Journey...



Department of Social Work & Social Administration,
The University of Hong Kong