

SPRING ISSUE 2018



www.socsc.hku.hk

# Socien**tist** 社

# 科人

*Celebrate*  
**50<sup>th</sup>**  
*Reunion*

Community  
Impact p.9-10

**RSP4** 

**Drug Policy in Hong Kong**



# Celebrate 50<sup>th</sup> Reunion

FEATURE STORY



The Faculty celebrated its half century impact on society at its 50<sup>th</sup> Anniversary Reunion Dinner held on December 4, 2017 at the Hong Kong Convention and Exhibition Centre. We were honoured to have our distinguished alumnus, the Honourable Mrs Carrie Lam, Chief Executive officiating the occasion. In her speech, Mrs Carrie Lam said, "[The Faculty] has nurtured and produced numerous public leaders for our community. I look to the faculty and the students of the Faculty of Social Sciences to be an advocate for inclusive growth." Over 1,300 guests, alumni, friends, students and staff members witnessed this warm reunion.

To celebrate the half century, the Faculty produced 50 videos highlighting some of its interdisciplinary, innovative and international endeavors which have created remarkable impacts on education, research, scholarship, leadership, and to the community as a whole.



**Please enjoy the Impact Stories at**  
[www.socsc.hku.hk/50/impact-stories](http://www.socsc.hku.hk/50/impact-stories)







In 1967, when we entered the newly founded Faculty of Social Sciences, there were only around one hundred undergraduates in our "Pioneer class." Twenty or so of us came together to attend the Reunion Dinner to celebrate the 50<sup>th</sup> Anniversary of the Pioneer Class. We were probably the few people that evening who could lay claim to have borne witness to the "birth" of the Faculty fifty years ago.

The day before the Reunion Dinner, we visited the Faculty as part of the alumni homecoming tour. It was quite clear that the Faculty has come a long way since the very early days of cramped quarters at Loke Yew Hall. They say, perhaps jokingly, that I don't belong to any of the departments there because I studied economics. To that, I proclaim I hold a BSocSc degree; I would always feel proud as a graduate of the Faculty of Social Sciences.

**Mr Dennis Yau Tat-wang (邱達宏先生)**  
BSocSc (1970)

The Reunion Dinner gave me an opportunity to meet some of the Geography graduates from four consecutive years: Mr Henry Wai (1972), myself (1973), Dr Albert Yeung (1974), Professor Jim Chi Yung (1975), Mr Edward Yau (1981) and many others. This is not a coincident.

**Dr Wong Fook Yee (王福義博士)**  
BA Geography (1973), MSocSc (1984), PhD (1997)



It is always good to meet up with classmates from different years! We are looking forward to the 60<sup>th</sup> Anniversary.

**Mr Charlton Mui Sa-ching (梅守正先生)**  
BSocSc (1981)

We were once co-members of Social Sciences Society 2013. We are so pleased to have attended the Reunion Dinner. We felt warm going back home. We made an interesting photo that resembled the one we took fifteen years ago.

**Mr Baron Chan Shun-ching (陳純青先生)**  
BSocSc (2005), MSocSc (2009)





This reunion dinner is a defining moment for the Faculty of Social Sciences and all of us. We pardon ourselves, at least tonight, for our narcissism, conceit and self-indulgence, talking about the good old days and praising each other's works, accomplishments and impacts. We are neither made by history nor makers of history. We proclaim ourselves, as indeed we are, the social history of Hong Kong.

**Mr Ayo Chan Yi-nok (陳一譔先生)**  
BSocSc (2011)



HKU Social Sciences means a lot to me. It's a great partner to have for my work at Facebook; it's my alma mater, and it always feels like home. I want to particularly thank Professor Wai-Fung Lam to invite Facebook to contribute to our Reunion Dinner. The 50<sup>th</sup> anniversary is a milestone, and let's work together for the next 50 years and more centuries to come for the bigger success of HKU.

**Mr George Chen Shu (陳澍先生)**  
Head of Public Policy  
Hong Kong & Taiwan, Facebook  
MPA (2012), DPA (Student)



It was a great honour to attend the Reunion Dinner to celebrate the Golden Jubilee of the Faculty of Social Sciences. It was also a pleasure to meet alumni who were past executive committee members of Social Sciences Society, HKUSU.

**Miss Lilian Lo Wing-yan (勞穎茵小姐)**  
Chairman, Social Sciences Society, HKUSU  
Session 2018



That was a wonderful night with marvellous performances and inspiring speeches. Everyone had a great evening with friends in the big family of HKU Social Sciences. It made me feel proud of being a 'Socienstist'.

**Mr Rico Choy Hei-yat (蔡熹逸先生)**  
BSocSc IV (Psychology and Counselling)



It is my great honour to serve as a student helper at the 50<sup>th</sup> reunion dinner. I felt encouraged by all the distinguished Faculty alumni. They set the example for me, a new Social Sciences student, to study hard and work hard for a better world.

**Miss Maggie Rongzhen Ma (馬榮真小姐)**  
PhD Candidate (Politics and Public Administration)



As the old saying goes, "Fate brings people together no matter how far they may be." It was a great pleasure and honor to participate in this memorable event. I sincerely hope that we will meet again at the next reunion dinner.

**Miss Temmy Lo Lee-ting (盧利亭小姐)**  
MPhil I









## ENDOWED PROFESSORSHIPS

### **Karen Lo Eugene Chuang Professorship in Diversity and Equity** **Professor Terry Au Kit-fong (區潔芳教授)**

Professor Terry Au Kit-fong is the Chair Professor of Developmental Psychology and the Karen Lo Eugene Chuang Professor in Diversity and Equity at the Department of Psychology at HKU. With her experience in cross-disciplinary human resources, Professor Au was appointed Vice-President and Pro-Vice-Chancellor (Academic Staffing and Resources) in January 2016 and is spearheading efforts to promote gender diversity and equity.



For details:

[www.socsc.hku.hk/professorships/ta](http://www.socsc.hku.hk/professorships/ta)



### **Eugene Chuang Professorship in Developmental and Educational Psychology** **Professor Connie Ho Suk-han (何淑嫻教授)**

Professor Connie Ho Suk-han joined the Department of Psychology at HKU at 2000. She holds the Eugene Chuang Professorship in Developmental and Educational Psychology. Her research focuses mainly on the cognitive and genetic aspects of literacy learning and developmental dyslexia in Chinese people.



For details:

[www.socsc.hku.hk/professorships/ch](http://www.socsc.hku.hk/professorships/ch)





NEW  
LEADER

## Professor Becky Loo

The Department of Geography and Geology, established in 1954 and renamed the Department of Geography in 2000, is one of the oldest departments at any university in the territory. The Department will continue to cherish its fine traditions as it grows and becomes more widely known nationally and internationally. As the first female Head of Department, I am committed to adopting a truly inclusive approach to engage all colleagues who are eager to pursue research excellence, quality teaching, meaningful knowledge exchange, and honourable service. The fine "place" tradition of geography sees different locations as spatial platforms where different physical forces and human factors interact to make the Earth a home for human beings. I will strive to maintain HKU Geography as a comprehensive geography department with different sub-fields mutually supporting each other. In the twenty-first century, our discipline is ever more relevant and important. Geography is central to the formation of sustainable and liveable cities that delicately balance the environment, the economy, and society with the wise use and support of information and communication technologies. With a strong team of colleagues, the Department of Geography is ready to make useful contributions to the Faculty of Social Sciences and be actively engaged in various international, innovative, and interdisciplinary initiatives of the University to create a positive impact on nature and society.

**Professor Becky Loo Pui-ying** (盧佩瑩教授)  
Head, Department of Geography





# FACULTY AWARDS



## **Weapons of the Powerful: Authoritarian Elite Competition and Politicized Anticorruption in China**, *Comparative Political Studies*, Volume 50, Issue 9, page(s): 1186-1220.

Nondemocratic countries without accountable institutions are often assumed to be weak at corruption controls. Nevertheless, some authoritarian governments periodically wage wars on it. For example, the autocratic regimes in Rwanda and South Korea launched several attempts to eradicate corruption. China is another notable case of periodic anti-corruption campaigns. Why and when do authoritarian regimes crack down on corruption?

In this article, Dr Zhu Jiangnan, together with her co-author Dr Zhang Dong, argue that just as partisan competition in democracies tends to politicise corruption, authoritarian leaders may exploit anti-corruption campaigns to target rival supporters during internal power struggles for consolidating their power base. The authors apply this theoretical framework to provincial leadership turnover in China and test it using an anticorruption data set of the number of officials' at/above the county/division levels investigated annually by provincial procuratorates between 1996 and 2012. They find that intra-elite power competition, captured by the informal power configuration of government incumbents and their predecessors, can increase investigations of corrupt senior officials by up to 20%. The incentive to politicise anti-corruption is the strongest when outgoing party secretaries and their incumbents belong to competing strong factions because intra-elite power competition tends to be the most intense. The intensity of anticorruption propaganda exhibits a similar pattern.

This work provides a timely explanation for the political logic of anti-corruption campaigns, an important issue in contemporary China. It is among the first to theorise and test the causal links that underlie the politicisation of anticorruption in authoritarian regimes. The authors advance the existing studies in several directions. First, the extant scholarship focuses on formal institutions curbing corruption. This work investigates the informal political networks' influence and politicians' concerns with political survival on anticorruption endeavours in authoritarian regimes. Second, while the role of elite unity and power sharing in sustaining authoritarianism is usually emphasized, the authors' findings suggest that elite cleavage may deter unbridled corruption. Finally, existing literature offers explanations for why authoritarian leaders tolerate corruption but provide limited insights into the conditions under which they choose to prosecute those involved. This work's theoretical framework explains both tolerance and prosecution. However, corruption investigations induced by intra-elite competition are undeniably biased, arbitrary, and selective. Systemic eradication of corruption depends on independent, transparent, and effective institutions.

This research output has an Altmetric Attention Score of 28. It is in the top 5% of all research outputs scored by Altmetric, indicating very high attention compared to outputs of the same age (above 92 percentile).

**Dr Zhu Jiangnan (朱江南博士)**

Department of Politics and Public Administration





## We All Can Make a Difference!

The Hong Kong Jockey Club Centre for Suicide Research and Prevention established in 2002, has adopted a public health approach advocated by the World Health Organization for suicide prevention that involves multi-layer intervention: indicated, selective and universal. The Centre has become a knowledge hub for suicide prevention locally and internationally. We have worked with community stakeholders (Suicide Prevention Service, Befriender International, Facebook, Google, Caritas, Hong Federation of Youth, HK Boys and Girls' Association, etc.) to launch community-based programmes and develop good practice models for suicide prevention.

We are grateful to the support of the Hong Kong Jockey Club Charities Trust, the Hong Kong Government and many other foundations and donors which have been instrumental to promoting innovative, interdisciplinary, internationally with research for suicide prevention.

We have developed the most comprehensive surveillance and monitoring system of suicides using Coroner's court data. We have conducted psycho-autopsy research in identifying risk and protective factors for suicidal risks. We have been developing good practice models including positive mental work for school children, restriction of means of suicide, social media engagement with vulnerable youth, identifying poverty alleviation measure for vulnerable in our community. Our work has been published in many high impact journals and has attracted many international organisations for collaborations.

We wholeheartedly believe knowledge can lead to change and bring betterment to community knowledge. Our work has received an enthusiastic response from the community and has helped to reduce myths of suicide and improve awareness of mental health in the community. The quality of suicide news reporting has significantly been changed to avoid the copycat effect. Combined with the concerted effort in the community, the suicide rate of Hong Kong went down from its historical high 18.8 per 100,000 in 2003 to estimated 12.6 per 100,000 in 2016. It is an impressive 36.9% reduction despite the recent marginal increase among the younger population.

It is essential that the effort is sustained and further developed to further reduce suicide in the community. We all can contribute to our capacity and make a difference for the betterment of our community. We are very fortunate to work with a dedicated team in the Centre, advised by esteemed international advisors and chaired by Ms Elsie Leung, GBM. The current team includes Raymond I and II, Geoff, Angies, Eliza, Shirley, Daniel, Michelle, Sam, Rickey, Christine, Kristy, Aron, Jacky, Yulin, Hanlu, Flora, Joyce and many friends and stakeholders in the community.

**Professor Paul Yip Siu-fai (葉兆輝教授)**

**Dr Frances Law Yip-wai (羅亦華博士)**

**Dr Cheng Qijin (程綺瑾博士)**

Hong Kong Jockey Club Centre for Suicide Research and Prevention





## A New Era: Recovery-oriented Policy Planning in Mental Health

The *Mental Health Review Report*, released by the HKSAR Government in March 2017, stresses the importance of "strengthening community support for those recovering from mental illness, enhancing the capacity of healthcare professionals at the primary care level, developing public-private partnership, as well as providing more multi-disciplinary support in the community as the long-term strategy in the development of mental health policy" (pp.1-2).

The above quotation aligns with the concept of recovery. Recovery, despite the limitations caused by illness, is a personal and unique change process during which a person adopts new values, skills, knowledge and roles to lead a satisfying and hopeful life. As such, a person's lived experiences are no longer viewed as barriers or a handicap but as assets and strengths that can contribute to and facilitate positive change in society.

However, achieving this is easier said than done. The Faculty of Social Sciences of The University of Hong Kong (HKU), together with the Department of Social Work and Social Administration and the Department of Psychiatry, held a two-day international conference, *RSP 4.0*, on January 11 and 12, 2018. The conference discussed the latest theoretical trends and practices regarding recovery.

Two pre-conference seminars were held in October and December 2017. Over 200 people from the community took part in discussions about the stereotyping of people with mental illness in the mainstream media. The framework of recovery-oriented mental health services in Hong Kong over the past few decades was also reviewed. The seminars were followed up by a series of articles penned by Professor Samson Tse and Dr Chung Ka Fai (Conference's co-chairpersons). The articles appeared in the *South China Morning Post*, the *Hong Kong Economic Journal* and *Ming Pao*. Two masterclasses in January were run by Professor Larry Davidson of Yale University and Professor Mike Slade of the University of Nottingham.

The main conference, *RSP 4.0*, kicked off on January 11, 2018, and attracted an estimated three hundred participants from various fields including academia, psychology and medical professions, self-help and peer support services, and social work. The participants joined keynote speakers Professor Davidson and Professor Slade

as well as over forty overseas and local experts at HKU to explore the latest trends of recovery and its execution at the community, social welfare and clinical service levels.

Each day of the conference had a significant theme: Policy Planning (January 11) and Intervention and Support Services (January 12). In his keynote lecture, Professor Davidson emphasised that recovery-oriented practice requires a collaborative approach based on the values and needs of people in recovery. He reiterated the importance of shifting the current focus of most services from risk management to the promotion of a full life in the community while involving peers and family members in the process of formulating mental health policies. Meanwhile, Professor Slade encouraged helping professionals to perceive recovery as a "disruptive innovation", to initiate a new paradigm of trauma-informed, asset-based and inclusive humanistic services revolving around human rights and social justice.

Other highlights of the conference included interactive workshops run by local NGOs, who utilised various art forms such as puppetry, storytelling and music to facilitate dialogue between audiences and peers. The conference ended fittingly with a panel discussion involving medical professionals, a peer worker and a legislative council member to promote cross-sector collaboration for the promotion of peer support services.

The conference was well-received. Over 90% of participants said the conference was informative and would be useful to their work or research. They were especially inspired by the two keynote addresses and impressed with the diverse content and interactive nature of the programme, which involved people with lived experiences of mental illness.

Recovery is now the shared vision of an approach to be adopted by the Hospital Authority, the Social Welfare Department and non-governmental organisations when providing services to adults with severe mental illness in Hong Kong. We believe that *RSP 4.0* made a meaningful long-term impact on government policies and services for persons in recovery.

**Professor Samson Tse Shu-ki (謝樹基教授)**  
Department of Social Work and Social Administration





## HKU Illicit Drug Market Research's Impact on Drug Policy in Hong Kong and Beyond

From the opium of the 1950s to the trending methamphetamine in the present days, illicit drug use has long been a social problem in Hong Kong. With the gradual change in drug trends and social environment in Hong Kong, research on the local drug market, drug users population, process and experience of drug using and rehabilitation service uses are vital to improving drug relevant policies and services.

Illicit drug use has been one of our research focuses at the Centre for Criminology for the past two decades. We have conducted regular evaluation research for drug rehabilitation services and organised international workshops to promote the advancement of relevant policies. This is apart from recent academic research such as '*How Young People obtain Drugs in Hong Kong*' (2012-15, funded by GRF) and '*Assessing the socio-economic cost of drug use in HKSAR*' (2015-17, funded by Beat Drugs Fund).

Through academic research, the Centre for Criminology has identified trends and patterns of the changing Hong Kong drug market. Drug trends in Hong Kong have shifted significantly since the 1950s. With the rise and fall of heroin among drug users, '*The Meaning of Heroin Use in the Age of Psychoactive Drugs: Generational Perspectives*' (2008-10, funded by GRF) explored the generational differences among older and young heroin users in terms the heroin use methods and self-image in the 2000s. Understanding these differences informed the Government and Drug Treatment Residential Centres to adjust relevant homogeneous policies and services to better meet the needs of different drug users. Our more recent research '*How Young People obtain Drugs in Hong Kong*' (2012-15, funded by GRF) has captured the idea of social supply of drugs and young people's perceptions/misconceptions of what illegal drug trafficking refers to. The centre has also collaborated with the Centre for Suicide Research and Prevention at HKU on the project '*Assessing the socio-economic cost of drug use in HKSAR*' (2015-17, funded by Beat Drugs Fund). Updated drug using trends, calculation of costs of drug-related services, as well as the usual public service pathways experienced by drug users, were identified.

Apart from bringing knowledge on drug trends in Hong Kong, this research has informed policy level changes. Through conducting various research on the drug markets in Hong Kong, Professor Karen Joe Laidler identified the

unique use of ketamine in comparison to other countries such as the US. Building on the knowledge in the field, she is frequently invited to give expert evidence on court cases on drug offences since 2007. In particular, Professor Laidler gave expert evidence in a landmark case in 2007 [CACC 126/2007] that created a new sentencing standard for drug offences associated with psychotropic drugs.

The centre aspires to maximise the impact of academic research on the wider community. Previous research projects on the drug market have enabled us to bring change at the frontline practise level. For example, our evaluation research on the residential drug treatment for female drug users provided by Barnabas Charitable Service Association Limited significantly provided constructive and practical feedback to the organisation. This led to a successful improvement in their drug rehabilitation program and facilities. Professor Laidler also gave a talk about drug use and sex offence in a symposium '*Prism - Professional Symposium on Assessment, Sentencing and Rehabilitation of Sex Offenders*' organised by the centre, Department of Sociology, HKU and The Society of Rehabilitation and Crime Prevention, Hong Kong (SRACP). This symposium has attracted over 250 participants including the Police Force, CSD, various NGOs working with ex-prisoners, as well as HKU undergraduate and postgraduate students. Also, the centre has developed a long-term partnership with Open Society Foundations in providing training workshops about drug policy and human rights for practitioners in East and Southeast Asia. From 2015 to 2017, the training workshops have invited expert speakers from the UK, U.S., Australia, Indonesia, Thailand, Hong Kong, Macau, creating conversation and knowledge exchange for over seventy practitioners in Hong Kong and other Southeast Asian countries.

To conclude, since the establishment of the centre in 1999, we have been devoted to providing a home for coordinated and indigenous as well as international studies of drugs. At the same time providing a platform of valuable knowledge exchange among academics and practitioners from different disciplines. The centre aims to continue developing a long-term and sustainable research and training programs for practitioners, scholars and the community at large in the future.

**Professor Karen Joe Laidler**  
Director, Centre for Criminology



Since 2016, The Jockey Club Water Initiative on Sustainability and Engagement (JC-WISE) project, has brought a whirlwind of activities to the community. The aim was to raise the public's awareness, and appreciation, of the importance of attaining long-term water sustainability for Hong Kong. This was accomplished through enhancing the understanding of the multiple values of water through re-connecting the public with our rivers and recognising the impacts of consumption on local and distant freshwater resources through the Water Footprint.



The highlight of JC-WISE public education campaign was the Water Fun Fest; the first water carnival in Hong Kong. The Water Fun Fest was a part of the HK SciFest 2018 in collaboration with the Hong Kong Science Museum. The event attracted four thousand public participants on March 24 and 25, 2018. The Water Fun Fest developed various kinds of interactive and infotaining games and exhibits with up-to-date AR technology which educated the community on the concept of water footprints and the multiple values of river catchment in Hong Kong. This led to the participants' awareness of water conservation and the importance of water sustainability. An interactive digital "WISE River Sketch" was built in an ultra-clear LED Wall which allowed families to transfer their 2-D drawings of animals and plants to become 3-D objects living in the virtual riverscape, enhancing understandings of bio-diversity and recreation of rivers. Participating parents and children understood the knowledge about river formation and management through building their river in the AR Intelligent sandbox. Participants also enjoyed playing interactive games to learn the concept of the hidden water footprints of food in a virtual supermarket. JC-WISE developed the first-of-its-kind water footprint mobile app. Participants used this app to design a healthy dinner menu, and figure out the water footprint involved in the food producing process. After the Fun Fest, participants were able to understand the importance of water sustainability and commit themselves to implement water conservation in daily life.



## My River, My Community Guided Tours

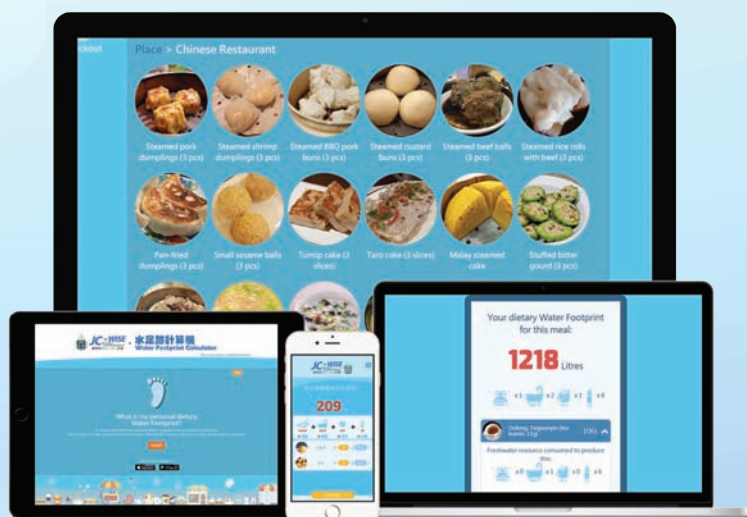
To enhance public knowledge and connection with our city's rivers, JC-WISE organised professional "train-the-trainer" workshops and guided field trips. The trips to seven selected river catchments were designed to nurture river ambassadors in the hope of leading students and the public to visit and appreciate our rivers. A drone video of the entire river catchment is on the interactive open-access GIS-based database. The Project has successfully organised a series of guided field trips to Shan Pui, Lam Tsuen and Sheung Yue Rivers. It trained more than one hundred secondary school teachers, green group practitioners and the press to help to reconnect the public with our lovely rivers.



GIS-based Database:  
[www.socsc.hku.hk/jcwise/gis-based-database](http://www.socsc.hku.hk/jcwise/gis-based-database)

## Water Footprint Calculator

The water footprint calculator developed by the Project has attracted over 10,000 users. This is the first web and mobile application in Hong Kong to show the virtual water content of selected local dishes. A water footprint databank with more than one hundred local food ingredients was developed in phase two. Users are now able to find out their dietary water footprint and create their own low water footprint recipes. Download it now to practice your low water footprint living!



## 水足跡計算機

### Water Footprint Calculator







## 45<sup>th</sup> Anniversary Gathering of the

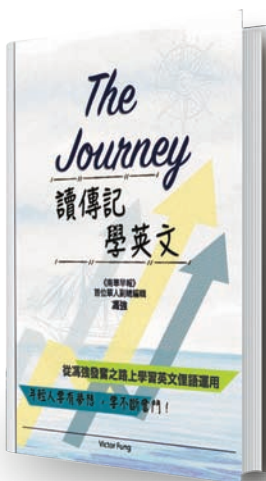
CLASS OF

**1972**

The BSocSc Class of 1972 (Group B) had its 45<sup>th</sup> Anniversary celebration in Hong Kong in November 2017. Overseas alumni from Canada, Australia, USA, Singapore and the Mainland joined their locally based classmates and family in the day-long event which started with a light lunch. This was followed by a leisurely hike in Lantau, tea at Discovery Bay Golf Club and a sumptuous dinner in Central. For the first time in so many years, with fond memories of Lily Pond and the Loke Yew Hall, some took their time visiting the University the following day.

Mr Choi Sau Yuk (蔡秀煜先生)

BSocSc (1972)



## THE JOURNEY

## 讀傳記 學英文

This book, written in English, is about my life and how good language skills have improved my career. Learning English is a life-long endeavour. I have succeeded in acquiring excellent English skills. So will you. Never give up.

Professor Victor Keung Fung (馮強教授)

MSocSc (1982)

## The **ART** of Spreading Happiness through **MUSIC** and **READING**



A strong believer in the importance of the arts and the minimisation of screen time, Ms Joanne Chan decided to publish an interactive music book entitled "Happy Gabby Plays Classical Music" to ignite young readers' love for music and reading.

Ms Joanne Chan Jo-win (陳祖泳女士)

MJ (2008)



## Struggle is Good for Innovation



I graduated in 1994 as BEcon. I started my first business, a management-consulting firm in 2009, with five years of banking and ten years as a CFO. We advised many SMEs in different industries on their business strategy. The business grew to thirty people in HK and China in six years. I struggled to scale it up as most client acquisition and services were too concentrated on myself. I decided to close the firm and took a one-year career break.

My dream is to build a brand where the business can be sustained without myself. In 2015, I decided to start a co-working business — theDesk, with my partner Adrian. We invested most of our savings and committed 100% to it. After spending six months of formulating our business strategy and three months designing and building, we opened our first space in Sai Wan, just next to the HKU station in June 2016.

In the first two months, the business grew fast as expected until an international player launched their first massive space in HK and started a price war. Our business struggled, and we were barely surviving. We reformulated our strategy. We believe that community is the key to coworking business. We developed our unique value proposition - INCLUSIVE COMMUNITY. We connect members in our space, and we include neighbouring businesses with an O2O integration system.

This innovation, from struggle, not only saved us but also made us prosper. Last December, we expanded to Causeway Bay and launched a new site of 5,000 square feet in One Hysan Avenue. In March, we launched another new site of 15,000 square feet in Leighton Centre.

Mr Thomas Hui Biu (許飈先生)  
BEcon (1994)

We **SERVE, LEARN**  
and **GROW**



The HKU Master of Social Sciences (Counselling) Alumni Association (HKUCAA) currently has 380 ordinary members and 80 student members. Regularly organised are educational, recreational, social and community services for members.

The following activities were held during the Spring period: an experiential Creative Music Therapy Workshop for learning self-listening as a counsellor; A BBQ Fiesta open to family members to enhance social cohesion; and a Social Service Project of Life Story Book in collaboration with the Hong Kong Sheng Kung Hui St. Matthew's Neighbourhood Elderly Centre.

Ms Daphne Leung Chit-ying (梁哲瑩女士)  
MSocSc (2013)



## EVENTS SPOTLIGHT

### Film screening: "You shoot, I shoot" and after talk by Director Pang Ho Cheung and Dr Ng Chun Hung

彭浩翔 X 吳俊雄 《買兇拍人》  
電影播放會及映後導演座談會

September 13, 2017

Department of Sociology



### Fireside Chat on "Advocacy in Films and Media" with Ruby Yang

September 22, 2017

Journalism and Media Studies Centre

### In conversation with Antony Dapiran and Christopher DeWolf "Borrowed Spaces/Contested Spaces"

October 12, 2017

Journalism and Media Studies Centre



### Seminar on Real-time Multivoxel fMRI Neurofeedback for Computational Studies of Metacognition and Consciousness

November 1, 2017

Department of Psychology



### 2<sup>nd</sup> International Cognitive Stimulation Therapy Conference

December 1 – 2, 2017

Sau Po Centre on Ageing



## Palliative Social Work Symposium 2017 – “Next Page in Palliative Social: Research and Engagement in Neighborhood”

December 2, 2017

Department of Social Work and Social Administration



寧養社會工作專業論壇 二零一七  
寧養社會工作新一頁：社區研究及參與



## Movie Screening on “Erwiana: Justice for All” – Co-organized with Department of Sociology, HKU, Mission for Migrant Workers and Network of Indonesian Migrant Workers

December 10, 2017

Centre for Criminology

## Legislative Rules and Policy Outcomes in Hong Kong’s Legislative Council

December 12, 2017

Department of Politics and Public Administration



## The Chartered Institute of Logistics and Transport Hong Kong Accreditation Visit 2017

December 19, 2017

Department of Geography



## ExCEL3

### 2018 ARNOVA-Asia Pre-conference Forum: The Costs and Benefits of Collaboration for Public and Nonprofit Managers: A Dialogue and Discussion

January 8, 2018

### 2018 ARNOVA-Asia Pre-conference Forum: Effective Advocacy by Nonprofit Organisations

January 15, 2018



## EVENTS SPOTLIGHT

### Jockey Club End-of-Life Community Care Project (JCECC)

#### Gala Premiere: "My Little Story with Mom" and End-of-Life Care Public Seminar

November 1, 2017

#### Seminar on Conversations Change Lives: Know Your Choices· Share Your Wishes

November 17, 2017

#### Seminar on Western and Asian Wisdom in End-of-Life Care, Death and Grief

December 7, 2017



### Jockey Club Holistic Support Project for Elderly Mental Wellness (JC JoyAge)

#### International Symposium on Care System and Social Policy for Elderly Mental Wellness

November 3, 2017



### Jockey Club Autism Support Network (JC A-Connect)

#### Public Talk on HK SciFest 2018: The Unique Brains of People with ASD

#### 2018香港科學節公開講座：

#### 自閉人士與別不同的腦袋

April 15, 2018



## Contemporary China Studies Public Lecture

### Changing the World with Ideas? The Challenges of a Political Philosopher Turned-Politician

September 18, 2017

Professor Jiang Yi-Huah

Former Premier of Taiwan

Professor, Department of Public Policy

College of Liberal Arts and Social Sciences, City University of Hong Kong



### Global China and the Future of Capitalism Seminar Series: Utopia and Modernity

March 15, 2018

Professor Krishan Kumar

William R Kenan Jr Professor of Sociology

University of Virginia



### China's 21<sup>st</sup> Century Strategy: The Colombo Lotus Tower and the Belt and Road Initiative

March 29, 2018

Professor Patrick Mendis

Associate-in-Research

Fairbank Centre for Chinese Studies

Harvard University



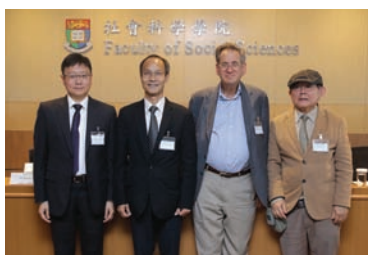
## Public Policy Forum/Seminar

### Building Impact with Facebook Data for Social Good

September 26, 2017

Ms Chaya Nayak

Public Policy Research Manager, FaceBook



### Deliberation and Public Policy

November 16, 2017

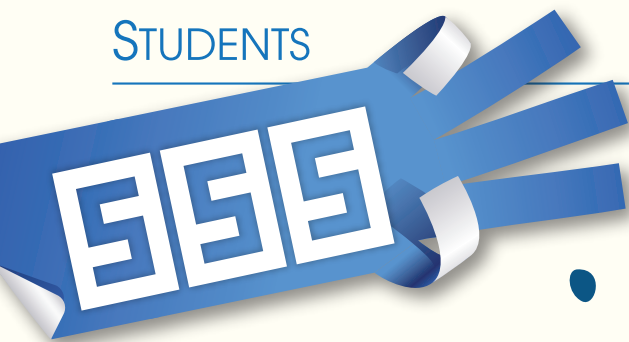
Professor Robert Luskin

Associate Professor, Department of Government, The University of Texas at Austin



# STUDENTS

Social Sciences Society, HKUSU



Social Sciences Society, HKUSU is a student organisation, which aims at improving the general welfare of its members. This year we hope to increase members' sense of belonging towards the Society, as well as to enhance members' awareness as part of the local community through the organisation of various activities.

In April, the 'Superpass Festival x Welfare Week 2018' encouraged members to strive for excellence in their examinations in various ways such as writing on red couplets and receiving red packets that symbolise luck. Members can enjoy snacks, take pictures with props, as well as receive welfare packs that are filled with our heartfelt support at the booth.

Simultaneously, an exhibition on gender identity was held. A common misconception is that gender is synonymous with sex. However, gender identity is a very different concept, which is growing in importance. The executive committee believes that it is worthy of attention, and thus, an informative exhibition will be held to promote understanding of the topic.

August marks the start of our orientation series. An orientation camp will be organised which gathers our Faculty's freshmen and seniors. Senior members are encouraged to act as both companion and guide of the freshmen and accompany them through a bonding journey through various team-building activities. Freshmen will understand more about our university and the Faculty, as well as to meet new friends after the camp.

A high table dinner, a traditional event of The University of Hong Kong, will be organised in September. Students will dress in green gowns for a special dinner in Loke Yew Hall. An esteemed member of the community will be invited as the Guest of Honour to share his/her experience and knowledge. It is a precious occasion where members of the Society can gather and mingle with each other. We also aim to facilitate intellectual exchange amongst guests and students under a relaxing atmosphere.

Members are encouraged to actively participate in our future events. For more updated information, please like the Facebook page of Social Sciences Society, HKUSU. (<https://www.facebook.com/SSSHKUSU/>)

**Miss Lilian Lo Wing-yan (勞穎茵小姐)**

Chairman

Social Sciences Society, HKUSU

Session 2018





## DONATIONS

## Donations (From August 2017 to February 2018)

Donor	Recipient	Nature	Amount (HK\$)
Miss Winnie Kwok Siu-ye	Centre on Behavioral Health	Supporting Activities of the Centre	20,000
	The HKJC Centre for Suicide Research and Prevention	Supporting Activities of the Centre	50,000
Dr Mak Lai Ping	Department of Psychology	Supporting Educational, Research and Community Activities	33,000
Facebook Hong Kong Limited	Faculty of Social Sciences	Supporting Project on "Collaborative Governance for Social Good" Initiative	350,000
Ms Gracie Foo Siu-wai		Activities of the Faculty	20,000
Global Investigative Journalism Network	Journalism and Media Studies Centre	Supporting Activities of the Centre	97,500

We would like to hear from all alumni, especially those who have not been in contact for some time. We wish to take this opportunity to invite you to share with the Faculty the contact details of local or overseas alumni with whom you are in touch. Please complete and return the following form to the Faculty so that we can keep them informed of the most up-to-date developments and activities of the Faculty and the University.

## Part I : Your Information

Name : \_\_\_\_\_  
(Surname) (Given Name)

Chinese Name : \_\_\_\_\_

Sex : M/F

Contact Phone No. : \_\_\_\_\_

E-mail: \_\_\_\_\_

Year of Graduation: \_\_\_\_\_

Degree Awarded: \_\_\_\_\_

## Part II: Other Alumni's Information

Name : \_\_\_\_\_  
(Surname) (Given Name)

Chinese Name : \_\_\_\_\_

Sex : M/F

Contact Phone No. : \_\_\_\_\_

E-mail: \_\_\_\_\_

Correspondence Address: \_\_\_\_\_

Year of Graduation: \_\_\_\_\_

Degree Awarded: \_\_\_\_\_



Fax: 2517 0806  
E-mail: socsc@hku.hk

# Stay in touch



## SELECTION OF RECENT PUBLICATIONS

### A 564-Year Annual Minimum Temperature Reconstruction for the East Central Tibetan Plateau from Tree Rings

Authors: Li, J & Li, T

Journal: Global and Planetary Change

Minimum temperatures have increased rapidly on the Tibetan Plateau (TP) in recent decades, but there is still a lack of long-term background information to evaluate the nature of the anomaly. This paper presented a 709-year tree-ring width chronology from *Sabina tibetica* Kom. on the east-central TP, with reliable coverage from 1451 to 2014. Based on the significant relationship between tree growth and annual minimum temperature ( $T_{min}$ ), from previous April to current March, this paper reconstructed the pApril-cMarch  $T_{min}$  for the past 564 years. The results revealed that the recent warming from 1989 to 2014 is unprecedented over the past five centuries. The study suggested that the Atlantic Multidecadal Oscillation (AMO) may have played a crucial role in multidecadal temperature variations over the east-central TP.



Dr Li Jinbao (李金豹博士)  
Department of Geography

### The Relationship Between Cyberbalkanization and Opinion Polarization: Time-Series Analysis on Facebook Pages and Opinion Polls During the Hong Kong Occupy Movement and the Associated Debate on Political Reform

Authors: Fu, K W & Chan, C H

Journal: Journal of Computer-Mediated Communication

Online activity is often cyber Balkanized but it remains unclear whether this phenomenon leads to the polarisation of public opinion or if the relationship works in the reverse direction. This study tested the temporal association between cyber balkanization and opinion polarisation during the debate on political reform in Hong Kong. Online communities were constructed by a post-sharing network of 1,644 Facebook pages (101,410 shares); the differences between intra- and inter-community shares were derived, and a cyber balkanization index was computed.

Time-Series analysis showed that the index temporally preceded the opinion polarisation, i.e., most of the opinion poll's respondents gave extreme ratings to government leaders, but not vice versa. The index was particularly predictive of polarisation among youth.

Dr Fu King Wa (傅景華博士)  
Journalism and Media Studies Centre

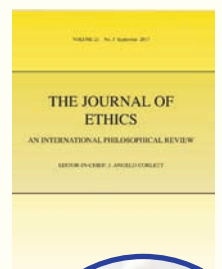


### Proportionality in Self-Defense

Author: Steinhoff, U

Journal: Journal of Ethics

This article considers the proportionality requirement of the self-defence justification. It first lays bare the assumptions and the logic and often illogic underlying very strict accounts of the proportionality requirement. It argues that accounts that try to rule out lethal self-defence against threats to property or against threats of minor assault by an appeal to the supreme value of life have counterintuitive implications and are untenable. Furthermore, it provides arguments demonstrating that there is not necessarily a right not to be killed in defence against theft or minor assaults. While there is a general moral right of self-defence and a general right to life, the scope of these rights (like the scope of the right to liberty and the scope of the right to property) depends on certain social facts that even within a liberal framework can differ from one society to another. Moreover, the proportionality of self-defence does not depend on the rights of the aggressor alone, but also on a precautionary rule, shaped by the balance of interests of the society in question and aimed at protecting innocent people and other social interests. This rule can protect an aggressor even in cases where he does not have the right to such protection.



Dr Uwe Steinhoff (石樂凡博士)  
Department of Politics and Public Administration



## Hidden Markov Model Analysis Reveals the Advantage of Analytic Eye Movement Patterns in Face Recognition Across Cultures

Authors: Hsiao, J H, Hayward, W G, Chuk, T, Crookes, K & Chan, A B  
Journal: Cognition

*It remains controversial whether culture modulates eye movement behaviour in face recognition. Inconsistent results have been reported regarding whether cultural differences in eye movement patterns exist, whether these differences affect recognition performance, and whether participants use similar eye movement patterns when viewing faces from different ethnicities. These inconsistencies may be due to substantial individual differences in eye movement patterns within a cultural group. Here we addressed this issue by conducting individual-level eye movement data analysis using hidden Markov models (HMMs). Each individual's eye movements were modelled with an HMM. We clustered the individual HMMs according to their similarities and discovered three common patterns in both Asian and Caucasian participants: holistic (looking mostly at the face center), left-eye-biased analytic (looking mostly at the two individual eyes in addition to the face center with a slight bias to the left eye), and right-eye-based analytic (looking mostly at the right eye in addition to the face center). The frequency of participants adopting the three patterns did not differ significantly between Asians and Caucasians, suggesting little modulation from culture. Significantly more participants (75%) showed similar eye movement patterns when viewing own- and other-race faces than different patterns. Most importantly, participants with left-eye-biased analytic patterns performed significantly better than those using either holistic or right-eye-biased analytic patterns. These results suggest that active retrieval of facial feature information through an analytic eye movement pattern may be optimal for face recognition regardless of culture.*

**Dr Hsiao Janet Hui-wen (蕭惠文博士)**  
Department of Psychology



## What is Consciousness, and Could Machines have it?

Authors: Lau, H, Dehaene, S & Kouider, S  
Journal: Science

*The controversial question of whether machines may ever be conscious must be based on a careful consideration of how consciousness arises in the only physical system that undoubtedly possesses it: the human brain. We suggest that the word "consciousness" conflates two different types of information-processing computations in the brain: the selection of information for global broadcasting, thus making it flexibly available for computation and report (C1, consciousness in the first sense), and the self-monitoring of those computations, leading to a subjective sense of certainty or error (C2, consciousness in the second sense). We argue that despite their recent successes, current machines are still mostly implementing computations that reflect unconscious processing (C0) in the human brain. We review the psychological and neural science of unconscious (C0) and conscious computations (C1 and C2) and outline how they may inspire novel machine architectures.*



**Dr Hakwan Lau (劉克頑博士)**  
Department of Psychology





## SELECTION OF RECENT PUBLICATIONS

### Art Therapy and Mindfulness with Survivors of Political Violence: A Qualitative Study

Authors: Ho, R T H & Kalmanowitz, D L

Journal: Psychological Trauma: Theory, Research, Practice, and Policy

*This study's objective was to understand how art therapy and mindfulness meditation could be integrated together in the context of different cultures and political violence and in work with asylum seekers suffering from trauma.*

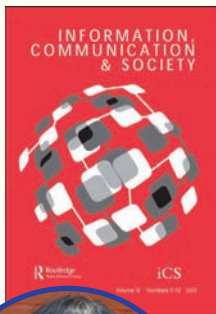


**Professor Rainbow Ho Tin-hung (何天虹教授)**  
Department of Social Work and Social Administration

### Challenging Digital Capitalism: SACOM's Campaigns Against Apple and Foxconn as Monopoly Capital

Authors: Pun, N, Tse, T & Ng, K

Journal: Information, Communication & Society



*"Utopia or dystopia—to where will the 'digital revolution' lead human society?" is a question that remains unanswered. Negotiating between two opposing standpoints, this article, looking at a form of trans-border activism originally driven by suicides and protests of Foxconn workers who produce iPhones, iPads and many other i-gadgets for the world's consumers, is an attempt to explore a politics of online/offline resistance against digital capitalism. Based in Hong Kong (HK), SACOM is a leftist student group, which works to support Chinese workers in campaigning against corporate power and generating trans-border networks through media exposure, international activism, and localised organisation. Combining online and offline activism, SACOM strives to extend the reach of their worker-consumer campaign to the worldwide audience by transgressing the Chinese state's dominance of capital and political control. This experience confirms that online and offline activism should never be separated, and brings about a new understanding of the transformative event, the relationship between global production and worker resistance in China, about potential movements, and about the goals of social change.*

**Professor Pun Ngai (潘毅教授)**  
Department of Sociology

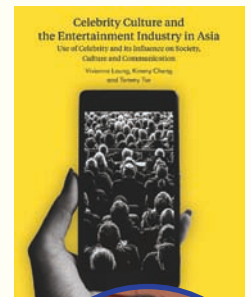


### Celebrity Culture and the Entertainment Industry in Asia: Use of Celebrity and Its Influence on Society, Culture and Communication

Authors: Cheng, K, Leung V & Tse, T

Publisher: Bristol, United Kingdom: Intellect; Chicago: University of Chicago Press (distribution)

*What is a celebrity? Do we all conceive it similarly across time and space, cultures and contexts? Who produces, propagates and twists its meaning and manifestation? This book attempts to enrich the existing literature of celebrity studies through in-depth interviews with an array of seasoned practitioners in various entertainment industries and members of media and brand communication teams in Hong Kong, mainland China and South Korea. Specifically celebrities, media workers, artist managers and publicists. This book helps readers understand the multiple facets of celebrity power and culture, through discussing celebrity creation and endorsement cases across East Asia over the past three decades. The book explores the construction of self-identity, celebrity-driven consumer behaviour and embedded ideologies, in addition to its analogous and dissimilar impacts on branding, society and consumers in the specified sociocultural contexts. Various western, cross-disciplinary theories that explain the influence of celebrities is examined and contextualised to real-life scenarios in Asia in the hopes of bridging the gap between theory and practice.*



**Dr Tommy Tse Ho-lun (謝浩麟博士)**  
Department of Sociology



## A Meta-Analytic Review on Social Relationships and Suicidal Ideation Among Older Adults

Authors: Yip, P S F, Chang, Q & Chan, C H  
Journal: Social Sciences & Medicine

*Social relationships play an important role in mental health as well as suicidal ideation in later life. In contrast with the other well-established risk factors, despite an increasing number of related studies, no meta-analyses focusing on social relationships and late-life suicidal ideation have been published. Synthesis of data across the studies using different measurements of social relationships would allow for comparison of the effects on late-life suicidal ideation that have not been studied before. Therefore, we conducted a meta-analysis of the studies published between January 1, 2000, and November 31, 2016 extracted from 7 medical and social science databases. 31 studies with 83 estimates of Odds Ratios ("ORs") on the associations between social relationships and late-life suicidal ideation were identified to compute effect sizes using a random-effect model. Sensitivity analyses were also performed to evaluate their heterogeneity and bias. Moderator analyses were further conducted to determine moderating factors of the associations. Eventually, across the 31 studies (203,152 participants), the overall random effect size was OR 1/4 1.57(95% CI [1.40, 1.76]), indicating a 57% likelihood increase of suicidal ideation for elderly participants with discordant social relationships. The functional measures (OR 1/4 1.77; 95%CI [1.48, 2.10]) of social relationships, however, were more predictive than structural measures (OR 1/4 1.37; 95%CI [1.25, 1.51]). Among all the measures of social relationships, elderly mistreatment (OR 1/4 2.31; 95% CI [1.81, 2.94]) had the strongest effect size, followed by perceived loneliness (OR 1/4 2.24; 95%CI [1.73, 2.90]) and poorly perceived social support (OR 1/4 1.59; 95% CI [1.37, 1.83]). The associations between social relationships and late-life suicidal ideation were moderated by country income levels, sociocultural context, study types, and various measurements of social relationships. More importantly, our study is the first meta-analysis to provide significant evidence for improving social relationships, especially in perceived bonds, is a promising strategy in reducing late-life suicide risks.*



**Professor Paul Yip Siu-fai (葉兆輝教授)**

Hong Kong Jockey Club Centre for Suicide Research and Prevention

## Alumni Groups

Hong Kong University Social Sciences Alumni Association | <http://www.socsc.hku.hk/af/af.htm>

HKU Centre on Behavioral Health Alumni Association | <http://hku-msbh.blogspot.hk>

The University of Hong Kong Social Work Alumni Association | <http://hkuswaa.socialwork.hku.hk/index.htm>

HKU Master of Arts in Transport Policy and Planning Association | <http://web.hku.hk/~matppa>

HKU MIPA (Master of International and Public Affairs) Alumni Association

HKU MPA (Master of Public Administration) Alumni Association | <http://www.alumni.hku.hk/mpaaa>

HKU Master of Social Sciences (Counselling) Alumni Association | <http://graduate2.socialwork.hku.hk>

We are eager to hear from social sciences alumni from any of our programmes (BSocSc, BSocSc (G&L), and BSW).  
Please do keep in touch at: [socsc@hku.hk](mailto:socsc@hku.hk)



# CONGRATULATIONS

## Student

## Award

### **A Sustainable, Therapeutic and Professional Training Platform with Interdisciplinary Effort as an Innovative Solution for the Elderly Needs in both Physical and Mental Spectrums**

Having devoted to social welfare industry for over a decade, the frontline experience to connect between needs and resources enabled me to have a reality check of how I can better perform in a role that benefits the society. With enrolling in the Master of Global Public Policy program, I had the chance to learn more about sustainability on human and environmental development in local and global perspectives.



With the support of DreamCatchers at HKU aiming to equip students with knowledge, skills, resources and network to kick-start their ideas to make a difference. My project focuses on creating a digital training platform with innovative, sustainable and therapeutic purposes, which is supported by interdisciplinary effort for Chinese elders for their physical and mental needs. It is truly my pleasure to be awarded in DreamCatchers and put forward my beliefs to give back to not only Hong Kong but also a wider society for all Chinese elders around the globe.

**Ms Nokia Cheung (張凱殷女士)**  
MGPP 2018

## Staff

## Award



### **Strategic Public Policy Research (SPPR-S2017.A8.007.17S) "In Search of New Economic Cooperation Models between Hong Kong and the Big Bay Area"**

Professor George Lin Chu-sheng (Department of Geography, HKU) has been, along with Professor Anthony Yeh Gar-on (Department of Urban Planning and Design, HKU), Professor Zhigang Tao (Faculty of Business and Economics, HKU), Professor Fiona Yang Fan (School of Geography, Sun Yat-sen University), and Professor Liu Xingjian (Department of Urban Planning and Design, HKU), awarded a SPPR grant (HK\$3,043,478. April 15, 2018 to April 14, 2021) to study economic cooperation between Hong Kong and the Big Bay Area of the Pearl River Delta region across the border in Guangdong Province. The purpose of the project is to critically assess new challenges and opportunities for

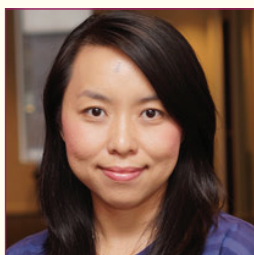
the re-integrated Guangdong-Hong Kong-Macao Greater Bay Area and identify possible paths for economic cooperation going beyond the earlier model of "Front Shop, Back Factory (前店后厂)". This is one of the only three awards given by the HKSAR this year.

**Professor George Lin Chu-sheng (林初昇教授)**  
Department of Geography



---

## Promotions



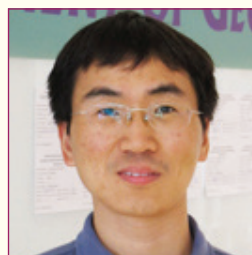
**Dr Celia Chan Hoi-yan**  
(陳凱欣博士)

Associate Professor  
Department of Social Work and  
Social Administration



**Dr Christian Shaunlyn Chan**  
(陳濟靈博士)

Associate Professor  
Department of Psychology



**Dr Li Jinbao**  
(李金豹博士)

Associate Professor  
Department of Geography



**Dr Tian Xiaoli**  
(田曉麗博士)

Associate Professor  
Department of Sociology

## New Appointments



**Dr Mia Moy Bennett**  
Assistant Professor  
Department of Geography



**Dr Gilad Feldman**  
Assistant Professor  
Department of Psychology



**Dr Enze Han**  
(韓恩澤博士)  
Associate Professor  
Department of Politics and  
Public Administration



**Dr Benjamin Max Hirsh**  
Assistant Professor  
Department of Geography



**Dr Huang Yu-Te**  
(黃昱得博士)  
Assistant Professor  
Department of Social Work and  
Social Administration



**Dr Raffaele Laforcezza**  
Assistant Professor  
Department of Geography



**Dr Lu Shuang**  
(盧霜博士)  
Assistant Professor  
Department of Social Work and  
Social Administration



# FORTHCOMING EVENTS

## June

### Book Launch: *Human Rights Futures*

Date: June 19, 2018  
Venue: Centennial Campus, HKU  
Contact: Dr Enze Han  
(Tel: 3917 1466; Email: enzehan@hku.hk)



### JCECC Conference on Innovation • Impact: The Review and Vision of Community End-of-Life Care

Date: June 20 – 21, 2018  
Venue: Centennial Campus, HKU  
Contact: Mr Alan Tang  
(Tel: 3917 1260; Email: alantst@hku.hk;  
Website: foss.hku.hk/jcecc/en)



### ARNOVA – Asia Conference 2018

Date: June 27 – 28, 2018  
Venue: Centennial Campus, HKU  
Contact: Mr Sum Siu  
(Tel: 3917 1261; Email: siuks@hku.hk  
Website: www.socsc.hku.hk/aac2018)

### Correctional Services Department Employment Symposium 2018

Date: June 29, 2018  
Venue: Loke Yew Hall  
Contact: Ms Leona Li  
(Tel: 3917 7459; Email: linglili@hku.hk)

## July

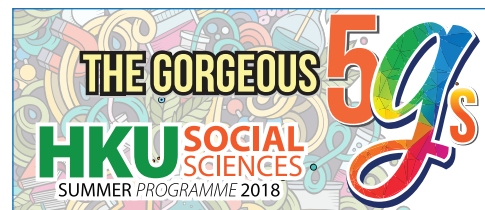


### Hong Kong ASD Conference 2018 – Autism and Education: What Works

Date: July 5, 2018  
Venue: Lecture Hall II, Lee Shau Kee Lecture Centre, Centennial Campus, HKU  
Contact: Miss Eunice Lai  
(Tel: 3917 1224; Email: aconnect@hku.hk; Website: www.socsc.hku.hk/JCA-Connect/hkasd2018)

### Pacific International Politics Conference 2018

Date: July 6 – 7, 2018  
Venue: Centennial Campus, HKU  
Contact: Dr Kai Quek  
(Tel: 3917 7118; Email: quek@hku.hk)



### Social Sciences Summer Programme 2018

Date: July 16 – 20, 2018  
Venue: Centennial Campus, HKU  
Contact: Miss Mary Tsang  
(Tel: 3917 1226; Email: sssp@hku.hk;  
Website: www.socsc.hku.hk/sssp/2018)



### Social Sciences Research Methods HKU Postgraduate Summer School

Date: July 23 – August 5, 2018  
Venue: 11/F, The Jockey Club Tower, Centennial Campus, HKU  
Contact: Mr Hayson Chan  
(Tel: 3917 1216; Email: ssrm@hku.hk;  
Website: www.socsc.hku.hk/ssrm/2018)

## August



### Asian Family Summit (AFS) Sustainable Development & Family Well-being: Agenda for Action in Asia

Date: August 19 – 22, 2018  
Venue: Centennial Campus, HKU  
(Email: info@cifa-net.org;  
Website: www.socsc.hku.hk/afs)

### Asian Family Summit Post-Conference Activity: Field Trip to Lam Tsuen River/Lai Chi Wo

Date: August 23, 2018  
Venue: Lam Tsuen River Catchment/Lai Chi Wo  
Contact: Miss Emily Cheuk  
(Tel: 3917 1232; Email: jcwise@hku.hk;  
Website: www.jcwise.hk)

## Societist

is published twice a year by the Faculty of Social Sciences, The University of Hong Kong. Electronic copies of *Societist* are available on the internet at [www.socsc.hku.hk](http://www.socsc.hku.hk). For hard copies of *Societist*, please e-mail us at [socsc@hku.hk](mailto:socsc@hku.hk).

The Faculty welcomes any form of contribution to *Societist*.

### Editor-in-Chief

Professor William Hayward, Dean  
(夏偉立教授)

### Editorial Assistants

Mrs Amy Tsang (曾梁惠慈女士)  
Miss Vanessa Sit (薛曉霞小姐)  
Miss Mary Tsang (曾詠釗小姐)

### Graphic Design

Mr Harold Tsang (曾可文先生)

### The Faculty of Social Sciences

reserves the right to publish and edit any material submitted for publication. Views expressed in *Societist* by contributors do not necessarily represent those of the Faculty or the University.

### Faculty of Social Sciences

11/F, Faculty of Social Sciences  
The Jockey Club Tower  
Centennial Campus  
Pokfulam Road, Hong Kong

Telephone: (852) 3917 1234

Fax: (852) 2517 0806

E-mail: [socsc@hku.hk](mailto:socsc@hku.hk)

Website: [www.socsc.hku.hk](http://www.socsc.hku.hk)

All rights reserved.  
Spring 2018