

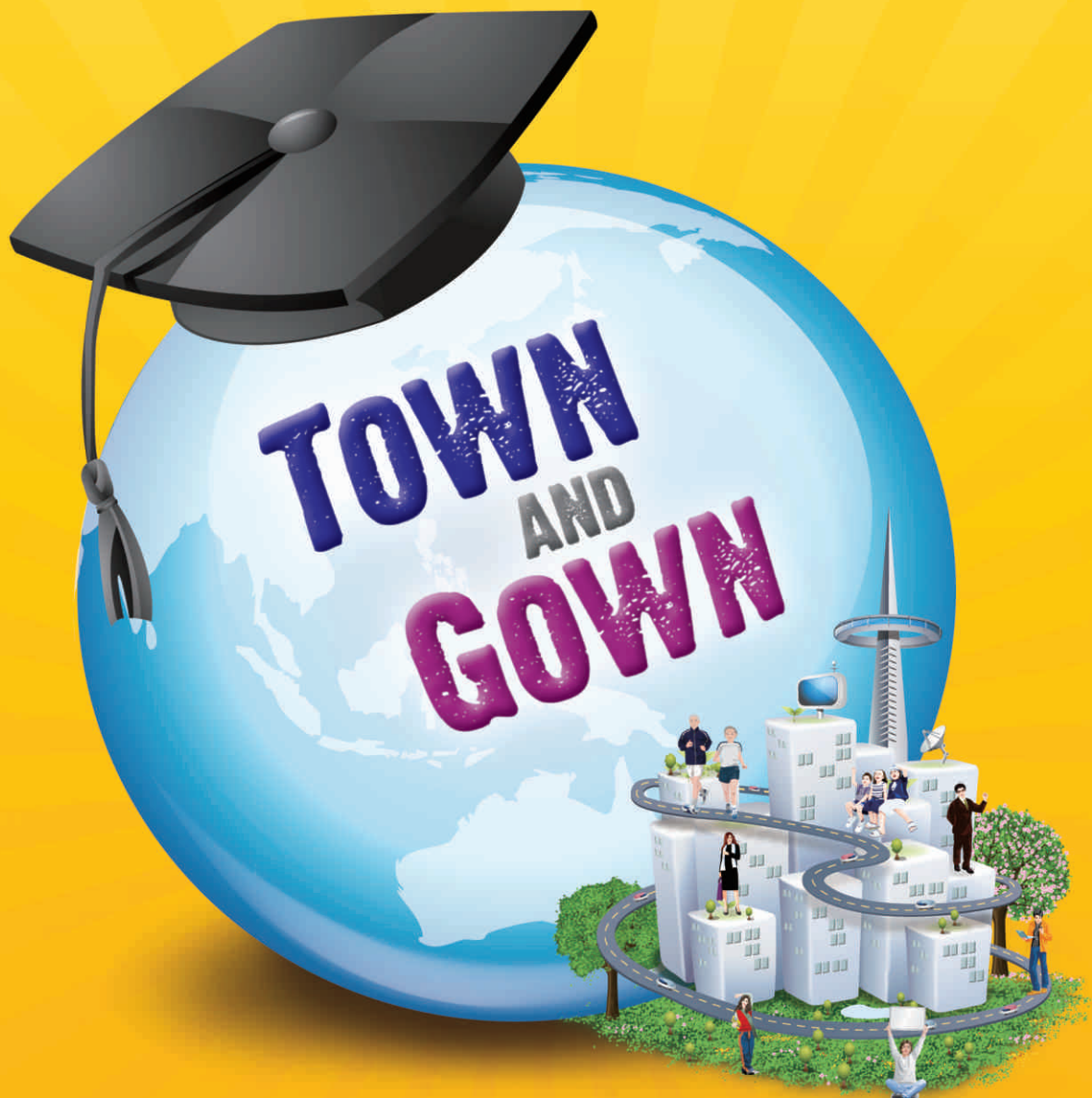
SPRING ISSUE 2009



www.hku.hk/socsc

# Socien**t**ist 社

# 科人



香港大學社會科學學院

FACULTY OF SOCIAL SCIENCES · THE UNIVERSITY OF HONG KONG

The Faculty of Social Sciences is deeply committed to bringing together "town and gown" by setting up innovative university-community projects to address contemporary social issues. These projects have the potential to radically impact the lives of people in our community and improve the quality of life for all of us.



## Urban "Greening" in a Compact City



Source and copyright by Trey Ratcliff

**It's a simple idea but one that makes a lot of sense in the context of protecting the environment. If we really want to "green" our cities, we should cover our buildings with vegetation.**



Source and copyright by ArchSD

"Hong Kong is a vertical city," says the Department of Geography's Professor JIM Chi-yun, who promotes urban greening through green roof and green wall initiatives. "There are lots of opportunities to create green walls here."

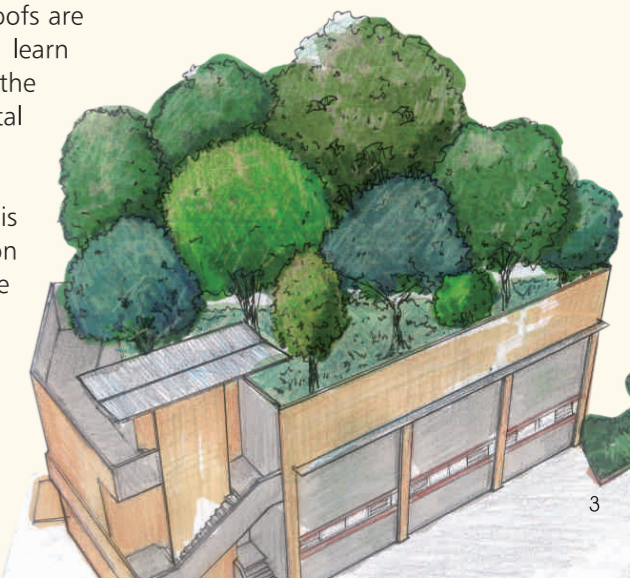
Professor JIM has been testing native plants best suited for vertical growth. He points out that super-dense cities like Hong Kong don't leave much room for greenery. Green facades and sidewalls, however, don't take up much real estate and they look attractive, too. The concrete, steel and glass towers that dominate central business districts have created a craving for visibly verdant sights, and an external wall of ferns and mosses on an 80-storey skyscraper not only looks good but is kinder to the environment.

The advantages of green roofs and green walls are plentiful. Plants on green roofs and walls absorb dust particles and harmful air pollutants, which greatly improves the surrounding air quality. Seen from above and the side, green roofs and walls offer a picturesque panorama for nearby residents, office workers and pedestrians. There is also an educational angle if school roofs are "greened". Students can learn about natural habitats and the importance of environmental protection.

Another major benefit to this kind of project is the impact on temperatures inside the buildings. Green roofs and walls can substantially lower the temperatures of rooms within. Cooler rooms mean air conditioners can be

turned down to save on electricity. "Our research using the roof of the Runme Shaw Building at HKU shows that a green roof can lower the temperature of inside rooms by about 2 °C," Professor JIM says.

The idea seems to be catching on with other groups in Hong Kong. For





Source and copyright by ArchSD



Professor JIM's consultancy work, he has been invited by China Light and Power Holdings Limited to devise a pioneering ecological design for Sky Woodland in Kowloon, which will involve planting shrubs on the roof

of a CLP building. And he is also working with the MTR Corporation to place plants on a 2000 square metre roof, one of the largest in Hong Kong, at Tai Po station at the end of 2009. These research projects

will be used to gauge the plants' cooling effect on roofs and walls and the overall benefits of urban greening on reducing heat within the environment.

## Road to an Elder-friendly Community



▲ From left: Mr Eason CHAN, popular local artist; Prof FOK Tai Fai, Dean of the Faculty of Medicine, CUHK; Mr Winfried ENGELBRECHT-BRESGES, CEO of the Hong Kong Jockey Club; Mr Franklin WONG, Director of Broadcasting; Prof Ian HOLLIDAY, Dean of Faculty of Social Sciences, HKU; and Prof Jean WOO, Projector Director of CADENZA officiated at the launch ceremony of the CADENZA 18-District Programme.

**In collaboration with The Hong Kong Jockey Club Charities Trust, and the Faculty of Medicine of The Chinese University of Hong Kong, our Faculty is committed to creating a better living environment for our community by promoting positive attitudes toward senior citizens via CADENZA: A Jockey Club Initiative for Seniors.**

CADENZA also fosters to improve the quality of care and quality of life for Hong Kong's older population. This will be accomplished through nurturing academic leadership in social gerontology and adopting an evidence-based approach in innovative community projects and public awareness programmes. Research is a key element of CADENZA in identifying the changing needs of older people and advancing gerontological knowledge for our society. The research projects focus on six major themes, namely

health promotion and maintenance; health and social services in Hong Kong; the living environment; financial and legal issues; quality of life and quality of dying; and age disparities.

In addition, CADENZA has brought together young academics as "CADENZA Fellows" from a variety of disciplines to undertake social gerontology research. For instance, by analysing the relationship between hot weather warnings and mortality rates, CADENZA alerted the general public to the dangers of hot temperatures for older persons and made some practical suggestions for dealing with this type of adverse weather condition. To address the changing needs of older people, a research on "choice of care in an old age home or one's own home" has identified the risk factors associated with choice of care in an old age home from both the elder's and the carer's perspectives, and proposed ways to help ageing in community. The publication, *"How Well are Seniors in Hong Kong Doing? An International Comparison"*, widely



solicited by policy makers, academia and service providers, showed that the standard of living of Hong Kong seniors is comparable to that of their counterparts in other developed countries.

CADENZA also launched a monthly public education enterprise called CADENZA 18-District Programme in January 2009 with the support of the District Councils. The aim is to promote positive ageing and equip the soon-to-be-old with knowledge that can help them continue to live a vigorous life through a range of

interactive events and activities.

The contents of the public education programme, which will run until June 2010, will cover health and social services to legal matters, financial issues and the general quality of life. The Faculty has enlisted the support of celebrities and professionals from these fields who will give talks at the various events, encouraging people approaching their golden years to find out how to better prepare for ageing and how to address the opportunities and challenges they

will face in the second half of their lives. At the same time, the plan is to encourage the general public to contribute by helping senior citizens to age positively.

The CADENZA 18-District Programme and community research studies are just the curtain raiser. "We hope to cultivate a new concept of ageing through these initiatives and promote a more positive image of ageing and the elderly," says Mr Peter CHAN, Chief Project Administrator of CADENZA.

## Learning Support for Dyslexic Children



**The Faculty's care extends to the next generation.** Children with learning difficulties in reading and writing (i.e. dyslexia) often risk failure, not just academically but socially and emotionally. For a child to overcome dyslexia, there needs to be close collaboration between medical, social and educational professionals working in a transdisciplinary team. However, for many years, numerous Hong

Kong children and parents have suffered needlessly due to poor awareness of the condition and a lack of professional support.

Professor Connie HO Suk-han of the Department of Psychology is committed to helping children living with dyslexia. With funding from The Hong Kong Jockey Club Charities Trust, and in collaboration with the Education Bureau and a number of NGOs, Professor HO has helped



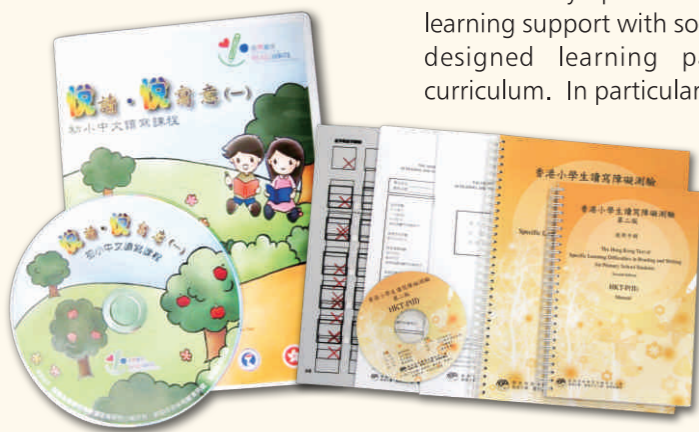
launch a scheme called the "READ & WRITE: A Jockey Club Learning Support Network." The aim is to identify children with dyslexia at an early age and provide support that will enable them to overcome their difficulties and develop to their potential.

"Around 10% of the Hong Kong school population may have hidden learning difficulties in reading and writing. Without a comprehensive and standardized assessment tool, it is difficult for us to intervene at an early stage," Professor HO says. In response to this problem, the READ & WRITE Team has developed several screening and assessment instruments [e.g., *The Hong Kong Test of Specific Learning Difficulties in Reading and Writing for Primary School Students (Second Edition)*] for school teachers and psychologists to identify students with dyslexia.

Once students have been identified, schools may provide appropriate learning support with some specially-designed learning packages or curriculum. In particular, the READ &

WRITE Team has developed the Tiered Intervention Curriculum, which is the first comprehensive evidence-based language-learning curriculum for Chinese dyslexic children. The curriculum and assessment materials have proven to be very effective in improving children's literacy-related skills. In line with the new funding mode of the Education Bureau, the project members hope that more dyslexic children in the community will benefit from the wide application of this intervention model.

To enhance public awareness about specific learning difficulties and the pressing needs of dyslexic children, the team has also run a series of seminars and training courses aimed at teachers and educational professionals. These sessions also focus on disseminating effective ways of teaching students using the curriculum materials and learning packages that the READ & WRITE team has developed.

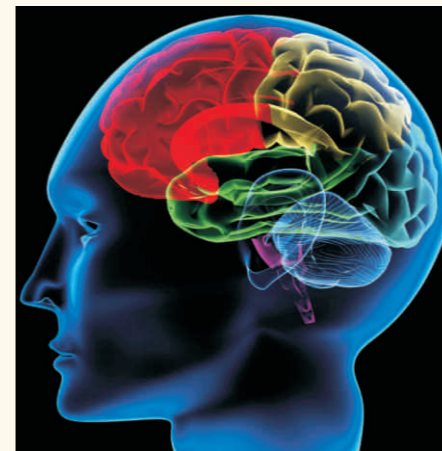


▲ The Tiered Intervention Package (left) and The Hong Kong Test of Specific Learning Difficulties in Reading and Writing for Primary School Students - Second Edition (right)



▲ The Read & Write Team being interviewed at the Commerical Radio

## Amazing Journey Inside the Human Brain



**Neuropsychology has become a burgeoning field of study, and advancements in brain imaging technology have added impetus to the research.**

Functional magnetic resonance imaging (fMRI) is an advanced neuroimaging technique that allows us to monitor how the brain controls mental processes and influences behaviours in our daily lives. The insights gained have a profound implication for a range of social and economic issues.

Domestic violence often makes for sensational news headlines but studies on the brains of perpetrators are extremely limited. Using fMRI, Professor Tatia LEE Mei-chun and her team in the Department of Psychology have made the first attempts to identify possible biological factors underlying the aggressive behaviour of spousal abusers. Findings show that abusers are often hypersensitive to mildly aggressive, but that their brain mechanisms for regulating such impulses are not very effective. This suggests that functional brain abnormality may contribute, at least in part, to impulsive aggression in domestic settings. From the data, intervention protocols that effect to



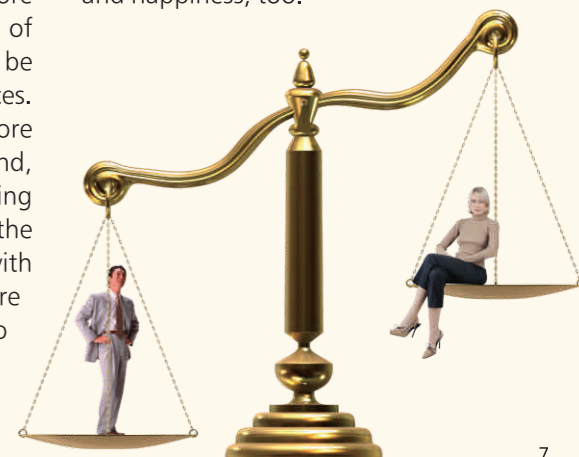
tone down batterers' emotional reaction and at the same time boost the efficiency of brain mechanisms for impulse regulation have been devised. These protocols are under stringent experimentation to verify their efficacy and generalizability.

Turning to another timely issue, we have all become very concerned about the excessive risk-taking practices engaged by investment banks following the financial tsunami that unfolded in 2008. Historically, many "big gamblers" in financial scandals are men rather than women, which begs the question, is there a biological basis for the different risk-taking attitudes among men and women? In another fMRI study, Professor LEE identified sex-related influences that modulate brain activity during decision-making processes involving risk. Specifically, it was observed that women, relative to men, spent more time considering the implications of risky decisions and tended to be more sensitive to the consequences. As a result, they are usually more risk-averse. Men, on the other hand, appeared more risk prone, focusing more on the rewards of risk and the positive experience that comes with the reward. More exciting data are on the pipeline. The next step is to construct a risk-taking decision making model that guides our

everyday decision making.

From these illustrations, it is clear that unlocking the mysteries of the brain can contribute to the mental well being of society. At a macroscopic level, for example, new intervention strategies targeting the biological underpinnings of domestic violence could be developed and implemented to complement current treatment for spousal abusers. At a microscopic level, people may re-appraise their "instincts" when making investment decisions, and think twice before taking risks. Do our instincts represent an accurate appraisal of the potential losses and gains, or are they merely the results of certain biological inclinations inside your mind?

The wealth of knowledge offered by neuropsychological studies could help people to accumulate wealth and happiness, too.



# Social Sciences Research Centre



The Social Sciences Research Centre (SSRC) (社會科學研究中心) was established in January 1987 as a centre of teaching and learning within the Faculty of Social Sciences. Over the last 20 years, the Centre has grown from just 3 to nearly 20 full-time staff and a large number of part-time staff.

It has fulfilled its mission to be a supplier of world-class, independent and innovative social and interdisciplinary research services in Hong Kong, serving the Faculty of Social Sciences, The University of Hong Kong, the HKSAR Government and the broader community. It has undertaken world-class research on telephone survey methodology in Asia and world-class policy research in Hong Kong and maximized knowledge transfer through the supply of research services, the application of these services to important policy issues and the dissemination of research findings to the academic and broader community.

This has been achieved through developing world-class research facilities, including:

- A Telephone Survey Unit with 42 Computer-aided Telephone Interviewing (CATI) workstations and interviewers capable of interviewing in English, Cantonese and Putonghua in Hong Kong, Mainland China, Singapore, Taiwan and other Asian cities and countries. The Director was responsible for creating the first bilingual (English and Chinese) CATI system in the world, which has enabled high quality telephone surveys in the University;
- A Form Survey Unit with a computer-aided form design and processing system capable of handling

thousands of forms per day (up to double-sided A3 forms) in paper or fax-back format;

- A Field Interviewing Team, capable of handling household, business and street intercept interviews; and
- A Web Survey Unit to handle online surveys for email linked, identity linked, password protected or open surveys.

The facilities noted above, together with our well-qualified staff and the University's world-class library, enable the Centre to provide a wide range of research services at the highest level including:

- Qualitative research including desk research, focus groups, personal interviews, household sophisticated computer software (NVIVO) to allow full coding, analysis and tabulation;
- Quantitative research including questionnaire design, data collection, statistical analysis and statistical forecasts using sophisticated computer software (SPSS, JMP, R, Stata, SAS and custom written); and



Colleagues of the Social Sciences Research Centre



- Independent report writing utilizing both the qualitative and quantitative research services mentioned above.

The Centre is now widely recognized as an excellent social research institute in Hong Kong with a scope of service that covers Hong Kong, Mainland China, Taiwan, Singapore and Malaysia. For telephone survey methodology, the Centre is known as a leader in Asia.

The Centre has produced more than 100 research reports since 1994, which illustrates the significant impact of the Centre on Hong Kong government departments, bureaux, statutory bodies, NGOs, companies and the University itself.

The Centre continues to make a significant contribution to training the next generation of researchers through quantitative research methods courses at the Graduate School and a course entitled Social Science Research Methods at the Summer School, which has obtained continuous RGC grants over the last ten years and is now under the leadership of the Faculty.

Nearly all the projects undertaken involve research findings in the public domain, which have yielded large-scale knowledge transfer. An excellent example of knowledge transfer is the Centre's estimation of the number of marchers on July 1, 2004. This work showed

methodological innovation to solve a real issue in Hong Kong. This was the very first example anywhere in the world of a verifiable estimation of the number of participants on a march. It eliminated political dispute over the numbers and transformed the debate into one about methodology. For the first time, verification became possible.

We encourage anyone interested in commissioning research or making use of our research services to contact us at [hkussrc@hku.hk](mailto:hkussrc@hku.hk) or visiting our website at [www.ssrc.hku.hk](http://www.ssrc.hku.hk).



**Professor John BACON-SHONE** (白景崇教授)  
Director, Social Sciences Research Centre

## A Golden Rendezvous to Remember



The following post-reunion dinner feedback from one participant aptly summaries what an unforgettable evening we had:

"It was indeed heartwarming to meet so many of you last night, and revive the beautiful memories which I have dearly treasured throughout the last 20 years."

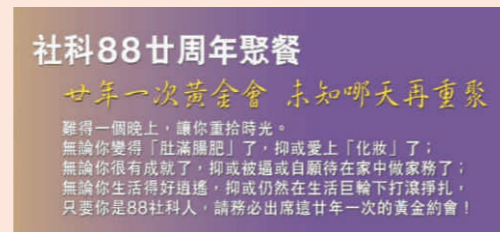
A Reunion Dinner in celebration of the 20<sup>th</sup> Anniversary of the Class of 1988 Social Sciences was held on October 17, 2008 at the World Trade Centre Club. Over 60 alumni from the Faculty of Social Sciences attended a fun-filled evening with good food, games, a lucky draw and a special edition of MTV with "now and then" photos home-made by a classmate, now a TV scriptwriter.

The idea for organising such a reunion sprang from the Faculty's 40<sup>th</sup> Anniversary back in 2007. On the surface, it took a year to organise the event, but actually the Organising Committee enjoyed monthly meetings that could be regarded as mini reunions. One time, a classmate's home was taken over as a "call centre" to reconnect long-lost friends.

We were honored to have with us three teachers from our good old days: Professor Edward CHEN Kwan-yiu (Economics), Dr Harry HUI Chi-chiu (Psychology) and Mr Edward CHIU (Accounting).

One happy coincidence was that the Geography Class of 1978 was celebrating its 30<sup>th</sup> Anniversary that evening next door. Since Geography now is under the Faculty of Social Sciences, we joined together to have a big "family" group photo towards the end of our events.

### Class of 1988 Social Sciences Reunion Organising Committee



▲ Together with Geography Alumni

## Social Sciences Class of 1974



We graduated from HKU over 30 years ago. Through industry and persistence, our classmates have either become successful businessmen, top professionals, acclaimed academics, proficient administrators or high-ranking civil servants. They should be proud to have contributed to the growth and development of Hong Kong and the well-being of the people at large. In view of the fact that our fellow graduates possess a wealth of knowledge and experts in diversified areas, not to mention excellent social and business networks, we see it as meaningful to organise re-union activities among ourselves largely to enable our classmates to meet and recall happy days at HKU, network and build stronger ties locally and overseas and provide for ourselves an opportunity for sharing.

We had our first reunion dinner a few years ago. The number of classmates joining has now risen to three tables. We normally organize reunions three to four times a year and we have all grown much closer as a result of these events.

You may wish to know that our class of 1974 is planning to celebrate its 35<sup>th</sup> anniversary in late 2009 and we wish as many of you as possible can join us. For details, please contact our coordinators:

- Mr Nelson WONG Ping-sum (黃炳森先生)  
(Mobile 9629 5667; Email: nelson\_pswong@yahoo.com.hk)
- Ms Elizabete FONG (馮青薇女士)  
(Mobile 9476 3738; Email: elizabete.fong@gmail.com)

**Mr Nelson WONG (黃炳森先生)**  
Class of 1974 Social Sciences Reunion Organising Committee Member

## Book Launch

Being a psychologist, I perceive my primary role as bringing peace to a person's inner world. However, as my experience accumulates, I realize that social harmony is indeed the cornerstone of our inner tranquility. Interpersonal conflict must be resolved before a person can fully enjoy his existence. I therefore became a mediator, trying my best to achieve win-win resolutions for interpersonal disputes. A satisfying settlement can bring peace not just to the parties involved, but also to their significant others.

Besides providing mediation service, I also hold Conflict Management and Mediation courses and seminars for people in various professions, such as headmasters, teachers, social workers, lawyers, engineers, customer service workers, and even police. These are the people who have to work with conflict every day, but they lack the expertise and skills to do so. I give talks to parents too, so that they know how to manage conflict with their children. I now see my role as a farmer, sowing the seeds of Peace and Harmony as much as I can, so that our world may become a more enjoyable place to live.

Interpersonal stress has led to low morale and job burnout problems in teachers. This book discusses various strategies and techniques for managing interpersonal conflict in the school setting. It is divided into three sections: (1) managing conflict with parents, (2) managing conflict with colleagues, and (3) managing conflict with students. Case studies are used to illustrate the essential concepts and techniques. Through the introduction of conflict management knowledge to teachers, I hope they can improve their job satisfaction and their teaching efficacy.

**Ms Beatrice HUNG Kit-may (洪傑美女士)**  
BSocSc (Psychology and Statistics) (1979); MPhil (1983)



書名：校園衝突處理篇  
作者：洪傑美（註冊心理學家）  
出版機構：香港小童群益會—  
校園危機支援計劃

## Stay in touch

We would like to hear from all alumni, especially those who have not been in contact for some time. We wish to take this opportunity to invite you to share with the Faculty the contact details of local or overseas alumni with whom you are in touch. Please complete and return the following form to the Faculty so that we can keep them informed of the most up-to-date developments and activities of the Faculty and the University.

Fax: 2549 3341 / E-mail: socsc@hku.hk

### Part I : Your Information

Name : \_\_\_\_\_  
(Surname) (Given Name)  
Chinese Name : \_\_\_\_\_  
Sex : M/F  
Contact Phone No. : \_\_\_\_\_  
E-mail: \_\_\_\_\_  
Year of Graduation: \_\_\_\_\_  
Degree Awarded: \_\_\_\_\_

### Part II: Other Alumni's Information

Name : \_\_\_\_\_  
(Surname) (Given Name)  
Chinese Name : \_\_\_\_\_  
Sex : M/F  
Contact Phone No. : \_\_\_\_\_  
E-mail: \_\_\_\_\_  
Correspondence Address: \_\_\_\_\_  
Year of Graduation: \_\_\_\_\_  
Degree Awarded: \_\_\_\_\_

## STUDENT

### GLOBAL VISION PROGRAMME



The South African Semester was concluded successfully in November 2008. We were pleased to have the support of the South African Consulate General in arranging the exciting events. A kick off dinner was organized on Lantau Island, followed by a movie night, wine tasting and a roundtable on the South Africa-China Relationship by Mr Christopher BURKE, Centre for Chinese Studies, Stellenbosch University; and Dr Adams BODOMO, African Studies Programme Coordinator, School of Humanities, HKU. One of South Africa's best-loved performers, PJ Powers, was invited to give two live concerts for our students and staff. Photo albums are available at [www.hku.hk/socsc/globalvision/sa](http://www.hku.hk/socsc/globalvision/sa).



Moving on to this semester, Japan was chosen to be the theme country. Following the Japanese dinner in February, we were honoured to have the Consul General of Japan, Mr Shigekazu SATO, to talk with our students about Japan's "soft power". Other exciting activities like sake tasting and ikebana workshop (floral arrangement) throughout the second semester had attracted many enthusiastic participants. Special thanks to the Consul-General of Japan in Hong Kong and Dr Serena YANG for their advice and support to make the Japanese Semester a success. Photo albums are available at [www.hku.hk/socsc/globalvision/japan](http://www.hku.hk/socsc/globalvision/japan).





Throughout the past 40 years, the executive committee members of the Social Sciences Society, HKUSU have devoted themselves to serving all undergraduates studying in the Faculty of Social Sciences. Witnessing its 41<sup>st</sup> anniversary, it is our honour to follow the pioneers and continue the legacy.

This year, besides continuing the work of previous committees, we would like to try something fresh to make our Society an even better one. That's why we have a new theme — "Socienist: Be Active, Be Innovative" — this year. As social sciences students, we are willing to be pioneers, too, to question stereotypical ideas, challenge traditions and explore how things can be done differently. Our inauguration party, which we held in mid-January, demonstrated our determination to fulfill our promises.

We have established two major goals for our term of office. Externally, we would like to encourage students to become more involved in social affairs. Looking from a broader view, we hope our students can be more aware of both the local and global community and to actively participate in such events. Internally, by organizing various functions and providing all kinds of welfare, we hope to facilitate mutual understanding among our members. If you want to know more, simply go to KKLG111, our society room, to have chat with us.

And of course, it is very important for us to keep in close contact with our faculty. We believe that communication leads to better understanding and ultimately both the faculty and our members will benefit. We hope to have more collaborations on the functions, such as the Dean's forum in mid-March.

What we need in the future is your support, and with close cooperation, we believe that together we can make anything happen!

**Mr Donald LAM Yun-wah (林潤華先生)**  
Chairman  
Social Sciences Society, HKUSU  
Session 2009



# BURMA WEEK

A modest attempt to awaken students to the reality of Burma



On the last night of our fundraiser called Burma Week, we sat huddled together counting the money. The mood was cautiously optimistic. We did not want to have very high expectations. I held the calculator in my hand and fed in the numbers as my friends called them out. The figure touched \$5,000 and a sense of euphoria overcame us. To many, \$5,000 might seem disappointingly low, considering the fundraiser lasted a week. But for us, it represented a small triumph in a place where, prior to Burma Week, few students would have been able to locate the country on a map.



In the summer of 2008 a group of 10 students from HKU, nine from the UK and two from the USA taught English to Burmese refugees along the Thai – Burma border as part of the Migrant Outreach Education Initiative (MOEI), initiated by Faculty of Social Sciences, HKU. After this experience, indifference toward Burma was no longer an option. Several e-mails, phone calls and meetings later, Burma Week came into being.

To raise funds, we decided to sell products made by Burmese women living along the Thai – Burma border who had been tortured by the military government in Burma. It made us happy every time someone decided to drop a few dollars into the donation box, yet the joy of people reading our display boards and asking us questions about our students in Burma surpassed the happiness of a full donation box. Raising awareness was one of our key aims and after this week, we feel we have managed to make people much more aware.

The day of the forum was probably the most overwhelming in terms of student response. We had a full audience for over an hour and a half, which in HKU is a rare occurrence. Being able to spend some time with the Burmese students at HKU during this week and hear their stories was also something each of us appreciated immensely.

The response to Burma Week was far more positive than we expected. In the near future we hope to set up a Burma Concern Group and widen the scope of awareness and fundraising activities on campus. In addition, since the MOEI programme along the Thai – Burma border will take place every year, we should see a rise in the number of students joining up, which will sustain the group after we have graduated.

**Miss Anushri Kanakaria ALVA**  
BSocSc II  
Organising Committee Member of Burma Week





# EVENTS SPOTLIGHT



**CADENZA Symposium 2008: Successful Ageing**  
October 11-12, 2008



**Public Forum on the 2008 US Presidential Election**  
October 29, 2008

**Managing World Cities Inaugural Conference**  
October 23-25, 2008



**3<sup>rd</sup> Asia Pacific Regional Conference of International Association for Suicide Prevention**  
October 31 - November 3, 2008



**「改革開放三十年後」系列講座 Public Lecture Series on "China's Reform: After 30 Years"**

- 中國的農民與土地問題  
October 25, 2008  
講者：溫鐵軍教授，中國人民大學農業與農村發展學院院長
- 奧巴馬與中美關係  
November 22, 2008  
講者：黃平教授，中國社會科學院美國研究所所長
- 中國歷史城市的保護與復興  
December 19, 2008  
講者：趙辰教授，南京大學建築學院副院長
- 中國「東突」分裂主義的由來與發展  
January 17, 2009  
講者：厲聲教授，中國社會科學院中國邊疆史地研究中心主任



**SC Fan Memorial Lecture — West Falling, East Rising? How New Administrations in the US and EU Face a 500-Year Challenge**  
November 17, 2008  
Speaker: Professor Timothy GARTON ASH  
Professor of European Studies, University of Oxford  
Senior Fellow, Hoover Institution, Stanford University

**International Conference on "Building Green Partnership for Sustainable Development: The Collaboration of Green NGOs, Businesses"**  
November 29-30, 2008



**Global Citizenship Public Lecture: My Work with the Chinese Community in Northern Ireland**  
October 28, 2008  
Speaker: Ms Anna LO  
The first elected HK-Chinese Member of Parliament in the UK



**Conference on "Strengthening Hong Kong's Families: Embracing a Holistic Family Approach in Formulating Social Policy and Providing Social Services"**  
December 3, 2008



**Symposium on "Positioning University in the Globalized World: Changing Governance and Coping Strategies in Asia"**  
December 10-11, 2008

**Forum on Trans-disciplinary Perspective on Maintenance**

December 17, 2008  
Speaker: The Honorable Judge Bebe CHU  
Judge-in-charge, Family Court of Hong Kong



**Symposium on "Spirituality and Clinical Social Work: Education and Practice"**

January 15, 2009  
Speaker: Professor Carolyn JACOBS  
Dean and Elizabeth Marting Treuhaft Professor  
School for Social Work, Smith College, USA

**Distinguished Talk at UNICEF's New York Headquarter — "Managing Rapid Socio-Economic and Demographic Changes: Reforming Social Welfare and Social Protection Strategies in East Asia"**

February 17, 2009  
Speaker: Professor Ka Ho MOK  
Associate Dean, Faculty of Social Sciences, HKU



**Conference on Infrastructure Regulation: What Works, Why and How Do We Know?**

February 26-27, 2009

**Brainstorming Workshop Series on How to Further Develop Hong Kong as a World City**

February 26 - April 1, 2009



In February-March 2009, a small team of colleagues from the Faculty facilitated a series of brainstorming workshops on "How to Further Develop Hong Kong as a World City". The workshops attracted around 50 participants to debate five core themes: creative and knowledge economy; international connectivity; quality of life; talents; and public service delivery. On April 1, 2009, Financial Secretary Mr John C Tsang attended a closing session at which broad themes generated by the brainstorming workshops were further discussed. The Faculty's report will feed into a Government review of Brand Hong Kong.



**Service-learning Trip — Transforming via Resilience and Nurturance: Servicing Communities & Empowering Neighborhood of the Sichuan 512 Disaster (TRANSCEND)**

March 4-7, 2009



In response to the devastating 512 Sichuan Earthquake, the Faculty of Social Sciences, HKU has organized a service-learning programme, namely, Project TRANSCEND. It aims to promote global citizenship and sense of community through the real cause of disaster relief work and to equip social worker students to handle crisis, trauma and loss.

**Dialogue with Warren Mok: My Musical World**

March 12, 2009



**Global Citizenship Public Lecture: The London G20 Summit - April 2009**

March 25, 2009  
Speaker: Rt Hon Jim MURPHY  
Secretary of State for Scotland

## DONATIONS (From September 2008 – January 2009)

Donor	Recipient	Nature	Amount (HK\$)
Dr Rainbow HO Tin-hung	Centre on Behavioral Health	Activities of the Centre	18,000
Ms Grace PAU Yi-kum		Activities of the Centre	15,000
Dr NG Siu-kai		Sichuan Project	10,000
Professor Jonathan SHAM Shun-tong		Sichuan Project	900,000
Dr TAI Kin-shing		Sichuan Project	20,000
Mr Gabriel YU Chi-ming		Sichuan Project	1,000,000
Anonymous	Department of Geography	CP Lo Scholarship	10,000
Dr FUNG Tung		CP Lo Scholarship	10,000
Mrs LO CHAN Seen-lim		CP Lo Scholarship	25,000
Dr Winnie TANG		CP Lo Scholarship	10,000
Anonymous	Faculty of Social Sciences	Research Activities in Clinical Neuropsychology and Applied Neuroscience	300,000
Mr Peter LEE Ka-kit	HKJC Centre for Suicide Research and Prevention	"Peter Lee - Care for Suicide Survivor" Project	1,320,000

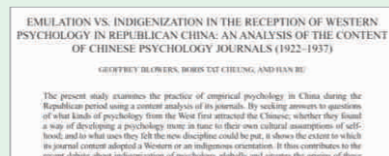
## RECENT PUBLICATIONS (From October 2008 – January 2009)



China's Role in the Evolution of Southeast Asian Regional Organizations  
Author: ASTARITA, C.  
Journal: China Perspectives



Correlates of In-Law Conflict and Intimate Partner Violence Against Chinese Pregnant Women in Hong Kong  
Authors: CHAN, K.L., TIWARI, A., FONG, D.Y.T., LEUNG, W.C.B., DOUGLAS, A. & HO, P.C.  
Journal: Journal of Interpersonal Violence



Emulation vs. Indigenization in the Reception of Western Psychology in Republican China: An Analysis of the Content of Chinese Psychology Journals (1922-1937)  
Authors: BLOWERS, G.H., CHEUNG, B.T. & HAN, R.  
Journal: Journal of the History of the Behavioral Sciences



Task- and Self-Related Pathways to Deep Learning: The Mediating Role of Achievement Goals, Classroom Attentiveness, and Group Participation  
Authors: LAU, S., LIEM, A.D. & NIE, Y.  
Journal: British Journal of Educational Psychology



The Impact of Rapid Rail Transit on the Suburb Communities: A Case Study of West Rail in Hong Kong  
Author: LOO, P.Y.B.  
Journal: Habitat International



Tourism as a Sustainable Livelihood Strategy  
Authors: TAO, T.C.H. & WALL, G.  
Journal: Tourism Management



Evaluating the Effectiveness of Barrier Installation for Preventing Railway Suicides in Hong Kong  
Authors: LAW, C.K., YIP, P.S.F., CHAN, W.S.C., FU, K.W., WONG, P.W.C. & LAW, Y. W.  
Journal: Journal of Affective Disorders



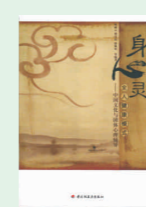
Feature Integration Theory Revisited: Dissociating Feature Detection and Attentional Guidance in Visual Search  
Authors: CHAN, L.K.H. & HAYWARD, W.G.  
Journal: Journal of Experimental Psychology: Human Perception and Performance



Industrial Heritage: Valorising the Spatial-Temporal Dynamics of Another Hong Kong Story  
Authors: LEUNG, M.W.H. & SOYEZ, D.  
Journal: International Journal of Heritage Studies



台灣學者對明朝海外貿易政策的解讀 — 評〈來自海洋的挑戰 — 明代海貿政策演變研究〉  
作者：錢江  
期刊：海交史研究



身心靈全人健康模式 — 中國文化與團體心理輔導  
作者：陳麗雲、樊富民、梁佩如  
出版：中國輕工業出版社



香港將軍：何世禮  
作者：鄭宏泰、黃紹倫  
出版：三聯書店（香港）有限公司



境外實務工作訓練的檢視與探索 — 知而行·行而知：  
香港社會工作教育的反思與探索  
作者：范梅英、戴幼兒、徐永德  
出版：中文大學出版社



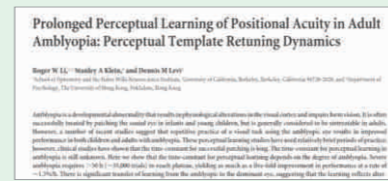
Knowledge is a Dangerous Thing: Authority Relations, Ideological Conservatism, and Creativity in Confucian-Heritage Cultures  
Authors: HO, D.Y.F. & HO, R.T.H.  
Journal: Journal of the Theory of Social Behaviour



Management of Challenges of Conjugal Loss Among Chinese Widowers: An Exploratory Study  
Authors: WOO, I.M.H., CHAN, C.L.W., CHOW, A.Y.M. & HO, R.T.H.  
Journal: Omega: Journal of Death and Dying



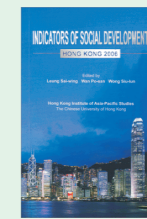
Perception of Image Motion During Head Movement  
Authors: LI, L., ADELSTEIN, B.D. & ELLIS, S.R.  
Journal: ACM Transactions on Applied Perception



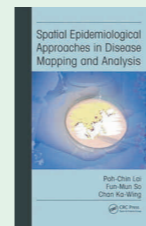
Prolonged Perceptual Learning of Positional Acuity in Adult Amblyopia: Perceptual Template Retuning Dynamics  
Authors: LI, R. W., KLEIN, S.A. & LEVI, D.M.  
Journal: Journal of Neuroscience



Psychological Resilience and Dysfunction Among Hospitalized Survivors of the SARS Epidemic in Hong Kong: A Latent Class Approach  
Authors: BONANNO, G.A., HO, M.Y., CHAN, J., KWONG, R.S.Y., CHEUNG, C.K.Y., WONG, V.C.W. & KAPLAN, R.M.  
Journal: Journal of Health Psychology



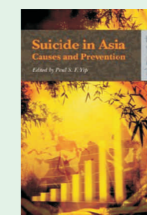
Social Trends: A Comparison of Subjective and Objective Indicators - Indicators of Social Development: Hong Kong 2006  
Authors: ZHENG, V. & WONG, S.L.  
Publisher: Hong Kong Institute of Asia-Pacific Studies, The Chinese University of Hong Kong



Spatial Epidemiological Approaches in Disease Mapping and Analysis  
Authors: LAI, P.C., SO, F.M. & CHAN, K.W.  
Publisher: CRC Press, Taylor & Francis Group



Studying Public Policy  
Authors: HOWLETT, M., RAMESH, M. & PERL, A.  
Publisher: Oxford University Press



Suicide in Asia: Causes and Prevention  
Editor: TIP, P.S.F.  
Publisher: Hong Kong University Press

# CONGRATULATIONS

## Alumni

### Honours



**Dr The Hon Rita FAN HSU Lai-tai,**  
GBM, GBS, CBE, JP  
(范徐麗泰博士)  
MSocSc (1973)  
Doctor of Social Sciences  
*honoris causa*, HKU



**Dr Robert HO Hung-ngai**  
(何鴻毅博士)  
Doctor of Social Sciences  
*honoris causa*, HKU



**Mr Anthony TSUI Tin-yau, MBE**  
(徐天佑先生)  
BSocSc (1970)  
Member of the Order of  
the British Empire (MBE) 2009



**Dr LAM Shan-muk**  
(林山木博士)  
Doctor of Social Sciences  
*honoris causa*, HKU



**Dr MOK Hing-yiu**  
(莫慶堯醫生)  
Doctor of Social Sciences  
*honoris causa*, HKU

### Award



**Mr Elvin WONG Chi-chung**  
(黃志淙先生)  
MPhil (1997)

Mr WONG was honoured as one of the 40 local heroes by *Time Out* Magazine in its 40<sup>th</sup> anniversary celebratory issue.

### Public Appointment



**Ms AU King-chi**  
(區璟智常任秘書長)  
BSocSc (1982)  
Permanent Secretary for Financial Services and  
the Treasury (Financial Services)

## Students

### Awards



**Mr Ivan WOO Mun-hong**  
(胡文康先生)  
MPhil (2007)  
Li Ka Shing Prize



**Dr YUEN Sung-lai**  
(袁崇禮博士)  
BSocSc (2000), MPhil (2003), PhD(2007)  
Li Ka Shing Prize

## Academic Staff

### Endowed Professorship



**Professor Tatia LEE Mei-chun**  
(李滙珍教授)  
Department of Psychology  
May Professorship in Neuropsychology

### Awards



**Dr Becky LOO Pui-ying**  
(盧佩瑩博士)  
Department of Geography  
Outstanding Teaching Award, HKU



**Professor David ZHANG Dian and  
Dr Harry LEE**  
(章典教授及李峯博士)  
Department of Geography  
Research Output Prize, HKU

### Promotions

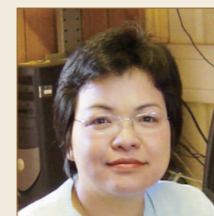


**Dr Doreen WEISENHAUS**  
(韋杜靈女士)  
Associate Professor  
Journalism and Media Studies Centre



**Professor David ZHANG Dian**  
(章典教授)  
Professor  
Department of Geography

### New Appointments



**Dr Ruby CHAU Chui-man**  
(周翠雯博士)  
Assistant Professor  
Department of Social Work and  
Social Administration



**Dr HE Hongming**  
(何洪鳴博士)  
Postdoctoral Fellow  
Department of Geography



**Dr Janet HSIAO Hui-wen**  
(蕭惠文博士)  
Assistant Professor  
Department of Psychology



**Dr Vivian LOU Weiqun**  
(樓瑋群博士)  
Assistant Professor  
Department of Social Work and  
Social Administration



**Dr Rosetta MUI Suet-ying**  
(梅雪瑩博士)  
Postdoctoral Fellow  
Department of Psychology



**Dr Samson TSE Shu-ki**  
(謝樹基博士)  
Associate Professor  
Department of Social Work and  
Social Administration



**Dr TSENG Chia-huei**  
(曾加蕙博士)  
Assistant Professor  
Department of Psychology



**Dr YAN Xiaojun**  
(閻小駿博士)  
Assistant Professor  
Department of Politics and  
Public Administration

# FORTHCOMING EVENTS

## April

### Distinguished Visitor Series - History and Philosophy of the Concept of Psychometric Validity

Speaker: Dr J. MICHELL  
School of Psychology, The University of Sydney  
Date: Apr 28, 2009  
Venue: KB624, Knowles Building, HKU  
Contact: Professor G.H. BLOWERS  
(Tel: 2859 2378; Email: blowers@hku.hk)



### Research Postgraduate Conference 2009

Date: Apr 25, 2009  
Venue: Main Building, HKU  
Contact: Miss Katie CHUNG  
(Tel: 2859 1182; Email: katiehkc@hku.hk;  
Website: www.hku.hk/socsc/rpc/2009)

## May

### Women Writing New Scripts: A Symposium on Asian Sexualities & Erotic Justice

Date: May 15-16, 2009  
Venue: Centre of Asian Studies, HKU  
Contact: Dr Petula HO  
(Tel: 2859 2091; Email: psyho@hku.hk)

### Unhealthy Governance: Securitising Infectious Diseases in Asia

Date: May 22-23, 2009  
Venue: Council Chamber, Meng Wah Complex, HKU  
Contact: Miss Teresa TSAI  
(Tel: 2859 2460; Email: ttsai@hku.hk)

### Conference on the Multidiscipline Approach to the Prevention of Domestic Violence

Date: May 27, 2009  
Venue: Rayson Huang Theatre, HKU  
Contact: Dr Edward CHAN  
(Tel: 2859 2077; Email: eklchan@hku.hk)

### Workshop on Working with Families in Conflict

Date: May 30, 2009  
Venue: HKU Family Institute  
Contact: Miss Irene AU YEUNG  
(Tel: 2859 5300; Email: hkufi@hku.hk)

### Conference on Mapping Civil Society in Hong Kong

Date: May 31-Jun 1, 2009  
Contact: Dr Rikkie AU  
(Email: rlkyeung@gmail.com)

## June

### International Symposium on "Migrant Entrepreneurship in the Chinese Diaspora"

Date: Jun 12, 2009  
Venue: The University of Hong Kong  
Contact: Dr K.E. KUAH-PEARCE  
(Email: kekuah@hku.hk)



### Undergraduate Summer Institute:

#### Asia as the Global Future

Date: Jun 21-Jul 19, 2009  
Venues: Hong Kong, Macau, Shanghai, Hangzhou and Seoul  
Contact: Miss Cynthia TAI  
(Tel: 2859 1183; Email: sumins@hku.hk;  
Website: www.hku.hk/socsc/si/2009)

### Symposium of "Thinking beyond the Concept of Advance Directives"

Date: Jun 22, 2009  
Venue: Rayson Huang Theatre, HKU  
Contact: Miss Carmen YIU  
(Tel: 2241 5524; Email: ageing@hku.hk)

## July

### Life Series for Elderly 2009: New Life in Hong Kong Study Camp

Date: Jul 7-9, 2009  
Venue: The University of Hong Kong  
Contact: Miss Carmen YIU  
(Tel: 2241 5524; Email: ageing@hku.hk)



### Postgraduate Summer School: Social Sciences Research Methods

Date: Jul 27-Aug 7, 2009  
Venue: The University of Hong Kong  
Contact: Miss Karen CHEUNG  
(Tel: 2241 5393; Email: ssrcm@hku.hk;  
Website: www.hku.hk/socsc/ssrm/2009)

## Sociologist

is published twice a year in Spring and Fall by the Faculty of Social Sciences, The University of Hong Kong. Electronic copies of *Sociologist* are available on the internet at [www.hku.hk/socsc/newsletters](http://www.hku.hk/socsc/newsletters). For hard copies of *Sociologist*, please e-mail us at [socsc@hku.hk](mailto:socsc@hku.hk).

The Faculty welcomes any form of contribution to *Sociologist*.

### Editor-in-Chief

Professor Ian HOLLIDAY, Dean  
(何立仁教授)

### Editor

Professor Ka Ho MOK, Associate Dean  
(莫家豪教授)

### Editorial Assistants

Mrs Amy TSANG (曾梁惠慈女士)  
Miss Vanessa SIT (薛曉霞小姐)  
Dr Tiffany YING (英倩網博士)  
Miss Nikki WONG (黃曉怡小姐)

### Graphic Design

Mr Tony LAM (林旋旋先生)  
Mr Piggy CHU (朱群海先生)

### The Faculty of Social Sciences

reserves the right to publish and edit any material submitted for publication. Views expressed in *Sociologist* by contributors do not necessarily represent those of the Faculty or the University.

### Faculty of Social Sciences

Room 401, Meng Wah Complex  
The University of Hong Kong  
Pokfulam Road, Hong Kong

Telephone: (852) 2859 1086  
Fax: (852) 2517 0806  
E-mail: [socsc@hku.hk](mailto:socsc@hku.hk)  
Website: [www.hku.hk/socsc](http://www.hku.hk/socsc)

All rights reserved.  
Spring 2009