

FALL ISSUE 2018



www.socsc.hku.hk

# Socien**tist**

社

科  
人

Are  
you  
Media?

Community  
Impact p.7-8



**Empowering Families to Face  
Challenges of Social Changes**



## DEAN'S MESSAGE



In this issue of the Societist, we feature the newest member of the Faculty, the Journalism and Media Studies Centre. The JMSC was founded in 1999 by Professor Ying Chan, who was the Director for most of its entirety. Under Ying's guidance, the JMSC started with a Masters of Journalism programme, and then in 2004, a Bachelor of Journalism programme was established. Over the last 20 years, it has developed a strong local and international reputation for academic contributions and professional engagement. Under the current Director, Professor Keith Richburg, the JMSC joined the Faculty of Social Sciences in 2017 as our sixth academic unit. The JMSC enhances our existing strengths in media studies and communication, we and look forward to collaborating in the years ahead.

One of the recent developments in the Faculty is our focus on three new research clusters; Mental Wellness, from brain to society; Contemporary China: social, political, and spatial transformation; and Cities 2050: urbanisation, sustainability, and migration. With these new clusters, we seek to build large-scale communities of scholarship with a focus on three key research areas in the Social Sciences. We'll be recruiting stellar researchers in each area, offering post-doctoral fellowships, and hosting world-class events. We'll also make sure that each cluster has the facilities that it needs to help staff become international leaders. Each group has an interdisciplinary focus and the potential to create significant real-world impact. We look forward to seeing these clusters achieve new heights in research over the next few years.

**Professor William Hayward**  
Dean of Social Sciences



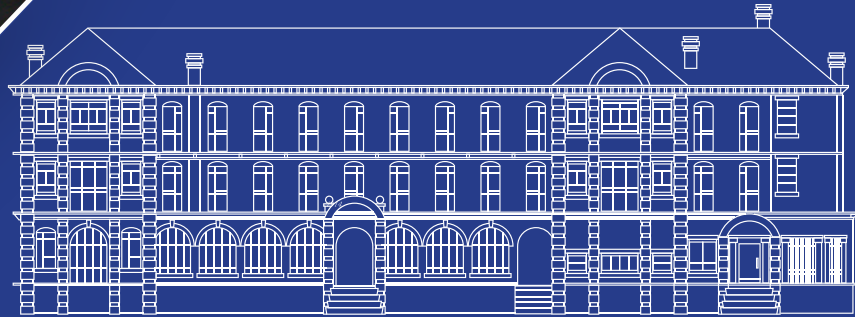


## DEPARTMENT AND CENTRE



**JM  
SC**  
HKU

Journalism and Media Studies Centre  
The University of Hong Kong  
香港大學新聞及傳媒研究中心  
<http://jmsc.hku.hk/>



### Journalism and Media Studies Centre

Since 1999, the Journalism and Media Studies Centre (JMSC) at The University of Hong Kong, Asia's premier university, has offered world-class professional journalism education.

The need for vibrant and professional news media has never been higher. At JMSC our experienced, highly skilled instructors and support staff enhance professional standards and bolster journalistic integrity through its teaching programmes, research, professional services and partnerships with major media outlets.

The JMSC curriculum is designed to produce graduates for all types of local, regional and international media organisations. The graduates' practice in English, Chinese and other languages. The English language teaching and the training unit are giving the next generation of reporters, editors and foreign correspondents the tools they need to be truly international representatives of the profession. Hong Kong's unique strategic location-as a cosmopolitan Asia-Pacific city and gateway to China, positions JMSC to train the next generation of journalists who will tell China's-and Asia's-story to the world.

From reporting and editing to digital technology and advanced audio-visual production and data analysis techniques, JMSC students develop convergent skills enabling them to operate comfortably in all aspects of the industry. JMSC provides in-depth coverage of specific local conditions by sharply focusing on regional and international media law, censorship in China, media ethics, the rise of disinformation and "fake news." This includes the role of social media and "citizen journalism," news literacy, and digital media entrepreneurship.

JMSC graduates are highly sought-after by employers and have been hired by international media organisations such as the BBC, Bloomberg, CNN and The New York Times, as well as local news organisations in Hong Kong and mainland China.

In addition to its main teaching programmes, the JMSC also offers professional short courses in media and journalism. Seminars and public forums are organised to explore critical issues confronting the news media. JMSC also hosts journalists and others to pursue book-writing projects and has hosted a series of book talks by the Centre's Writers-in-Residence.

The rise of We-Media has been a game-changer for news production, but it was not until several years ago that enough content was created in China to turn it into a




In China, the We-Media frenzy has rewritten the media landscape. China's web-savvy netizens enthusiastically claim they are We-Media content providers, posting extensively across a robust array of online social platforms. With a core of social and mobile communication, We-Media creators do not solely contribute to the news. They tend to provide a wide range of topics such as individual voices, personal stories, lifestyle, culture, healthcare, sport, technology and breaking news. As well as individuals, all kinds of social groups, associations, work units, private companies, state institutions and government departments have all picked up on this information trend. Suddenly but not unexpectedly, former journalists have transformed into We-Media content providers, while traditional media outlets fund high-profile We-Media to develop new storytelling formats, online communities and even markets.



It is a digital world that is erupting with new power and new game players, changing so fast it breaks current news and information models. In July 2018, an exposé on a WeChat public account disclosed the sale of defective vaccines produced by one of the country's pharmaceutical giants, Changchun Changsheng Biotechnology. Written by former journalists, the investigative article titled **《疫苗之王》** ("King of Vaccines") revealed that the vaccine manufacturer built its business empire by supplying substandard vaccines to infants. Months went by without any investigation into the matter, and the government ordered a media blackout.

The We-Media article went viral. It was viewed over 100,000 times and later reposted across WeChat. Angry netizens sounded off their concerns about state corruption and the country's ineffective regulatory system. Shortly afterwards, the company executives and others involved were detained by police, although that development barely quelled anger. We-Media remarkably challenged the dominant narrative that existed in mainstream news.



**weiboSCOPE**  
Journalism and Media Studies Centre

Original user id: [REDACTED]  
Date: 2018-07-22 10:43:46  
Censored time:: 2018-07-22 11:29:49.668152

Content:  
【鲁爷：疫苗之王】  
Image:

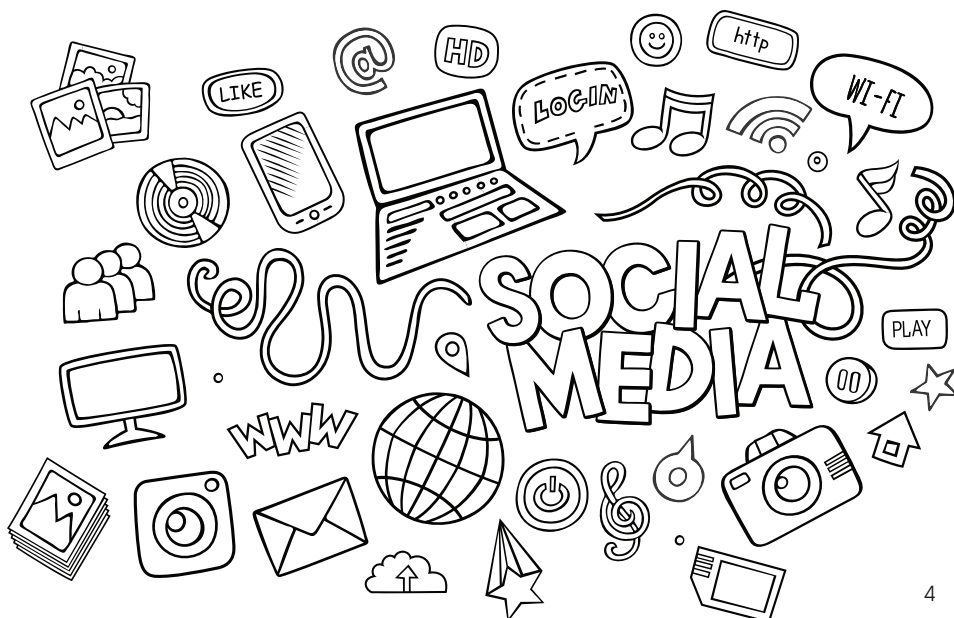
疫苗之王

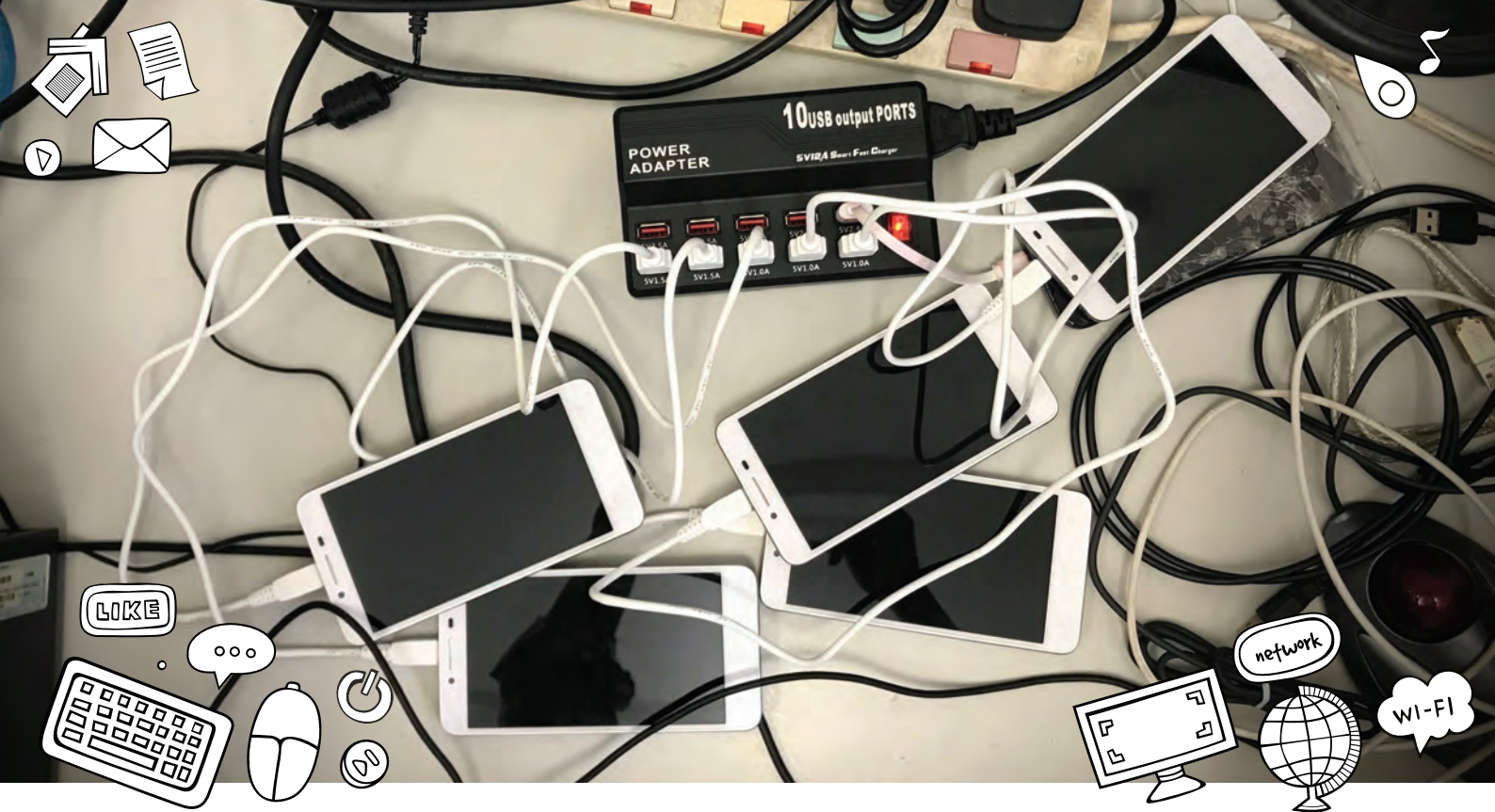
文 鲁爷

2001 年，东北一家国有疫苗公司悄无声息地进行改制。多年后再回首，人们才明白其中意义。

那年的 9 月 18 日，上市公司长春高新旗下的长生生物迎来了两位新的股东——韩刚君和杜伟民。韩刚君用 1932 万元买下了长生生物 30% 的股权，成为第二大股东；他和杜伟民的合资公司则成为了长生的小股东。杜伟民是长生生物的销售总监。这笔交易几乎没人注意到。长生生物被放到聚光灯下，是在两年后了。

2003 年末，长春高新和长生生物的掌门人高俊芳把 2000 万打进公司账户，要将长生生物私有化。算下来，高俊芳的出价是每股 2.4 元；而当时多位竞标者表示，他们愿意出 3 元/股的价格。高俊芳很感谢他们的出价，然后拒绝了他们。这引起了漫天质疑，有人把低价贱卖国有资产平的平报值寄到了市政府。但仍然没有阻挡高俊芳成为长生生物第三大股东。终于，高俊芳、韩刚君和杜伟





While looking into the We-Media ecosystem, the research team at JMSC has to grapple with the question of censorship and regulation of We-Media in China. In January 2018, JMSC Associate Professor, Dr King-wa Fu, who heads the WeChatscope project, started monitoring WeChat public accounts for removed content. The research team aims to understand WeChat's content distribution, user engagement, platform intervention, and connectivity enabled by the technology.

The WeChatscope team now systematically collects data from more than 3,000 WeChat public accounts. The sample size is always rising. Although WeChat does not provide an easy way for the public to access its data, the WeChatscope team has developed a system to 'scrape' data from the mobile application interface of WeChat. An automated "crawler" revisits published posts and stores their content. Once a post is detected as censored, the copy in the database is restored, and the system allows public access to the censored data through an application programming interface (API) or a web link.

The team finds that published posts are removed based on the following reasons: violation of applicable laws or regulations, self-deletion by the account user, account migration, violation of copyright, and account suspension by regulators. An invisible 'red line' of censorship is drawn across the internet through automated technological means and manual controls enforced by the state. It is an open secret that official accounts 'distorting party and national history' would be removed, but investigations reveal other motivations.

WeChatscope is committed to knowledge exchange with the public. In July, the research team announced a soft launch of their official website and API system (<http://wechatscope.jmsc.hku.hk/>), which can be accessed through web browsers and mobile devices. Open data is already available. Data includes vital facts and figures as

well as the full text of censored articles on WeChat public accounts within the previous seven days. This enables the public, media and scholars to access the content of value to them.

The WeChatscope team opens a unique window into China's governance and civic society by revealing the latest censored blog posts and provides the essential contextual background to global Internet users on various social media platforms. They have also started a crowdsourcing campaign to drive online participation, increase the efficiency of data collection and ideally, turn We-Media users and readers into cyber rights defenders by getting them involved and engaged in the project.

For more details, please visit the WeChatscope website: <http://wechatscope.jmsc.hku.hk>

**Ms Regina Chung (鍾慧敏女士)**  
Journalism and Media Studies Centre

## References:

1. iiMedia Research (2017). 2017年年中國新媒體行業全景報告 (2017 China New Media Industry Panorama Research Report). [online] Available at: <http://www.iimedia.cn/14907560984131i1n4.pdf> [Accessed 4 Oct. 2018].
2. China Daily (2018). 'We-media' platforms describe rapid growth at Xiamen trade expo. [online] Available at: <http://www.chinadaily.com.cn/a/201809/10/WS5b95d0c5a31033b4f46551c5.html> [Accessed 4 Oct. 2018].
3. Xia S. A Study on the Profit Model of We Media in China. *Global Media Journal*. 2017, 15:28
4. The Initium (2018). 張凱律師：都在一條船上 (lawyer Zhang Kai : In the same boat.) [online] Available at: <https://theinitium.com/article/20180728-mainland-vaccine-zhangkai-1/> [Accessed 4 Oct. 2018].



# PROGRAMME



**Bachelor of  
Arts & Sciences**



**BASc**  
Bachelor of  
Arts & Sciences



Faculty of Arts  
Faculty of Science  
Faculty of Social Sciences

HKU is proud to launch the new Bachelor of Arts and Sciences degrees, involving all ten faculties with five BASc curricula and one BASc programme for senior year students in the academic year of 2019-2020. These curricula aim at nurturing globally-minded thinkers and leaders able to leverage their interdisciplinary knowledge and skills to address the contemporary and future challenges of our increasingly complex world. Among the five BASc curricula, The Faculty of Social Sciences will host the Bachelor of Arts and Sciences programme administratively.

## **Bachelor of Arts & Sciences (BASc)**

Jointly offered by the Faculties of Social Sciences, Arts, and Science, the 4-year BASc curriculum is designed for intellectually ambitious students who want to take control of their learning and develop a broad set of scholarly skills. Students will have individual guidance from an academic tutor who will help them design the course of study that meets their passions coherently and efficiently.



**Pathways**



**Faculties**

**MULTIPLE  
OPTIONS**

Students will take three interdisciplinary core courses, co-designed and co-taught by the teachers' spanning across the three Faculties to build a solid foundation for interdisciplinary learning. Students are also required to take courses within two distinct pathways: (1) Cultures/Societies and (2) Physical World/Biological/Human Sciences. Additionally, the curriculum provides students with a unique opportunity to put their interdisciplinary learning into practice in the real world by offering local or non-local internships through the Social Innovation programme. Three horizontal courses are exclusive for BASc degrees further fostering students' interdisciplinary thinking and a sense of belonging to the cohort.

Traditional education trains students in particular disciplines, however global problems seldom fit neatly into a single academic area. The intrinsically integrated BASc curriculum helps students to make connections and changes in the world using interdisciplinary knowledge.



[www.socsc.hku.hk/basc](http://www.socsc.hku.hk/basc)

# Asian Family Summit

亞洲家庭高峰會

Sustainable Development & Family Well-being: Agenda For Action in Asia  
家庭福祉・持續發展：亞洲行動綱領

Comm  
Imp

## Empowering Families to Face Challenges of Social Changes

The Consortium of Institutes of Family in the Asian Region (CIFA) co-organized the Asian Family Summit (AFS) with the Faculty of Social Sciences of The University of Hong Kong (HKU), Family Council and Social Welfare Department of the Hong Kong Special Administrative Region (HKSAR), and the Hong Kong Council of Social Service. The Summit was in response to the United Nations' call for action to achieve the Goals of the 2030 Agenda For Sustainable Development. The event was held at The University of Hong Kong in August of 2018 with the theme of "Sustainable Development and Family Well-being: Agenda for Action in Asia."

The Honorable Mrs Carrie Lam, the Chief Executive HKSAR, officiated the Opening Ceremony alongside Ms Daniela Bas, Director, Division of Inclusive Social Development of the United Nations, together with Professor the Honourable Arthur Li, Chairman of the Council and Professor Xiang Zhang, President and Vice-Chancellor, HKU.

The Summit was a great success with an attendance of over 560 participants from seventeen countries/regions, including over one hundred academics, researchers, government officials and practitioners. These participants presented papers on a wide variety of issues faced by families in different economic and social settings in Asia. Altogether there were three keynote speeches, four plenary sessions (with sixteen presentations), four

concurrent sessions (with fifty-eight presentations), and eight poster presentations. Post-summit workshops and agency visits were well attended by participants.

The first keynote speech was by Ms Bas on "Sustainable Development Agenda 2030 – an Agenda for World Action." The speech set the scene for deliberations, sharing the global consensus and commitment among 193 Member States of the United Nations to work towards achieving the seventeen Sustainable Development Goals (SDGs). Ms Bas's emphasis is that success depends on how well family policy issues integrate into the overall development planning at national levels. Collaboration is essential in achieving the SDGs at the same time.

The keynote speeches by Professor Daniel Shek of the Family Council on "Family Impact Assessment in Policy Formulation - the Hong Kong Experience" and by Professor Richie Poulton of the University of Otago, New Zealand on "The Dunedin Study - Insights for Advancing Family Well-Being" emphasised that more scientific methods to collect data are crucial so that knowledge can be applied systematically to facilitate informed decisions in policy formulation and service development. The speeches provided stimulation on how things can be done differently to ensure that efforts are efficient in order to reap the most significant impacts.







Other highlights of the Summit included the Family Well-Being Expo, which attracted over 1,300 family members. Families participated in interactive games, themed workshops and performances which raise awareness of ways to enhance the quality of family life. Another unique feature was the Final Round Adjudication of the Wofoo Asian Award for Advancing Family Well-being 2018. The finalists were made up of eight teams from China, Hong Kong, Malaysia, Singapore and Taiwan. The finalists competed for the Gold, Silver, and Bronze Awards. The finalists presented innovative measures and practice wisdom for addressing current family issues.

Overwhelming positive and encouraging feedback was received from participants. Appreciation was shown for the opportunity to share, learn and network, as well as the breadth and depth of the topics covered. The wide range of speakers and perspectives that were gathered were admirable. All the insights, experience and wisdom therein have provided thought for the formulation of effective policies, development of evidence-based and innovative services and practices, and provision of preventive measures, timely support and cost-effective intervention for families.

Ms Bas and Professor Poulton are particularly impressed by the collaborative efforts among the various sectors. Hong Kong is taking the lead in the region in setting an excellent example for other parts of the world. The video clipping of the Summit has been uploaded onto the portal of the Division and the Summit will be featured in the upcoming report on family issues in the United Nations. Moreover, the AFS has attracted media interest and has been widely reported on TV, radio programs, and newspapers as well as online channels and websites.

## Co-chairpersons, Asian Family Summit 2018

**Professor Samson Tse Shu-ki (謝樹基教授)**  
Department of Social Work and Social Administration  
HKU

**Ms Patricia Chu Yeung Pak-yu (朱楊珀瑜女士)**  
Chairperson, CIFA

**Professor Daniel Shek Tan-lei (石丹理教授)**  
Chairman, Family Council, HKSAR Government







# 2018 ARNOVA-Asia Conference

June 27-28, 2018 | Hong Kong

The growing awareness of the importance of collaborative governance and civic engagement in public affairs, nonprofits and philanthropy have become essential vehicles for harnessing societal contributions to advance the social good.

On June 27-28, 2018, the 2018 ARNOVA-Asia Conference was successfully held at HKU. The Conference was co-organised by the Excellence and Capacity building for Entrepreneurship and Leadership for the Third Sector (ExCEL3), Faculty of Social Sciences of the University of Hong Kong (HKU) and the Association for Research on Nonprofit Organizations and Voluntary Action (ARNOVA).

Professor Wai-Fung Lam, the Project Director of ExCEL3, expressed the uniqueness of the Conference for its academic and community impact. "The ARNOVA Conference is more than an academic conference. Other than academic presentations, we also focus on how to connect practitioners, as well as academics from overseas and locally, to bring the forces together to forge collaboration. This provides innovation through academic presentations and the philanthropy speed dating sessions." The first philanthropy speed dating sessions in Hong Kong and the region provided potential matching opportunities through face-to-face interactions between NGO practitioners and funding foundations, donors and professionals. The sessions were eye-opening and well-received.

Dr Angela Eikenberry, the President of ARNOVA, also echoed and praised the impact of the Conference, "the Conference is a wonderful place for people to share their latest research, theorising data they have on issues related to government and third-sector relations in these wonderful discussions, thinking about these issues and how we can continue to improve in the future."

The Conference provided a stable platform to fortify sharing and the exchange of issues on government-third sector relations in Asia, and further stimulated the development of philanthropy and giving in Hong Kong. Over 300 participants attended the Conference, including donors, NGOs, academics and professionals from Australia, Mainland China, Hong Kong, Japan, New Zealand, South Korea, Singapore, the United Kingdom and the USA.







## **Hong Kong ASD Conference 2018 and Extension of “JC A-Connect: Jockey Club Autism Support Network”**

Since 2015, JC A-Connect: Jockey Club Autism Support Network in the Project has supported more than 5,000 students with autism spectrum disorder (ASD) in 425 local mainstream primary and secondary schools. The program has assisted 30,000 parents and enhanced the capacity of 15,000 professionals. In July 2018, the Faculty hosted the Hong Kong ASD Conference 2018: Autism and Education: What Works, the third international conference of its kind, and brought together more than 800 stakeholders from NGOs, universities, secondary and primary schools, government and the healthcare sectors to facilitate knowledge exchange and professional sharing.

Due to the increasing demand for cross-sectoral service support for students with ASD, The Hong Kong Jockey Club Charities Trust has further donated \$243 million to support JC A-Connect over the next three years (2018-21) with the following features:

- Student coaching programmes will be extended to 500 mainstream primary and secondary schools.
- A series of teacher training workshops covering a range of skills essential for students with ASD will be conducted for school personnel.
- The World Health Organization Caregiver Skills Training Programme for Families of Children with Developmental Disorders or Delays programme will be adapted and localised in Hong Kong to support parents/caregivers of students with ASD.
- A wide array of public education programmes will be organised to raise awareness/understanding of people with ASD and to promote social inclusion.

JC A-Connect is supported by the Education Bureau and the Faculty of Social Sciences of The University of Hong Kong. Project partners include Caritas - Hong Kong, Heep Hong Society, Hong Kong Sheng Kung Hui Welfare Council Limited, Hong Kong Young Women's Christian Association, New Life Psychiatric Rehabilitation Association, SAHK, The Salvation Army, and Tung Wah Group of Hospitals. On July 9, 2018, more than 400 school representatives attended a launch ceremony held at the HKU Centennial Campus.

## FACULTY AWARDS



I enjoy the professional practice of promoting the mental health of individuals in the community. When I assumed my academic career, I expanded from a practitioner to a researcher-practitioner-teacher. The education of active clinical practice involves the integration of three integral components: research, direct practice and teaching. As a researcher-practitioner, I am committed to the principle that all practices must be grounded in research. In addition, I prefer to be actively participating in the practice process myself. In my clinical practice research projects, I participated in the provision of counselling services. This practice enables me to learn how the processes unfold and how certain concepts and skills can be played out in the lives of the clients. I use the clinical data and clinical wisdom generated from the practice to facilitate my publications and teaching. The first-hand practice experiences have become wisdom that I can readily share with my students. The students welcome this approach as it integrates theories with practice in social work and counselling.

The materials and data we developed through various practice research projects have resulted in journal articles, books and professional and client manuals. These materials can help students and professionals to understand and use the materials for their practices readily. Indeed, we have named this process as a "SET" model. While "S" denotes services for our clients, "E" stands for evaluation/ research and "T" means "teaching/training" for students and professionals. This is an interactive process whereby the clinical practice teaching can result in research and services and vice versa. To end this, I enjoy the role of a researcher-practitioner-teacher and am thrilled to see how students have benefitted from our clinical practice teaching. Clinical practice teaching is an integral part of a professional training programme, and clinical practice teachers are valuable and indispensable in the process.

**Professor Daniel Wong Fu-keung (黃富強教授)**

Department of Social Work and Social Administration





At the heart of my teaching philosophy lies a resolve to incorporate the practices, principles and pedagogies foundational to rigorous social research into my taught courses across both undergraduate and postgraduate levels. I achieve this by creating outstanding teaching experiences for my students that are enriched by - and in turn, enrich - the pioneering research taking place in the Faculty.

This approach is best illustrated through my teaching and Directorship of the Department of Sociology's undergraduate Sociology Capstone experience (<http://sociology.hku.hk/capstone>). This course provides students with the opportunity to integrate their sociological knowledge and skills through a series of workshop, class discussions, student presentations, portfolio work and experiential learning.

I have been able to strengthen the research elements in our Capstone experience by facilitating the Capstone Fair. The fair is a high-profile public event held on-campus each semester which gives students the opportunity to present their capstone projects to peers, staff and the general public. With the generous support of the Faculty of Social Sciences, an online archive of student projects has also been developed.

My teaching practice also reaches beyond the confines of university classrooms, smoothing students' transitions from school to universities by developing ways to incorporate sociological research and approaches into teaching in secondary schools in both Hong Kong and the UK. I have developed a set of teaching packs, worksheets, instructional videos and classroom activities designed to help secondary students use social media to explore different social worlds (<http://sociology.hku.hk/impact-social-media>).

I am particularly grateful to my Department, Faculty and University colleagues for their considerable support, as well as for encouraging me to reflect upon - and innovate in - my teaching practice. My utmost thanks, however, must go to my students, who continue to be my greatest source of inspiration.

**Dr Tom McDonald (湯浩然博士)**  
Department of Sociology

## FACULTY AWARDS



### Changing the Practices of iSlave Producers and the Working Condition of Student-Labourers in Apple Supplier Factories in China

This action research project studied the previously unresearched phenomenon of the use of vocational schools' students as a new form of labour use in Apple's supply chain in China. This group, totaling over 20 million since 2008, is the "student labourers" who fuel up China's economic growth in the post-financial crisis period. This new source of labour subjects is driven by the vast amount of student interns from vocational schools under the auspice of the Chinese state and the demand of the market. In 2010, when a wave of suicides occurred inside Foxconn plants, I pulled together a 20-University Research Group to identify the new forms of labour use in China, reveal the working conditions of student interns inside Apple's supplier factories and construct 'senseware' for migrant labour protection.

The Project led to three major areas of impact:

- Influencing the agenda of labour right investigations and campaigns launched by local and International NGOs;
- Raising international media concern; and
- Bringing about real changes of labour protection policy in business Corporate Social Responsibility realm.

The Project greatly influenced the civil society and business policy for the improvement of the well-being of vocational school students.

The research findings have been put onto a pioneered digital platform 'senseware' to provide knowledge on labour and gender protection. The "senseware" has been formally launched since August 2018, to test the relevance of the "senseware" content in preparing the students to realize their labour rights. Two sets of learning curriculum on labour rights and gender awareness will be launched; and a series of video production on labour and gender rights will also be produced; which will benefit a total of more than 50,000 workers.

**Professor Pun Ngai (潘毅教授)**  
Department of Sociology



## STUDENTS

Social Sciences Society, HKUSU

Social Sciences Society, HKUSU is a student organisation which improves the general welfare of its members. We increase members' sense of belonging and enhance members' awareness of the local community through the organisation of various activities. We have organised different events during our tenure.

In April, 'Superpass Festival x Welfare Week 2018' was organised. We encouraged members to strive for excellence in their examinations utilising various methods such as writing on red couplets and receiving red packets symbolising luck. A majority of our members came and took welfare packs. Participants also enjoyed snacks and took pictures with the backdrop. It was an excellent chance for us to communicate and connect with our members.

In September, our annual High Table Dinner was held at Loke Yew Hall. It was a valuable occasion where members of the Society gathered and mingled with each other. Dr Benjamin Au Yeung was invited as the Guest of Honour to share his experience and knowledge on preserving Cantonese. The Associate Dean of Faculty of Social Sciences, Professor Samson Tse, also attended the event and exchanged ideas with the Executive Committee on various issues.

Over the next few months we will continue to organise events. These events include The Social Sciences Festival in mid-October, which aims to promote local traditional handicrafts. Also, an exhibition on gender identity will be displayed to raise the awareness. We will also co-organise a forum for the upcoming By-Election to the Legislative Council with the Law Association, HKUSU. A welfare week will be organised distributing welfare packs to express our gratitude for our members. We have previously participated in the female basketball and football Inter-Faculty Sports Competitions. In the future, members are welcome to participate in the competitions as players or spectators.

Members are encouraged to participate in our future events. For more updated information, please like the Facebook page of Social Sciences Society, HKUSU. (<https://www.facebook.com/SSSHKUSU/>) and follow our Instagram page of SSSHKUSU (<https://www.instagram.com/ssshkusu/>).

**Miss Lilian Lo Wing-yan (勞穎茵小姐)**

Chairman

Social Sciences Society, HKUSU

Session 2018



## ALUMNI

# CHALLENGE Yourself and Never Stop LEARNING



After finishing my Master of Journalism course at the Journalism and Media Studies Centre (JMSC) of The University of Hong Kong (HKU), I ventured into compliance and regulation. It was here that I was able to use the vast knowledge I had obtained from the JMSC.

In 2017, I enrolled for a joint master's programme called Master of Global Public Policy (MGPP) offered by HKU and the University of Southern California. I was interested in learning about global public policy issues and how they relate to our day to day lives.

In July-August 2018, I enrolled for a self-paced Massive Open Online Course offered by HKUx and received a verified certificate in Introduction to FinTech. Next year, I will be joining FinTech Ethics and Risks.

Over the years I have developed an excellent bond with HKU, and I regard the HKU campus as my "home." I spent my first year in Hong Kong living at the Graduate House while the Centennial Campus was still under construction. During this time, the HKU MTR station did not exist.

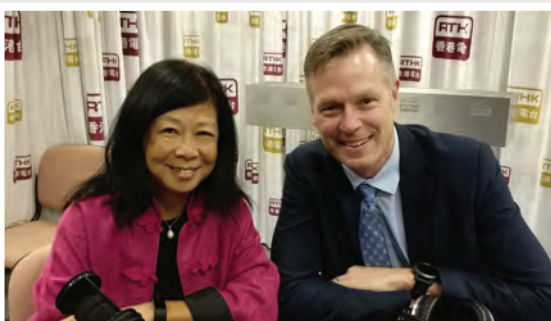
HKU remains as one of the top universities internationally. The Faculty has excellent programmes that are ideal for everyone including; fresh high school graduates, working people, and international exchange students both young and old.

Mr Sanday Chongo Kabange  
MJ (2012), MGPP (2018)

## A Key Commentator on Global and Regional Economic and Financial Issues

Connie is a regular presenter of RTHK3's Money Talk; Hong Kong's most listened to English language radio programme. Other guests include investment banks' regional or Chinese strategists and research heads, property gurus, independent consultants and traders, government and business leaders, with whom Connie discusses the latest global and regional economic and financial issues. For the last thirty-five years, Connie has been an economist and Asian research head for both global and local organisations. Connie is often invited to speak in investment seminars and economic conferences around the region due to her boutique research firm Economic Research Analysis (ERA).

Mrs Connie Bolland Leung Woon-ho  
(鮑梁煥好女士)  
BSocSc Economics & Statistics (1979)



## HKUBS - HKU Brothers & Sisters

As real Societists, we reach out to society, practicing the knowledge we have acquired from literature. HKUBS is a cadre of enthusiastic HKU members striving for active community engagement and the promotion of spiritual excellence. Students, alumni and staff members from different faculties and departments of the University, act in a united HKU spirit, sharing the same dream of making our society better.

HKU and her graduates have long been spearheading the city's social engagement as well as societal advancement. We have been encouraging HKU members to actively engage in community affairs particularly in the field of social welfare. On April 8<sup>th</sup> this year, more than fifteen HKU students, alumni and staff members ran our inaugural charitable marathon. The marathon was organised by a local registered charity named "Light & Love Home." The charity was established in 1983 with the aim of serving the community via diversified social services.

Through various charitable events and other programmes, HKUBS raises funds and donates our expertise to support civil society. We at the same time build up connections and maintain solidarity among current and former University members. We are more than happy to see this enthusiasm widely spreading among HKU members; it will only thrive on your continuous support.

Mr Alfred Lau Chung-yan (劉頌恩先生)  
BSW (2016), MSocSc (2018)



# DONATIONS

## Donations (From March to August 2018)

Donor	Recipient	Nature	Amount (HK\$)
The D H Chen Foundation	Centre on Behavioral Health	Supporting Mindfulness for Resilience Building in Clinical and Non-clinical Staff Program	674,102
Li Ka Shing Foundation		Supporting Palliative Social Work Symposium 2017	217,646
John Templeton Foundation	Department of Psychology	Supporting Getting at the Heart of Cross-Cultural Differences in Generosity: Explaining How Individual, Contextual and Cultural Factors Shape Prosocial Behavior	1,486,863
Dr Serena Yang Hsueh Chi		Supporting HKU-Oxford Exchange Programme	300,000
Fu Tak lam Foundation Limited		Supporting Project on "Taking Care of the Caretaker: Providing Training to Teachers and Staff of Christian Zheng Sheng College and their Family Members"	68,843
C&A Foundation	Department of Sociology	Supporting Digital Platform for Migrant Labor and Gender Awareness in China	481,880
Ms Margaret Zee	Faculty of Social Sciences	Supporting Global China Social Research Hub	2,000,000
Global Investigative Journalism Network	Journalism and Media Studies Centre	Supporting Activities of the Centre	97,921
WYNG Foundation		Supporting Activities of the Centre	55,000
The Hong Kong Jockey Club Charities Trust	Sau Po Centre on Ageing	Supporting Age-friendly City Project - Public Forum on Age-friendly Transportation	162,396
The Hong Kong Jockey Club Charities Trust		Supporting Age-friendly City Project - Sponsorship for IAGG 2017	30,553
Dr M K Koo		Supporting Activities of the Centre	20,000
Ms Anna Tong			20,000
Shang Cheung Trading Company			20,000
Ms Chung Joy Sui Wah			15,000
Dr Hector Ma Tin Ging			10,000
Dr Lee Shiu			10,000
Dr Wong Cheong Fat Paul			10,000
Mr Chan Wing Tat			10,000
Mr Chiu Shun Kong			10,000
Mr Lee Man Tat			10,000
Mr Mok Yeuk Chi			10,000
Professor Henry Chan			10,000
Shang Cheung Trading Company			10,000
Sotheby's Hong Kong Limited			10,000

# RESEARCH GRANTS (RGC)

## Research Grants (Awarded by RGC 2018–19)

Principal Investigator	Department/Centre	Project Title	Award (HK\$)
Professor G C S Lin	Geography	China's Urban Redevelopment Reinvented with Public Participation: Genuine Engagement or Symbolic Governance	632,421
Dr C J Fung	Politics and Public Administration	Reconciling Status: China, Foreign-Imposed Regime Change and Intervention at the UN Security Council	297,500
Dr C S Chan	Psychology	Radical Political Identification and Collective Action: A Mixed Methods Study	617,625
Dr Z Chen		Objectification Decreases Prosocial Behavior: Mediating Roles of Self-Objectification and Relative Deprivation	759,660
Dr X Hu		Understanding Mnemic Neglect in Self-Evaluation: A Sleep-Based Memory Consolidation Perspective	603,332
Dr X S Li		A Randomised Controlled Trial of the Effects of Cognitive Behavioural Therapy and Bright Light Therapy for Insomnia in Adolescents with Evening Chronotype	424,474
Dr W I Wong		"He Can't Help Noticing Her": Gender Salience and Other-Gender Relationships in Single-Sex Versus Coeducational School Students	408,442
Dr L P Jordan	Social Work and Social Administration	The Long Term Impact of Diverse Parental Migration Experiences on Youth Transition to Adulthood: A Case Study from Southeast Asia	1,262,336
Dr V W Lou		Meaning Making in Dementia Caregiving among Adult Children in Hong Kong: Tasting a Generation Model	604,020
Dr S M Ng		Brief Daily Body-Mind-Spirit Practice for Sustainable Emotional Capacity and Work Engagement for Community Mental Health Workers - A Multi-Site Randomized Controlled Trial	525,228
Dr M Ran		Randomized Controlled Trial of Enhancing Contact Model on Reducing Stigma of Mental Illness in Family Caregivers of Persons with Schizophrenia in Rural China	611,650
Dr G H Y Wong		A Culturally Appropriate Multimodal Non-pharmacological Intervention for Chinese People with Mild-to-Moderate Dementia	686,688
Dr D A Palmer	Sociology	Daoism, Ethnic Identity and State Socialism: the Lanten Yao on the China-Vietnam-Laos Borderland	849,572



# EVENTS SPOTLIGHT

## Women Make Docs

February 6, 2018  
Journalism and Media Studies Centre



## "Sustainable Sunday Couture: Domestic Workers Upcycling Fashion" Exhibition

March 4 – April 1, 2018  
Department of Sociology

## The General Will, The Common Good, and a Democracy of Standards

March 14, 2018  
Department of Politics and Public Administration



## Workshop on Focusing-Oriented Expressive Arts (FOAT®) Training

March 5, 6, 8 & 9, 2018  
Centre on Behavioral Health

## GrandMove® Exercise Day

May 24, 2018  
Sau Po Centre on Ageing



## EVENTS SPOTLIGHT

### MATPP 20<sup>th</sup> Anniversary Celebrations Gala Dinner

May 26, 2018  
Department of Geography



### Everyday Space and Memory at Wah Fu Estate Public Engagement Exhibition

June 10, 2018  
Department of Sociology



### Correctional Services Department Employment Symposium 2018

June 29, 2018  
Centre for Criminology



### Symposium on Poverty Alleviation Strategies in Mainland China, Taiwan, Hong Kong and Macau: Challenges and Way-forward

July 6, 2018  
HKJC Centre for Suicide Research and Prevention



### S. C. Fan Memorial Lecture: Better Living with Dementia: The Role of Non-Pharmacological Strategies for Supporting a 'Good Life'

August 6, 2018  
Speaker: Professor Laura N Gitlin







## RTHK Deliberative Forum on Public Consultation on Land Supply

August 25, 2018  
Public Opinion Programme

## Jockey Club Autism Support Network (JC A-Connect)

2018 香港科學節公開講座：  
自閉人士與別不同的腦袋  
April 15, 2018

Professional Training Seminar 2018  
August 23, 2018



## Jockey Club End-of-Life Community Care Project (JCECC)

Workshop on Distress at the End-of-Life Care: Fostering a Culture of Care and Support for Professionals and Teams

March 7, 2018

JCECC Conference on Innovation-Impact: The Review and Vision of Community End-of-Life Care

June 20 – 21, 2018

End-of-Life Community Care Seminar: "My Little Story with Mom"

August 24, 2018



## Jockey Club Holistic Support Project for Elderly Mental Wellness (JC JoyAge)

JC JoyAge Family Fun Day

July 21, 22, 28 and August 4, 2018

Speaker: Miss Kwok Wai Wai

Clinical Psychologist & Project Manager (Clinical)





## **Jockey Club Water Initiative on Sustainability and Engagement (JC-WISE)**

### **“My River, My Community” Scheme: Guided Tour to Lam Tsuen River Catchment**

March 31 and April 21, 2018



### **“My River, My Community” Scheme Workshop and Guided Field Trip to Sheung Yue River Catchment**

April 27, 2018 (Workshop) and April 28, 2018 (Field Trip)



### **“My River, My Community” Scheme Workshop and Guided Field Trip to Kam Tin River Catchment**

June 28, 2018 (Workshop) and June 30, 2018 (Field Trip)

### **Water Footprint Hub for Social Sciences Summer Programme 2018**

July 18, 2018

## **Contemporary China Studies Public Lecture**

### **China's 21<sup>st</sup> Century Strategy: The Colombo Lotus Tower and the Belt and Road Initiative**

March 29, 2018

Speaker: Professor Patrick Mendis

Associate-in-Research, Fairbank Center for Chinese Studies, Harvard University



## **Public Policy Seminar**

### **Impact of the AI Revolution on Work and Society**

April 6, 2018

Speaker: Professor Barbara Meynert

Adjunct Professor, Faculty of Social Sciences, HKU



## SELECTION OF RECENT PUBLICATIONS

### Announcement

The Societist would like to clarify in the Spring Issue 2018, the book "Celebrity Culture and the Entertainment Industry in Asia: Use of Celebrity and Its Influence on Society, Culture and Communication" publisher is Intellect Books and the distributor is University of Chicago Press.

### Perceived Stress Moderates the Effects of a Randomized Trial of Dance Movement Therapy on Diurnal Cortisol Slopes in Breast Cancer Patients

Authors: Ho, R T H, Fong, T C T & Yip, P S F

Journal: Psychoneuroendocrinology

Women with breast cancer are at risk of psychosocial distress and may suffer from aberrant diurnal cortisol rhythms. Dance movement therapy (DMT), a movement-based psychotherapy that incorporates exercise and artistic components, has demonstrated stress reduction effects. This study examined the effects of DMT on the diurnal cortisol rhythms of breast cancer patients undergoing radiotherapy treatment and the role of perceived stress in producing such effects. The study sample comprised 121 Chinese breast cancer patients randomised to the DMT ( $n = 63$ ) and control ( $n = 58$ ) groups. The intervention consisted of six 1.5-h group sessions held twice weekly throughout radiotherapy. Participants completed validated self-report measures of perceived stress, fatigue, pain, and sleep disturbance and provided five salivary cortisol samples at baseline (Time 1) and post-intervention (Time 2). Moderated mediation analysis was used to evaluate the intervention effect on Time 2 diurnal cortisol slopes. Despite the absence of a significant DMT effect on diurnal cortisol slopes ( $B = -0.55$ , 95% CI =  $-1.20$  to  $0.08$ ,  $\beta = -0.14$ ), baseline perceived stress significantly moderated the intervention effect ( $B = -0.18$ , 95% CI =  $-0.32$  to  $-0.05$ ,  $\beta = -0.30$ ). At high levels of baseline perceived stress (1 SD above the mean), the DMT group showed a steeper cortisol slope ( $M = -7.14$ ) than the control group ( $M = -5.80$ ) at Time 2. The present findings suggest that DMT might have a beneficial effect on diurnal cortisol slopes in breast cancer patients with high levels of distress.

**Professor Rainbow Ho Tin-hung (何天虹教授)**  
Centre on Behavioral Health



### Exploring the use of Telephone Helpline Pertaining to Older Adult Suicide Prevention: A Hong Kong Experience

Authors: Yip, P S F, Chan, C H & Wong, H K

Journal: Journal of Affective Disorders

**Background:** Older adults usually have a higher suicide rate than the general population. There are helpline services provided to older adults, but limited studies have examined the suicidal risks among the users, and how those services could be used as a platform to engage older adults in suicide prevention.

**Methods:** Regarding elderly suicide prevention, this study explored the potential usefulness and relevance of a telephone helpline service in Hong Kong, which had 106,583 users during 2012-2015. Estimation of the suicide rates of the users was made and compared with the general older adult population in Hong Kong. The users' suicide risks and their associated factors were assessed by survival analyses and an estimation system on the users' suicide mortality likelihood.

**Results:** The suicide rates of both male and female users were more than two times higher than the general older adult population in Hong Kong. The users' risks of suicides were higher during the early period of using the service; men, living alone, and having a history of mental illnesses were also associated with increased risks. Based on the identified factors, an estimation system was developed with a sensitivity of 0.73 and specificity of 0.54.

**Limitations:** A secondary data analysis.

**Conclusions:** By identifying a suicide risk profile and distinct telephone calling pattern among the users, early detection and a warning system should be implemented to allow timely intervention to reduce the number of older adult suicides in the community.



**Professor Paul Yip Siu-fai (葉兆輝教授)**  
Hong Kong Jockey Club Centre for Suicide Research and Prevention



## SELECTION OF RECENT PUBLICATIONS



### Long Term Exposure to Black Carbon and Cardiovascular Mortality in an Elderly

Authors: Yang, Y, Tang, R, Qiu, H, Lai, P C, Wong, P, Thach, T Q, Allen, R, Brauer, M, Tian L, & Barratt, B

Journal: Environment International

*Background:* Several studies have reported associations between long-term exposure to air pollutants and cause-specific mortality. However, since the concentrations of air pollutants in Asia are much higher compared to those reported in North American and European cohort studies, cohort studies on long-term effects of air pollutants in Asia are needed for disease burden assessment and to inform policy.

*Objectives:* To assess the effects of long-term exposure to particulate matter with aerodynamic diameter  $< 2.5\mu\text{m}$  (PM<sub>2.5</sub>), black carbon (BC) and nitrogen dioxide (NO<sub>2</sub>) on cause-specific mortality in an elderly cohort in Hong Kong.

*Methods:* In a cohort of 66,820 participants who were older than or equal to 65 years old in Hong Kong from 1998 to 2011, air pollutant concentrations were estimated by land use regression and assigned to the residential addresses of all participants at baseline and for each year during an 11 year follow up period. Hazard ratios (HRs) of cause-specific mortality (including all natural cause, cardiovascular and respiratory mortality) associated with air pollutants were estimated with Cox models, including many personal and area-level socioeconomic, demographic, and lifestyle factors.

*Results:* The median concentration of PM<sub>2.5</sub> during the baseline period was  $42.2\mu\text{g}/\text{m}^3$  with an IQR of  $5.5\mu\text{g}/\text{m}^3$ ,  $12.1(9.6)\mu\text{g}/\text{m}^3$  for BC and  $104(25.6)\mu\text{g}/\text{m}^3$  for NO<sub>2</sub>. For PM<sub>2.5</sub>, adjusted HR per IQR increase and  $10\mu\text{g}/\text{m}^3$  for natural cause mortality were 1.03 (95%CI: 1.01, 1.06) and 1.06 (95%CI: 1.02, 1.11) respectively. The corresponding HR was 1.06 (95%CI: 1.02, 1.10) and 1.01 (95%CI: 0.96, 1.06) for cardiovascular disease and respiratory disease mortality, respectively. For BC, the HR of an interquartile range increase for all natural cause mortality was 1.03 (95%CI: 1.00, 1.05). The corresponding HR was 1.07 (95%CI: 1.03, 1.11) and 0.99 (95%CI: 0.94, 1.04) for cardiovascular disease and respiratory disease mortality. For NO<sub>2</sub>, almost all HRs were approximately 1.0, except for IHD (ischemic heart disease) mortality.

*Conclusion:* Long-term exposure to ambient PM<sub>2.5</sub> and BC was associated with an elevated risk of cardiovascular mortality. Despite far higher air pollution exposure concentrations, HRs per unit increase in PM<sub>2.5</sub> were similar to those from recent comparable studies in North America.

**Professor Lai Poh Chin (賴寶珍教授)**  
Department of Geography

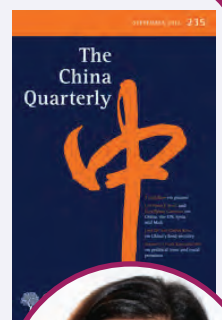
”

### Separating Intervention from Regime Change? China's Diplomatic Innovations at the UN Security Council Regarding the Syria Crisis, 2011 - 2017

Author: Fung, Courtney J

Journal: The China Quarterly

The recent Syria crisis at the UN Security Council represents a crucial case in China's response and approach to intervention. China actively intervened to ensure that a firm line is separating intervention from regime change, using three diplomatic innovations: the use of multiple, successive veto votes; discourse to delegitimise intervention as 'regime change' by Western powers, and engagement in norm-shaping of the international community's responsibility to protect post-intervention. These three innovations together highlight China's willingness to separate the intervention norm from that of regime change firmly. The article also draws insights from interviews of foreign policy elites in Beijing, New York and New Delhi.



**Dr Courtney J Fung (馮康雲博士)**  
Department of Politics and Public Administration

“



## Learning How to Make Friends for Chinese Adolescents with Autism Spectrum Disorder: A Randomized Controlled Trial of the Hong Kong Chinese Version of the PEERS® Intervention

Authors: Shum, K K M, Cho, W K, Lam, L O M, Laugeson, E A, Wong, W S, & Law, L S K  
Journal: Journal of Autism and Developmental Disorders

This study examined the treatment efficacy of PEERS® (Program for the Education and Enrichment of Relational Skills) among Chinese adolescents with autism spectrum disorder (ASD) in Hong Kong. The original PEERS® manual was translated into Chinese, and cultural adjustments were made. Seventy-two high-functioning adolescents with ASD were randomly assigned to a treatment or waitlist control group. The 14-week parent-assisted training significantly improved social skills knowledge and social functioning, and also reduced autistic mannerisms. Treatment outcomes were maintained for three months after training and were replicated in the control group after delayed treatment. The present study represents one of the few randomised controlled trials on PEERS® conducted outside North America.

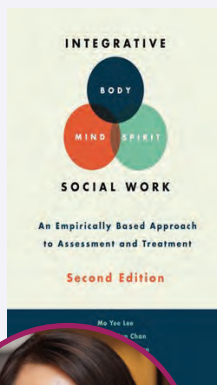


**Dr Kathy Shum Kar-man (沈嘉敏博士)**  
Department of Psychology



## Integrative Body-Mind-Spirit Social Work: An Empirically Based Approach to Assessment and Treatment (Second Edition)

Author: Lee, M Y, Chan, C H Y, Chan, C L W, Ng, S M, & Leung, P P Y  
Publisher: Oxford University Press



Social work practice in the twenty-first century calls for innovative methods to address increasingly intricate problems of the person, family, and community. Driven by holistic care and empowerment, Integrative Body-Mind-Spirit Social Work embodies the joining together of Eastern schools of thought and Western psychotherapeutic techniques. The emphasis is on body-mind-spirit connections in the treatment of individuals and families. Here the authors describe in depth the conceptual and philosophical underpinnings of the model and offer a step-by-step guide to using body-mind-spirit techniques and skills in clinical practice. With added insights from experts in Asia and America, this second edition features a chapter on the application of adapted techniques from the model on such diverse populations as children & adolescents suffering from dementia, eczema, and infertility. The texts are infused with philosophical wisdom from Daoism, Buddhism and the yin-yang perspective. Other forms of philosophy and tradition encourage personal reflection and effect transformative changes in the reader as well as individuals and families whom the framework ultimately aims to benefit. The book is an invaluable addition to the burgeoning field of integrative social work, a ready-to-access resource for those who wish to learn and practice body-mind-spirit techniques. This literature is for anyone who is set to explore the journey of self-acceptance and transcendence.

**Dr Celia Chan Hoi-yan (陳凱欣博士)**  
Department of Social Work and Social Administration



# CONGRATULATIONS

## Student

### Award

#### Triathlon Mixed Team Relay

Miss Bailee Brown (BSocSc Year I) played an integral part as the leadoff athlete for the triathlon Mixed Team Relay on Sunday, August 2. This was the final day of the Asian Games and the last chance for the Hong Kong delegation to capture a medal. With true grit, Bailee and her teammates got a bronze medal by winning with a solid Chinese team. This was a fantastic result for the Triathlon in Hong Kong, and Bailee Brown who played an integral part of her team. Bailee held her ground against some of the best athletes in Asia!

Bailee has had some previous successes at junior races. Upon graduating from Hong Kong International School, Bailee stepped up to train full time with the Hong Kong National Triathlon Team. Over the summer, she gained valuable fitness and experience for this Asian Games. Always a cheerful and fierce competitor, Bailee has made Hong Kong proud. We look forward to having her in our student body as a role model who will have dual careers as a scholar and athlete. We hope Bailee can inspire others to work hard in their academics and also have other pursuits in order to develop holistically.

by **Dr Michael Tse (謝家德博士)**  
Centre for Sports and Exercise



## Staff

### Award



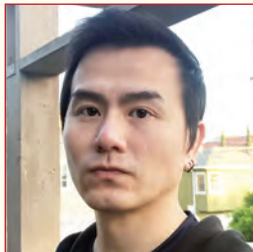
#### American Sociological Association Clifford Geertz Prize for Best Article in the Sociology of Culture

I was honoured to receive the American Sociological Association Clifford Geertz Prize for Best Article in the Sociology of Culture at this past year's ASA meetings in Philadelphia. The winning article was entitled "Max Weber's Disciples: Theorizing the Charismatic Aristocracy," and was published in *Sociological Theory* in December, 2017. The article draws on a multi-year study of a new religious movement (colloquially, a 'cult'), and accounts for how ordinary people can come to adopt charismatic leadership roles. I find that close disciples (termed the 'charismatic aristocracy' by founding sociologist Max Weber) play an important role in the process of leadership emergence, by both a) actively working to build up the confidence of the emergent leader, giving him or her the sense that they are capable of seizing upon and fulfilling an extraordinary role within a charismatic community, and b) creating 'repertoires for followership' - in essence, modelling worshipful behaviour that members of a wider community can imitate. Although this work examines a religious group, it has provided a basis for my more recent research in political sociology. For example, two newer articles (published in *Social Forces* and the *British Journal of Criminology*) examine Donald Trump's charismatic rise.

**Dr Paul James Joosse**  
Department of Sociology



## Promotions



**Professor Hakwan Lau**  
(劉克頑教授)  
**Professor**  
Department of Psychology



**Dr Lucy Porter Jordan**  
(喬曦博士)  
**Associate Professor**  
Department of Social Work and  
Social Administration



**Dr Frances Law Yik-wa**  
(羅亦華博士)  
**Associate Professor**  
Department of Social Work and  
Social Administration

## New Appointments



**Dr Benjamin Lucca Iaquinto**  
**Assistant Professor**  
Department of Geography



**Dr Keumseok Koh**  
(高金錫博士)  
**Assistant Professor**  
Department of Geography



**Dr Hui Li**  
(李輝博士)  
**Assistant Professor**  
Department of Politics and  
Public Administration



**Dr Dov Haim Levin**  
**Assistant Professor**  
Department of Politics and  
Public Administration



**Dr Terry Wong Tin-yau**  
(王天佑博士)  
**Assistant Professor**  
Department of Psychology

# FORTHCOMING EVENTS

## November 2018

### Screening of *JANE* (followed by a dialogue with Dr. Jane Goodall)

November 11, 2018

Venue: Yuet Ming Auditorium, CYMCC

Contact: Jennifer Wang

(Tel: 3917 1669; Email: jennifer.wang@hku.hk)



### Student Prize Presentation Ceremony 2018

Date: November 24, 2018

Venue: Loke Yew Hall, Main Building, HKU

Contact: Mr Sum Siu

(Tel: 39171261; Email: siuks@hku.hk ;

Website: <http://www.socsc.hku.hk/ppc/2018>)

### Sociology UG Capstone Fair

November 30, 2018

Venue: G/F, Centennial Campus

Contact: Kendrick Cheung

(Tel: 3917 4801; Email: ching83@hku.hk)

## December 2018



### 200<sup>th</sup> Congregation

Date: December 3, 2018

Venue: Hong Kong Convention and Exhibition Centre, Wan Chai

Contact: Miss Mary Tsang

(Tel: 39171226; Email: marytwc@hku.hk;

Website: <http://www.socsc.hku.hk/congreg/2018>)

## January 2019

### JC-WISE Public Lecture – “My River, My Community: Connect, Disconnect, Reconnect”

Date: January 20, 2019

Venue: Lecture Theatre, Hong Kong Central Library

Contact: Miss Emily Cheuk

(Tel: 39171232; Email: jcwise@hku.hk;

Website: [www.jcwise.hk](http://www.jcwise.hk))

## February 2019

### JC-WISE Public Lecture – “Water Sustainability in Hong Kong: Challenges and Prospects”

Date: February 2, 2019

Venue: Lecture Hall, Hong Kong Science Museum

Contact: Miss Emily Cheuk

(Tel: 39171232; Email: jcwise@hku.hk;

Website: [www.jcwise.hk](http://www.jcwise.hk))

## April 2019

### JC A-Connect Autism Fun Day

Date: April 2019

Contact: Miss Eunice Lai

(Tel: 3917 1224; Email: aconnect@hku.hk;

Website: [www.jca-connect.hk](http://www.jca-connect.hk))

## Sociologist

is published twice a year by the Faculty of Social Sciences, The University of Hong Kong. Electronic copies of *Sociologist* are available on the internet at [www.socsc.hku.hk](http://www.socsc.hku.hk).

For hard copies of *Sociologist*, please e-mail us at [socsc@hku.hk](mailto:socsc@hku.hk).

The Faculty welcomes any form of contribution to *Sociologist*.

### Editor-in-Chief

Professor William Hayward, Dean

(夏偉立教授)

### Editorial Assistants

Mrs Amy Tsang (曾梁惠慈女士)

Miss Vanessa Sit (薛曉霞小姐)

Miss Mary Tsang (曾詠釗小姐)

### Graphic Design

Mr Harold Tsang (曾可文先生)

### The Faculty of Social Sciences

reserves the right to publish and edit any material submitted for publication.

Views expressed in *Sociologist* by contributors do not necessarily represent those of the Faculty or the University.

### Faculty of Social Sciences

11/F, Faculty of Social Sciences

The Jockey Club Tower

Centennial Campus

Pokfulam Road, Hong Kong

Telephone: (852) 3917 1234

Fax: (852) 2517 0806

E-mail: [socsc@hku.hk](mailto:socsc@hku.hk)

Website: [www.socsc.hku.hk](http://www.socsc.hku.hk)

All rights reserved.

Fall 2018