

FALL ISSUE 2008

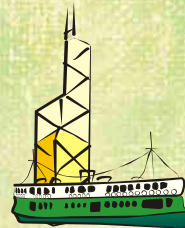


www.hku.hk/socsc

Socien**t**ist 社

科人

MANAGING WORLD CITIES



香港大學社會科學學院

FACULTY OF SOCIAL SCIENCES · THE UNIVERSITY OF HONG KONG

DEAN'S MESSAGE



At the start of this new academic year, I'd like to extend a very warm welcome to all new staff and students — and an equally warm welcome back to existing colleagues and students!

This year Dr Becky LOO from the Department of Geography is joining the Faculty team as Associate Dean in charge of postgraduate education. Her predecessor in the position was Professor Karen LAIDLER, who did a fabulous job and will be sorely missed. But Becky is already up to speed and making an invaluable contribution. Plus Karen has not disappeared into research and teaching. Rather, she is one of several new Heads of Department appointed across the Faculty this year. In January, Dr Danny LAM took over from Dr Peter CHEUNG in the Department of Politics and Public Administration. In July, Karen took over from Dr KE KUAH-PEARCE in the Department of Sociology. In September, Dr William HAYWARD took over from Professor Terry AU in the Department of Psychology. In December, Professor George LIN will reach the end of his term in the Department of Geography. Thanks to all our Heads, both stepping down and stepping up. Thanks, too, to Dr Sandra TSANG, who with one year under her belt as Head of Social Work and Social Administration will soon be the senior figure in the Headship group.

This is a landmark year for the Faculty's flagship

undergraduate programme, the Bachelor of Social Sciences. More than 150 students joined us as freshmen this year, and they now form the first cohort that will be required, as a condition of graduation, to complete 24 credits of learning off campus. Of these 24 credits — the equivalent of four courses — 12 must be taken as an internship to meet the Faculty's Social Innovation requirement, and 12 must be taken outside Hong Kong to meet the Faculty's Global Citizenship requirement. Many students may end up taking two internships — one in Hong Kong for Social Innovation, and the other overseas for Global Citizenship. But other students may do an internship for Social Innovation, and an exchange programme or a summer school at an overseas university for Global Citizenship.

We firmly believe that sending students outside our campus for part of their programme will complement and enhance the learning undertaken here at HKU, and better equip our students to meet the challenges of the workplace once they have graduated and fled our nest. We are very grateful to the many alumni and friends of the Faculty who have partnered with us to provide off-campus learning opportunities and scholarships for our students.

To ensure that our undergraduates make the most of the many opportunities available to them, we have recently introduced an enhanced system of student



support. Under my Associate Dean for undergraduate education, Professor MOK Ka-ho, there is now a structure of academic advisers and student mentors for all incoming students. In addition, Ka-ho has created a series of orientation and induction workshops designed to familiarize students with the campus and with the expectations we have of them while they are members of the Faculty. We are strongly committed to providing the best possible environment for students to learn and grow during their time with us.

This is also an important year for the Faculty's research endeavours. On October 23-25, we will launch our collaborative Managing World Cities project in conjunction with our two core academic partners, King's College London and New York University. We are deeply honoured that the Chief Executive of the Hong Kong Special Administrative Region, The Honourable Donald TSANG Yam-kuen, has agreed to give the keynote address at our inaugural conference, and we are confident that his presence will make the conference a truly memorable occasion. Following directly on from the conference, we will build collaborative research teams with our partners from KCL and NYU, and set them up for four years of comparative work on three of the world's greatest cities, Hong Kong, London and New York. Our major research findings will be fully reported in future issues of *Societist*.

With fresh initiatives in both teaching and research, it looks like being an exciting year for the Faculty of Social Sciences. I hope that in the course of the year all of us in the Faculty will have a chance to meet with alumni and friends throughout the community to make the links between us stronger than ever.

Professor Ian HOLLIDAY
Dean



Very best wishes for the year ahead!



For more than a year, the Faculty has engaged in detailed planning for its Managing World Cities project. Now we are ready to begin the project with an inaugural conference in Hong Kong on October 23-25. Our two core academic partners in this initiative are King's College London and New York University. Our local partner here in Hong Kong is the Central Policy Unit of the Hong Kong Special Administrative Region Government. Here, our partners explain why they joined with us in launching Managing World Cities.



King's College London has been an enthusiastic participant in the Managing World Cities project from an early stage since the respective Heads of Social Sciences at HKU and of Social Science and Public Policy at King's discussed the idea two years ago and then approached the Wagner School to set up what is envisaged as a four-year partnership, encompassing a range of activities that will be generated at biennial conferences to be held in 2008, 2010 and 2012.

King's College London sees academic partnerships of this kind, with leading universities around the world, as a key feature of its strategic plan whereby both faculty and students have the opportunity of accessing the best that global higher education can offer and benefit from collaboration on both research and teaching fronts. We hope that researchers will be able to compare



the results of their work and, ideally, engage in international projects involving faculty working some of the time at one or more of the partner institutions. Just as important will be the creation of opportunities for both undergraduate and postgraduate research students to have the opportunity of spending some of their time outside their home institution.

King's, not surprisingly given its location in the heart of London, through its School of Social Science and Public Policy, has a particular

interest in the study of the challenges facing world cities, including, energy use and pollution, migration, housing and labour markets, policing, transports, culture and creative industries, architecture and the spatial environment. The project is timely, as the collaboration will develop against the backdrop of the Olympic Games in 2012. King's is especially keen to encourage a fruitful exchange between the academic and policy communities on the above issues.



Professor Christopher DANEKER
Co-Director, King's Centre for Military Health Research (KCMHR)
Department of War Studies
King's College London

NYU Wagner

During the past two decades the City of New York has undergone a dramatic transformation from being characterized in national media a "rotting" Big Apple to a booming world city that has the lowest crime of any large city in America, has reduced the welfare caseload by two-thirds, has a growing economy, and is a magnet for 44 million visitors a year.

The current administration has launched a multi-agency effort to reduce poverty and a plan to make the City greener and sustainable by 2030. It has more mega infrastructure projects underway, or on the drawing board, than at any time since the era of the masterbuilder Robert Moses. It has initiated anti-smoking and other health policies that are saving thousands of lives and, under Mayoral control, reorganized the school system and is improving student performance. All of these developments are testimony to the importance of creative and



competent management.

Despite its successes in recent years, New York faces many challenges in implementing the program it has already initiated and developing additional responses to emerging problems. In designing many of its policy and management reforms the City has drawn on the experience of other world cities to a degree unprecedented in previous administrations. To sustain and continue its upward trajectory New York needs to expand even further its search for innovative, effective solutions to the problems and challenges it faces.

Through its preparation of young professional for public service

leadership, and its faculty research on key policy and management issues the NYU Wagner School has been a participant in and an observer of the process of transforming the City through improved public management. The Wagner School enters the Managing World Cities research consortium, joining The University of Hong Kong and King's College London, with scholars and practitioners from Hong Kong, London, New York and other academic institutions and cities, to accelerate the process of learning about what works and does not work in the successful management of world cities.



Professor Dennis C SMITH
Associate Professor of Public Administration
Office of International Programs
Robert F Wagner Graduate School of Public Service
New York University



CENTRAL POLICY UNIT
The Government of the Hong Kong
Special Administrative Region

New York, London and Hong Kong are all important pivots in the world economy. New York and London are global cities in the West, each having a vibrant economy, possessing the financial strength to serve the region and the world at large as well as attracting economic, cultural, technological and educational talents; while Hong Kong, backed by the Mainland and engaged globally, is Asia's world city, aiming at becoming the most cosmopolitan city in Asia, enjoying a role comparable to that of London in Europe and New York in North America.

Through co-organizing the Managing World Cities Conference,

the Central Policy Unit (of the Hong Kong SAR Government) hopes to learn from the common experiences of global cities, like New York and London, thereby improving the governance of Hong Kong, thus enabling Hong Kong to maintain herself as one of the world's great cities, enjoying a status commensurable with New York and London.

Though global cities may share common characteristics, each individual city is uniquely shaped by its own history, national policies and cultural context. It is hoped that through idea exchanges with overseas experts in the conference, we can more thoroughly examine the specific local, cultural and national contexts of the three cities that make each of them unique, thereby



identifying an appropriate developmental trajectory for Hong Kong, maintaining both cosmopolitan and Asian characteristics, thus distinguishing itself from other Mainland cities as well as playing its own distinctive roles in China, Asia and the world.

Central Policy Unit
The Government of the Hong Kong
Special Administrative Region



April YEUNG, Andrea FOK, Grace IP, Priscilla SHAM and six other students of the Faculty spent a beautiful and meaningful summer in Thailand this year. They joined the seven-week Migrant Outreach Education Initiative (MOEI), a Social Innovation Internship Summer programme within the Faculty that gave them the opportunity to teach English to Burmese refugees and migrants in Chaing Mai and Mae Sot. After attending a one-week training programme, the students switched from a learner to a teacher role for six weeks, during which time they taught a group similar to their own age and adult learners as old as 60! Each day started and ended with a 90-minute trip on a *Songtaew*, a local bus, which was a cultural experience in itself.

The crowded trip offered an array of insights into Thai culture. The students integrated interesting games, songs, and role-playing into their teaching, yielding positive feedback. Andrea said that she used a computer to facilitate the visualization of unfamiliar words like "pizza" and "spaghetti". These words are closely linked to the adaptation and adjustment of the post-migrated lives of the refugees. Aside from

teaching, April talked about her experience staying in the refugee camp, far from the city. Her challenges include bathing in cold water in a bamboo-hut, sleeping

while rats scratched around her and tolerating the absence of telephones and internet services. She said she was proud of her adjustment to the environment, and seemed to even miss this special experience.



The Burmese refugees and migrants don't know much English. Communication with our students was limited to simple English words with the aid of non-verbal body language. Grace met a Burmese who creatively used a bilingual book on landmines as a bridge for communication. Instead of teaching English, Grace received a rich lecture on the harm landmines do to humans.

Priscilla learnt much from a Burmese girl who revealed that her brother committed suicide when he visited her. She showed the suicide note and shared the entire experience with Priscilla, who took on the role of

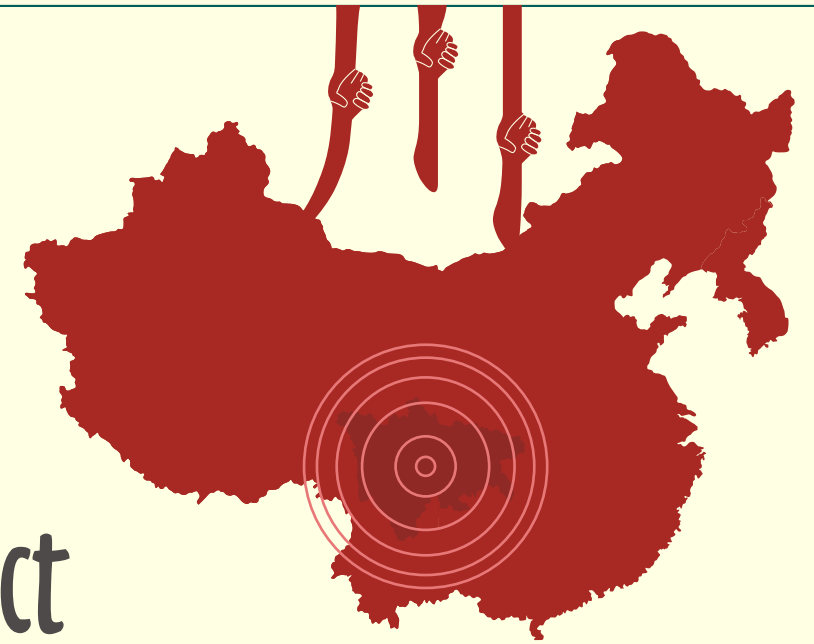
sympathetic listener as well as teacher. The girl appeared to be relieved after she related her tale. Though this girl was small and fragile, Priscilla admired her resilience and ability to face challenges.

In sum, our students emphasized that the trip was enormously rewarding and went far beyond their expectations. Intellectually, they gained insights in teaching that will stand them in good stead in the future. They feel that they have been enriched with knowledge about the history of Burma. Psychologically, they witnessed the resilience of the Burmese, and, at the same time, tested themselves in a challenging environment. Socially, they enjoyed genuine relationships with the Burmese that they met. They still maintain email contact with some of



the people there. They also set up different networks with NGOs and helpers from other parts of the world. More importantly, the impact of this experience is lasting. Priscilla is putting some of her reflections on the web, hoping to raise public concern for the needs of Burmese refugees and migrants. Our students are consolidating further plans in helping the Burmese, too. Probably, they will elicit our support in the future.

Under the tanned skin of these four students, we saw the humanity and the enthusiasm within. That is the beauty of a teaching and learning experience.



Sichuan Project

- Sociologist Role in Catastrophe Management



Sociologists have a unique role in providing assistance to the survivors of the Sichuan earthquake. Staff members of the Faculty have initiated different projects for supporting them.

Professor Joe LEUNG, Professor Cecilia CHAN and Dr Sandra TSANG of the Department of Social Work

and Social Administration and team members of Catastrophe Management Initiative from the Beijing Normal University are working on a research and intervention plan for supporting the psychosocial, mental health and spiritual

needs of the survivors. In addition, they have contributed informational material and uploaded it to the webpages of the University with the title China Earthquake: HKU Action.

Professor Paul YIP, another member of the Faculty from the Department of Social Work and Social Administration, has joined the task

force of a local charitable foundation and organizations in China, which are involved in empowering workers in China to support the survivors.

The Department of Psychology organized a seminar titled The Aftermath of Sichuan Earthquake: Psychological Relief Work on September 27 with guest speakers from health care, education and relief work settings. Dr Harry HUI of the Department is carrying out research on the helpers who were involved. At the same time, Professor Joseph CHAN and Elaine CHAN of the Department of Politics and Public Administration are planning research on the social capital of the region.



3 CAMPUS COMPARATIVE EAST ASIAN STUDIES PROGRAMME

Hong Kong • Japan • South Korea



The 3 Campus Comparative East Asian Studies Programme is an initiative jointly launched by:

- The Faculty of Social Sciences, The University of Hong Kong, China
- Underwood International College, Yonsei University, South Korea
- The International Centre, Keio University, Japan

Under this Programme, each institution selects 6 second-year students to undertake one year of study at the 3 campuses, spread across 3 semesters.

"I expect not only to explore the cultures of Japan and Korea from textbooks, but also through interactions with the students from other Universities. By observation and participation in these cultures, I hope to get some comparisons and in turn gain a refreshed way of looking at our own culture and identity."

Miss Yvonne CHOY Ying (蔡盈小姐)
BSocSc III

"I made up my mind the moment I saw the description of this 3 Campus Programme a few months ago in a bulk email. I was interested in the programme because I can go to two places in one exchange programme and, most importantly, we can experience a mutual exchange. I hope that the cultural shock that I am expecting to experience in this programme will inspire me to understand Japan, Korea, Hong Kong; and our home city's significance in the East Asian economy, culture and politics."

Miss Yuki TO Sze-man (陶思敏小姐)
BSocSc III

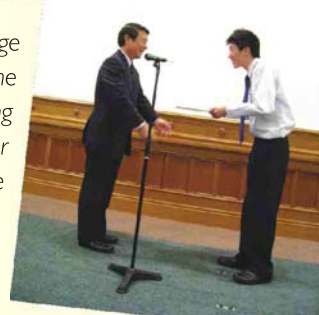


"It has always been my dream to go on an exchange programme as I think this is the only way to make me become fully globalized. But I never dreamt of having a chance to go to two different places in a single year and so I was totally fascinated by this programme when Professor MOK first introduced it to me. I promise to be a good ambassador for HKU wherever I go and grasp every single chance to learn. Thanks again to the Faculty for offering me this once-in-a-lifetime opportunity."

Mr Samson WONG Shun-hang (黃巽行先生)
BSC II

"Besides learning theories from lectures and tutorials at home and at school, I think this programme can provide us with a valuable chance to communicate with Japanese and Korean students. We will be the host and the guest, and I hope we can exchange numerous ideas about our different cultures within the shared context of East Asia."

Miss CHAN Wing-yee (陳穎兒小姐)
BSocSc III



ALUMNI

From 3 to 33, and Beyond ...

30th Anniversary 1978 BSocSc (Major in Social Work)

If you are curious what three years of university life can breed, here is an example.



▲ 23-24.8 two-day leisure tour to Shunde

In late August 2008, the graduates of the 1975-1978 BSocSc (major in Social Work) class came back to Hong Kong from the UK, Canada, Australia and Taiwan to celebrate their 30th graduation anniversary. Notwithstanding the interruption of an unexpected typhoon, their 33-year friendship seems to be growing stronger. Numerous activities organised for this special occasion were successfully completed. Above all, we have already formed a fresh committee to organize the celebration of their 35th anniversary reunion!

If you cannot grasp or share the feeling of being one of those who went through such a wonderful experience, here are some remarks from three members of the class, two of whom had to fly back either from their London office or Canadian residence for the functions:

"I am now back in London after a most memorable three-day celebration (a dim-sum lunch when typhoon signal No.9 was hoisted, and two wonderful days in Shunde). It is unbelievable that we first met in 1975 and we have known each other for almost 33 years. Though we might look slightly different with a few extra kilos and some grey hair, we have not changed much. Despite our age, we are still enthusiastic, passionate, energetic, devoted (to whatever we are doing) and caring. We sang many, many songs in the early hours on August 24 and talked about the good old days. I think our life now is even more colorful and meaningful since we know what we want and lead a life that we treasure. Our ever-growing friendship and unity are amazing because we are special. We are relatively simple but with principles and views; we all have different temperaments but we remain open, tolerating and appreciative; we talk a lot but we are also action-and result-orientated."

Ms Sarah WU from London



▲ Poem by Mr Sylvester KONG Siu-hong (江紹康先生)



▲ Photo disks of individual classmates

"The reunion highlights of the past few days have added more sweet memories to our reminiscence in the future. This time we've gained an extended celebration because of the typhoon. I agree that our class is special and I'm grateful and proud of being one of you. Over the last 30 years, we have had different classmates taking up the organizer role to maintain the group at different periods. I believe that has become our legacy."

Ms Bibiana CHAU in Hong Kong



"Me and my kids have had a wonderful three weeks in Hong Kong. The kids have already made plans to return. Being the financial sponsor, I am not so sure. As I am getting older and have experienced departures of many friends and families, I treasure each and every meeting/reunion. Yes, we are planning for another reunion for our 35th anniversary. Take care my friends and will see you soon!"

Ms Paulina LEE from Vancouver

Awarded "Leo of the Year 2008"



Global citizen is a term we often hear these days. As a social scientist, Emily HO Pui-yung has been enthusiastically serving and caring for the world.

Emily, a graduate in 2006, was recently given the "Leo of the Year 2008", an international award handed out by the Lions Clubs International. She was chosen from 150,000 members across 140 countries. This prestigious award honours young individuals who have demonstrated superior achievement. The Leo of the Year award values (1) leadership skills demonstrated, (2) scope of voluntary service projects initiated, (3) contribution to club development, (4) achievement in the community and (5) personal integrity.

To care for disadvantaged groups, among all projects, Emily initiated a "Love & Harmony" project in 2007-2008 with the Hong Kong Society for the Protection of Children. She invited over 10 different associations to the opening ceremony, workshop, family trip and carnival, serving thousands of low-income family members. Hundreds of volunteers were involved in promoting the themes of family harmony, community unity and environmental protection. She was also involved in leading the team in raising funds to rebuild a primary school in Tengxian, as well as heading two trips in 2006 to 2008, broadening the students' horizons about poverty in the Mainland.



"Reaching out to the community" has been Emily's mindset and she has been passionate about launching the project locally and globally for the needy and inviting more young individuals to volunteer. There is still somebody out there waiting for each of us to give a hand. Let us step forward and make our community a better place.

Ms Emily HO Pui-yung (何佩融女士)
BSocSc (2006)

The Faculty 40th Anniversary celebration video can now be viewed at: www.hku.hk/socsc/40th



Audience Award of "Macao Indies" in Macao Cultural Centre

Social Sciences graduate, Ms Cecilia HO Wing-yin, won the Audience Award for her first drug documentary, "Macao Indies", at the Macao Cultural Centre.

Ms Cecilia HO was awarded a Master of Philosophy (Sociology) in 2007 and she is now pursuing her PhD in the Department of Sociology. She is currently teaching social work at Macao Polytechnic Institute. Her research focus and teaching are mainly related to drug abuse issues. She has been living and working in Macao since 2006. In recent years, she has been enthusiastic about promoting film documentaries for social action, and she hopes to integrate social issues with filming in order to let the general public know more about marginal groups in the local community. Her first social documentary, "Left Them Behind" (被遺棄的針筒) was sponsored by Macao Local DocuPower 2007 (澳門紀錄新勢力2007) and initiated by Macao Cultural Centre (MCC). Chosen from among 15 independent films that were shown at the MCC on March 29, 2008, Cecilia's documentary won the Audience Award.



▲ The CCM Jury presents the Audience Award to Ms Cecilia HO (3rd from left) and other successful filmmakers.

Cecilia's drug documentary, "Left Them Behind," shows viewers the injecting process, examines why people take methadone but still inject drugs, and outlines how much is known about the issue in a Chinese society. The booming economy following the liberalization of Macao's gaming industry in 2002 has left the underprivileged behind. The film lasts 53mins and is interspersed with interviews with two Hong Kong-born Macao Chinese drug users sharing their fears and regrets about what they have done in the past. How do they present their mixed feelings about accepting their own identities as "drug addicts"? How are they able continue injecting heroin, which they find pleasurable and at the same time immoral, in a rapidly changing Macao?



▲ "Left Them Behind" (2008)/53mins/DV/Cantonese, with Chinese and English subtitles Directed by Cecilia HO; Email: ceciliaho@ipm.edu.mo

Ms Cecilia HO Wing-yin (何穎賢女士)
BSocSc (1997); MPhil (2007); PhD Candidate

Stay in touch

We would like to hear from all alumni, especially those who have not been in contact for some time. We wish to take this opportunity to invite you to share with the Faculty the contact details of local or overseas alumni with whom you are in touch. Please complete and return the following form to the Faculty so that we can keep them informed of the most up-to-date developments and activities of the Faculty and the University.

Fax: 2549 3341 / E-mail: socsc@hkucc.hku.hk

Part I : Your Information

Name : _____
(Surname) (Given Name)
Chinese Name : _____
Sex : M/F
Contact Phone No. : _____
E-mail: _____
Year of Graduation: _____
Degree Awarded: _____

Part II: Other Alumni's Information

Name : _____
(Surname) (Given Name)
Chinese Name : _____
Sex : M/F
Contact Phone No. : _____
E-mail: _____
Correspondence Address: _____
Year of Graduation: _____
Degree Awarded: _____

GLOBAL VISION PROGRAMME

SPANISH SEMESTER

The Spanish Semester was concluded successfully in April 2008. Throughout the second semester of the last academic year, the Consulate General of Spain and our School of Modern Languages and Cultures gave us tremendous support in arranging various activities not only for our students and staff but also for the general public. The Spanish Dinner, Flamenco Workshop, Traditional Spanish Music Performance by Tuna de Derecho de Valencia and Flamenco Jazz Performance by JerezTexas were just some of the exciting events. We also took our students to a gallery for a painting exhibition, saw a Spanish movie and organized a public lecture on cultural heritage. It was a wonderful cultural exchange experience for our students.



South African semester

Moving on to this semester, we have chosen a vibrant and ethnically diverse country, South Africa, as our theme country for the Faculty's Global Vision Programme. The kick-off event was the South African Dinner on Lantau Island on September 26. Watch out for other events at www.hku.hk/socsc/globalvision/sa. Do come and join us!



"Tempus fugit". As the new semester starts and I was invited to write this article, it signifies that the Society is turning to a new page by recruiting new executive committee members. Clarity, the 40th Cabinet, is moving towards this goal.

I swore, I worked hard, and I grew up. Life in the university and in Hong Kong is all about self-management. With scarce time and resources, all we can do is to make sacrifices and choices. Balancing different aspects of life is the only gateway to success, which is how the Society tries to help its members.

Making a function successful is never an easy task. In retrospect, we faced many challenges, but we managed to solve problems by adopting contingency plans. However formidable it was, we did not give up. Besides, meeting renowned public figures is always a rare and commendable event. We were able to learn from their inspiring speeches and see things from a different perspective. The Orientation Series reminded us of our days as freshmen, too.

Most importantly, we learned from each other, our dearest executive committee members. It is fortuitous for us, fourteen unique people, to meet up and to work

as hard as we could. We learned to compromise, care and comfort each other. Although we lost our way at times, we strived and we conquered together.

I am now proud and confident to say, I have no regret taking up this position and spending my precious time as a freshman. We, the 40th Cabinet, marked a new epoch in the history of the Society. We hold our hands with pride because we belong to the Society.

Mr Ian CHAN (陳以欣先生)
Internal Vice-Chairman
Social Sciences Society, HKUSU
Session 2008



EVENTS SPOTLIGHT



**SC Fan Memorial Lecture -
The Idea that is America:
A New View of America in the World**
April 17, 2008
Speaker: Professor Anne-Marie SLAUGHTER
Princeton University, USA

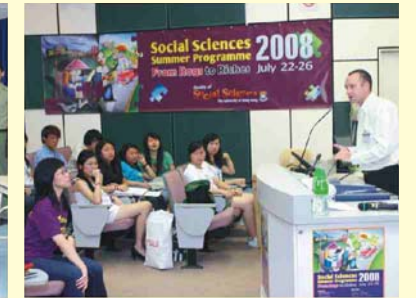


**Undergraduate Summer Institute -
Asia as the Global Future**
Hong Kong · Macau · Shanghai
Hangzhou · Seoul
June 22 - July 20, 2008

Research Postgraduate Conference
April 26, 2008



**Social Sciences Summer Programme -
From Rags to Riches**
July 22 - 26, 2008



**Forum - The Spirit of Democracy:
Can the Whole World Become
Democratic?**
May 16, 2008
Speaker: Professor Larry DIAMOND
Stanford University, USA



**Postgraduate Summer School:
Social Science Research Methods**
July 28 - August 28, 2008

The Research Grants Council Visit
June 18, 2008



**CADENZA Press Conference -
Does Very Hot Weather Warning
Reduce Mortality among Elderly
People in Hong Kong?**
July 31, 2008



**Symposium on "The Quest for Social
Cohesion in Greater China: Challenges
for Social Policy and Governance"**
June 20, 2008



**Serena Yang Distinguished Lecture -
Psychotherapy in Shame Culture
from a Dramatic Point of View**
September 25, 2008
Speaker: Professor Osamu KITAYAMA
Kyushu University, Japan

DONATIONS AND RESEARCH GRANTS (RGC)

Donations

(For the period February 2008 to August 2008)

Donor	Recipient	Nature	Amount (HK\$)
Telecoms Infotechnology Forum Ltd	Centre of Asian Studies	Telecommunications Research Project	64,000
Tung Wah Group of Hospitals		Oral History Project on the Collective Memories of Tung Wah	500,000
The Hong Kong Jockey Club Charities Trust		Hong Kong Memory Project	3,201,946
CHIANG Ching-kuo Foundation for International Scholarly Exchange		The Experiments with Democracy in East and Southeast Asia: Two Decades After Project	131,837
Mrs Dorothea CHUI-LI	Centre on Behavioral Health	Cancer and Family Relationships Project	10,000
Anonymous		Activities of the Centre	19,900
Anonymous		Activities of the Centre	11,815
Dr Peter CHEUNG Ka-hing		Activities of the Centre	20,000
Ms Jennifer LUI Wan-na		Activities of the Centre	20,000
Dr Ernest S W LEE	Department of Geography	CP Lo Scholarship	10,000
Dr WONG Fook-yee		CP Lo Scholarship	10,000
Mr Bosco FUNG Chee-keung		CP Lo Scholarship	10,000
Mr LO Chai-wan		CP Lo Scholarship	20,000
Mrs Margaret LO CHOY Yin-fon		CP Lo Scholarship	20,000
The Hong Kong Jockey Club Charities Trust	Department of Psychology	Read and Write: A Jockey Club Learning Support Network	49,878,670
Dr Terry LUM Yat-sang	Department of Social Work and Social Administration	1978 Alumni Travel Award and Project Fund	12,000
Anonymous		Activities of the Department	10,000
Dr Sandra TSANG Kit-man		Activities of the Department	30,000
Miss Florence IP Mo-fee		Activities of the Department	10,000
Mr CHAN Wing-kai		Activities of the Department	20,000
Mr Samson WONG King-fai		Activities of the Department	20,000
Mrs Ebrahim RUQAIYA		Activities of the Department	30,000
Ms Regina LUK Sau-ying		Activities of the Department	20,000
Ms Sarah WU Po-chu		Activities of the Department	100,000
Lee Hysan Foundation	Faculty of Social Sciences	Managing World Cities Project	150,000
HKU Social Sciences Alumni Association Ltd		Activities of the Faculty	16,600

Donations

(For the period February 2008 to August 2008)

Donor	Recipient	Nature	Amount (HK\$)
The International Association for Suicide Prevention	HKJC Centre for Suicide Research and Prevention	Support the 3 rd Asia Pacific Regional Conference of International Association for Suicide Prevention	116,798
Dr LEE Wai-yung	HKU Family Institute	Activities of the Institute	30,966
Wisdom King Co Ltd		Activities of the Institute	155,170

Research Grants

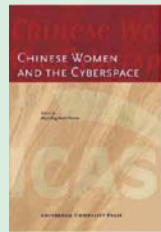
(Awarded by RGC 2008-2009)

Principal Investigator	Department	Project Title	Award (HK\$)
Dr VWT ZHENG	Centre of Asian Studies	Hong Kong as Financial Gateway for Taiwanese Enterprises	688,040
Dr SM NG	Centre on Behavioral Health	A Survey of 'Stagnation' among Hong Kong Chinese Adults in the Community	446,662
Dr BPY LOO		Rail-based Transit-oriented Development: Urban Structure and Geographical Characteristics	540,360
Dr D ZHANG		Climate Change and War-peace Cycles in Eurasia in the Recent Human History	293,700
Dr MA HART		Developing Typical Meteorological Year (TMY) Data Files Under Climate Change Scenarios for Use in Building Energy Simulations: A Case Study of Hong Kong and California	658,750
Dr EWY LEE	Politics and Public Administration	The Politics of Social Policy Development in Hong Kong: Societal Mobilization in a Semi-Democracy	395,992
Dr E LEE		Information Disclosure as a Tool for Pollution Abatement	864,600
Dr WF LAM		Understanding the Effects of Governance on Policy Agenda Dynamics in Hong Kong	1,064,000
Professor JCW CHAN		Confucian Political Philosophy: A Critical Reconstruction for Modern Times	805,552
Dr HCC HUI	Psychology	An Attributional Style Questionnaire for the Measurement of Optimism-pessimism among the Chinese Workforce	675,955
Dr L LI		An Investigation on the Influence of Concurrent Head Movement on Human Visual Perception of Object Motion	554,435
Dr SH CHEUNG		Are the Anatomical Connections of the Human Visual System Influenced by Amblyopic Visual Experience?	1,091,200
Dr WG HAYWARD		Recognizing Repeated Objects in Rapid Visual Streams	806,000
Professor KA LAIDLER	Sociology	The Meaning of Heroin Use in the Age of Psychoactive Drugs: Generational Perspectives	457,910

RECENT PUBLICATIONS (From February 2008 – September 2008)



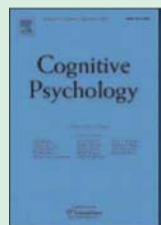
An Own-race Advantage for Components as well as Configurations in Face Recognition
 Authors: HAYWARD, W.G., RHODES, G. & SCHWANINGER, A.
 Journal: Cognition



Chinese Women and the Cyberspace
 Editor: KUAH-PEARCE, K.E.
 Publisher: Amsterdam University Press



Competition and Control in Public Hospital Reforms in Singapore
 Author: RAMESH, M.
 Journal: American Review of Public Administration



Folkbiology Meets Microbiology: A Study of Conceptual and Behavioural Change
 Authors: AU, T.K., CHAN, C.K.K., CHAN, T., CHEUNG, M.W.L., HO, J.Y.S., & IP, G.W.M.
 Journal: Cognitive Psychology



Human Trafficking
 Author: LEE, M.
 Publisher: Willan Publishing



Learning to Cooperate: China's Multilateral Approach toward Asian Financial Cooperation
 Author: SOHN, I.
 Journal: The China Quarterly



Perceiving the Environment from the Lay Perspective in Desertified Areas, Northern China
 Authors: LEE, F. & ZHANG, D.
 Journal: Environmental Management



Person Theories: Their Temporal Stability and Relation to Intertrait Inferences
 Authors: POON, C.S.K. & KOEHLER, D.J.
 Journal: Personality and Social Psychology Bulletin



Psychiatric History Modifies the Gender Ratio of Suicide: An East and West Comparison
 Authors: LIU, K.Y., CHEN E.Y., CHEUNG, A.S. & YIP, P.S.
 Journal: Social Psychiatry and Psychiatr Epidemiology



Public Perception and Behavior Change in Relationship to Hot Weather and Air Pollution
 Authors: SEMENZA, J., WILSON, D.J., PARRA, J., BONTEMPO, B.D., HART, M., SAILOR, D.J. & GEORGE, L.
 Journal: Environmental Research



Security and Migration in Asia: The Dynamics of Securitisation
 Authors: THOMAS, N., EMMERS, R. & GREENER-BARCHAM, B.
 Publisher: RoutledgeCurzon



School Bullying and the Mental Health of Junior Secondary School Students in Hong Kong
 Authors: NG, J.W.Y. & TSANG, S.K.M.
 Journal: Journal of School Violence



What are Mercenaries?
 Authors: STEINHOFF, U.B., In ALEXANDRA, A., BAKER, D. & CAPARINI, M.(Eds.), Private Military and Security Companies: Ethics, Policies and Civil-Military Relations.
 Publisher: Routledge



Years of Life Lost from Suicide in China, 1990 – 2000
 Authors: YIP, S.F., LIU, K.Y. & LAW, C.K.
 Journal: Crisis: The Journal of Crisis Intervention and Suicide Prevention



身份認同：台、港、澳的比較
 作者：鄭宏泰、黃紹倫
 期刊：當代中國研究

CONGRATULATIONS

Alumni

Congratulations to the following alumni of the Faculty of Social Sciences who have been given the Hong Kong Special Administrative Region Honours and Awards in recognition of their significant contributions to Hong Kong or for their dedicated public and community service.



Mr Patrick LAU Lai-chiu
 (劉勵超先生)
 BSocSc (1972)
 Silver Bauhinia Star (SBS)



Mr Anthony WONG Sik-kei
 (王錫基先生)
 MSocSc (1980)
 Silver Bauhinia Star (SBS)



Mr Alfred CHOW Cheuk-yu
 (周卓如先生)
 MSocSc (1985)
 Bronze Bauhinia Star (BBS)



Professor Angelina YUEN TSANG Woon-ki
 (阮曾媛琪教授)
 BSocSc (1975); PhD (1995)
 Bronze Bauhinia Star (BBS)

Students



Best Student Paper Award 2008 in China Geography Association of American Geographers

"I am honored to receive this award, which will encourage me to work harder in the future. I am especially grateful to Professor George LIN for his intellectual guidance. It would be impossible for me to succeed it without his assistance and support."

Miss WANG Chen (王琛小姐)
 PhD Candidate

Award in Quantum Apprentice 2008

"Quantum Apprentice is a 4-week systematic training program in sales and marketing skills, as well as communication and presentation techniques. I am so glad that our team has won the Client Satisfaction Award."

Miss Kristy CHAN Tan-na (陳丹娜小姐)
 BSocSc III (2008)



Academic Staff

Promotion



Professor Paul YIP Siu-fai (葉兆輝教授)
BSc (Melb), PhD, DCS (La Trobe)
Department of Social Work and Social Administration

New Appointments



Dr Zhansheng CHEN
(陳戰勝博士)
Assistant Professor
Department of Psychology



Dr Esther LAU
(劉月瑩博士)
Assistant Professor
Department of Psychology



Dr Shun LAU
(劉迅博士)
Assistant Professor
Department of Psychology



Dr Jeffrey SAUNDERS
Assistant Professor
Department of Psychology



Mr Benjamin LAW Cheuk-man
(羅卓文先生)
Teaching Consultant
Department of Psychology



Professor M RAMESH
(饒墨士教授)
Professor
Department of Social Work and Social Administration



Dr CHUI Wing-hong
(崔永康博士)
Associate Professor
Department of Social Work and Social Administration



Dr Pamela LEUNG Pui-yu
(梁佩如博士)
Assistant Professor
Department of Social Work and Social Administration



Dr KWONG Miu-ha
(鄭妙霞博士)
Teaching Consultant
Department of Social Work and Social Administration



Dr Cheris CHAN Shun-ching
(陳純菁博士)
Assistant Professor
Department of Sociology



Dr David Alexander PALMER
Assistant Professor
Department of Sociology



Dr Amy SIM Sock-chin
(沈淑真博士)
Assistant Professor
Department of Sociology



Miss Mary HO Ching-ching
(何晶晶小姐)
Teaching Consultant
Faculty of Social Sciences



Miss Carol LAU Pui-kwan
(劉珮君小姐)
Teaching Consultant
Faculty of Social Sciences

NEW LEADERS IN THE FACULTY



DR BECKY PY LOO 盧佩瑩博士

BA, PhD(HK), FCILT
Associate Dean, Faculty of Social Sciences
Associate Professor, Department of Geography

My geography training has enabled me to see distinctiveness in uniformity and to see uniformity in distinctiveness. Every pattern that we see is a matter of (spatial) scales. In a forest, each plant is unique but it also shares amazingly similar characteristics with other plants of the same species, in the same biome or on the same planet. Hong Kong, London and New York all share similar urban characteristics. Yet, they are all distinctive in ways that make these global cities unique and interesting. In the Faculty of Social Sciences, there are the Departments of Geography, Politics and Public Administration, Psychology, Social Work and Social Administration, and Sociology. This Faculty is diverse. Yet, we share similar research methodologies and appreciate the values of both quantitative and qualitative methods of inquiry for the betterment of human societies.

Geography also makes me observant and aware of global diversities not only of the physical environment but also of different cultures, economies and politics. For someone equipped with the essential geographical knowledge, experiencing the

different local geographies, such as the blizzard that covered everything in snow in Denver and the midday sun of 43 degree Celsius in Tunis, was truly impressive.



On an intellectual level, I found interacting with people from different backgrounds and cultures enriching and enjoyable. I am sharing a photograph



that we took in a restaurant in Helsinki, Finland. Sitting around the table were six geographers working on the information society; we were of six different nationalities speaking six different native languages — there were a Chinese (me), a Finn, a German, an Italian, a Swiss and an American. Who was who? It's an interesting exercise. I shall let you know when we meet next time!

Being the Associate Dean overseeing postgraduate studies, I believe that the research postgraduates may like to know more about my views on



postgraduate education. Personally, I think all fruitful and enjoyable research postgraduate experience must rest on a trusting supervisor-student relationship. Next, I always believe that a good research framework/methodology is as important as person's skeleton. Of course, we also need the other parts of the body (the hard work) and the soul (good research ethics and active participation) to make a person. Nonetheless, a good research methodology makes a great difference!

If this article is about me, it would not be complete without a paragraph on my family, especially my two lovely sons — Wilbert and Fabian — who always teach me that life is a journey full of challenges and happiness!



CAPE OF GOOD HOPE
THE MOST SOUTH-WESTERN POINT
OF THE AFRICAN CONTINENT



DR WILLIAM HAYWARD

BA, MA (University of Canterbury, NZ); MS, MPhil, PhD (Yale)
Head, Department of Psychology

I became Head of the Department of Psychology on September 1, 2008. I owe a tremendous debt of gratitude to the outgoing Head, Professor Terry AU, who has worked tirelessly on behalf of the Department and the Faculty over the last few years. The major challenge for me will be to consolidate the great advances that Terry has made in the way that the Department functions, while working with new issues over the next three years such as the upcoming four-year curriculum, the move to a new building on the Centennial Campus, and the development of a second-major in Cognitive Science.



having been at HKU for less than three years; another major responsibility for me as Head of



It is my great privilege to work in the Department of Psychology, which is an exciting place to teach and to conduct research. We have a lot of new academic colleagues, with almost half the professoriate staff

Department will be ensuring that my new colleagues have the space necessary to establish their own research programmes. In the meantime, I will work hard to ensure that we continue to improve upon our strong record of success in research publications, research grants, and teaching and that we reach out in search of new collaborations across the Faculty, University and community.

I am originally from New Zealand, and came to Hong Kong nine years ago to teach at the Chinese

University of Hong Kong; in January 2006, I joined HKU. My wife Sasha and I have two children, Max (5 years) and Alyssa (1 year). I spend much of my free time playing with my kids, who never fail to amaze me with their energy and creativity. In the rare event of having time to myself, I like to play and watch sport; as a New Zealander I am

duty-bound to support the "All Blacks" (use Google if you're not sure what they are!). I occasionally play soccer with other HKU staff, and you may see me crossing campus in the evening about to run home in order to keep fit!



PROFESSOR KAREN JOE LAIDLER

黎樂琪教授

BA, MA, PhD (Calif Davis)
Head, Department of Sociology

Having assumed the headship of the Sociology Department let me first take the opportunity to express my appreciation to the Faculty of Social Sciences Office for the invaluable experience I've gained in working as Associate Dean (Postgraduate Education). Over the past six and a half years, I've acquired, what I hope, is a fairly good working knowledge of the University, and the importance of communication.

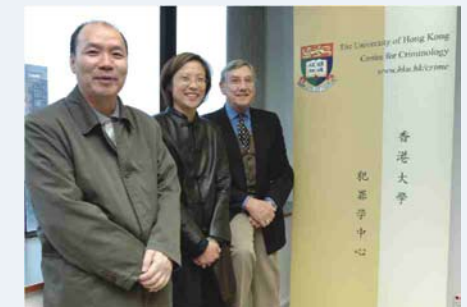
Also, in acknowledging the work of my predecessors, I along with colleagues hope to build on efforts



thus far, and strengthen the Department in its teaching and research activities in the coming years, given our clusters in Asian Societies and Global Networks, Criminal Justice and Media, Culture and Heritages. In this regard, I should brief you on a few recent developments. Those of you familiar

with the Department will be pleased to know that we are growing with the welcomed addition of several young talented scholars as well as some internationally established scholars. Their areas of expertise — from irregular migration to labor organizing to gender and sexuality, new religious movements and culture and globalization — fall within, what we see, as our distinctiveness as a sociological enterprise in Hong Kong, China, and at the same time, a reflection of the international scene.

With our growing team, I believe Sociology is in a good position to work on the upcoming changes to undergraduate education (3+3+4) and the broader demands of living in a global community.



FORTHCOMING EVENTS

October

Clinical Gerontology

Date: Oct 10-Nov 15, 2008 (5 sessions)
Venue: Rm 1327, KK Leung Building, HKU
Contact: Miss Carmen YIU
(Tel: 2241 5524; Email: ageing@hku.hk)

South African Semester - Wine Tasting

Date: Oct 20, 2008
Venue: Crown Wine Cellars, 18 Deep Water Bay Drive
Shouson Hill, Hong Kong
Contact: Miss Ulrica YIP
(Tel: 2859 1097; Email: ulricay@hku.hk;
Website: www.hku.hk/socsc/globalvision/sa)

Managing World Cities Inaugural Conference

Date: Oct 23, 2008 (Opening Ceremony and
Keynote Speeches)
Oct 24-25, 2008 (Roundtable Discussions)
Venues: Cliftons, Central, HK (23rd)
Council Chamber
Meng Wah Complex, HKU (24th-25th)
Website: www.hku.hk/socsc/mwc

3rd Asia Pacific Regional Conference of International Association of Suicide Prevention

Date: Oct 31-Nov 3, 2008
Venue: HKCEC, Wanchai
Contact: Miss Candy LEUNG
(Tel: 2241 5030; Email: csrp@hku.hk)

An Up-date Series on Dementia Management in Older Adults

Date: Oct-Nov, 2008 (4-6 sessions)
Contact: Miss Carmen YIU
(Tel: 2241 5524; Email: ageing@hku.hk)

Hong Kong Geography Day

Date: Oct-Nov, 2008 (4-6 sessions)
Venues: Rayson Huang Theatre, HKU (Opening Ceremony)
Run Run Shaw Building and
James Lee Science Building, HKU (Seminars)
Contact: Dr Maggi LEUNG
(Tel: 2859 7022; Email: mwhleung@hkucc.hku.hk)

November

Prize Presentation Ceremony

Date: Nov 8, 2008
Venue: Loke Yew Hall, Main Building, HKU
Contact: Miss Cynthia TAI
(Tel: 2859 1183; Email: ctai@hku.hk)

SC Fan Memorial Lecture

Speaker: Professor Timothy Garton ASH
Department of European Studies
University of Oxford
Date: Nov 17, 2008
Venue: Wang Gungwu Theatre, Graduate House, HKU
Contact: Miss Petty LEE
(Tel: 2241 5541; Email: pettylee@hku.hk)

Takako Nishizaki • Yukiko Fujikake Violin Studio Student Charity Concert

Date: Nov 23, 2008
Venue: Loke Yew Hall, Main Building, HKU
Contact: Miss Petty LEE
(Tel: 2241 5541; Email: pettylee@hku.hk)

International Conference on "Building Green Partnership for Sustainable Development: The Collaboration of Green NGOs, Businesses"

Date: Nov 29-30, 2008
Venues: Wang Gungwu Theatre, Graduate House, HKU
Graduate House's Seminar Rooms, HKU
Contact: Mr Tommy LIU
(Tel: 2859 7030; Email: twkliu@hkucc.hku.hk)

December

Forum on Family Policy

Date: Dec 3, 2008
Venue: Rayson Huang Theatre, HKU
Contact: Ms Kelly TSANG
(Tel: 2859 5300; Email: hkufi@hku.hk)

Faculty of Social Sciences Graduation Ceremony

Date: Dec 7, 2008
Venue: HKCEC, Wanchai
Contact: Miss Cynthia TAI
(Tel: 2859 1183; Email: ctai@hku.hk)

Positioning University in the Global World: Coping Strategies and Changing Governance in Asia

Date: Dec 10-11, 2008
Venue: Convocation Room, Main Building, HKU
Contact: Miss Teresa TSAI
(Tel: 2859 2460; Email: ttsai@hku.hk)

International Workshop on Geo-spatial Information Technology for Secondary School Education

Date: Dec 19-20, 2008
Venue: Hong Kong Baptist University
Contact: Dr PC LAI
(Tel: 2859 2830; Email: pclai@hkucc.hku.hk)

January

Adaptation & Integration in Ageing

Date: Jan-Apr, 2009 (12 Sessions, Every Tuesday)
Contact: Miss Carmen YIU
(Tel: 2241 5524; Email: ageing@hku.hk)

February

Health Governance and Security in Asia

Date: Feb 26-27, 2009
Venue: Council Chamber, Meng Wah Complex, HKU
Contact: Miss Teresa TSAI
(Tel: 2859 2460; Email: ttsai@hku.hk)

Societist

is published twice a year in Spring and Fall by the Faculty of Social Sciences, The University of Hong Kong. Electronic copies of *Societist* are available on the internet at www.hku.hk/socsc/newsletters. For hard copies of *Societist*, please e-mail us at socsc@hkucc.hku.hk.

The Faculty welcomes any form of contribution to *Societist*.

Editor-in-Chief

Professor Ian HOLLIDAY, Dean
(何立仁教授)

Editors

Professor KH MOK (莫家豪教授)
- Faculty of Social Sciences
Dr Amy YM CHOW (周燕雯博士)
- Department of Social Work and
Social Administration
Dr WM LAM (林蔚文博士)
- Department of Politics and
Public Administration

Editorial Assistants

Mrs Amy TSANG (曾梁惠慈女士)
Miss Vanessa SIT (薛曉霞小姐)
Dr Tiffany YING (英蒨網博士)
Miss Petty LEE (李思漫小姐)
Miss Cynthia TAI (戴志暉小姐)

Graphic Designer

Mr Tony LAM (林旋旋先生)

The Faculty of Social Sciences

reserves the right to publish and edit any material submitted for publication. Views expressed in *Societist* by contributors do not necessarily represent those of the Faculty or the University.

Faculty of Social Sciences

Room 401, Meng Wah Complex
The University of Hong Kong
Pokfulam Road, Hong Kong

Telephone: (852) 2859 1086
Fax: (852) 2517 0806
E-mail: socsc@hkucc.hku.hk
Website: www.hku.hk/socsc

All rights reserved.
Fall 2008