

SURVIVOR AND BEREAVEMENT CARE FROM BIOCIDES DISASTER AND THE ROLE OF SOCIAL WORK

SEUNGHOON OH

SEUNGHOON.OH@DURHAM.AC.UK



OUTLINE

- BACKGROUND & OBJECTIVES
- LITERATURE REVIEW & THEORETICAL FRAMEWORK
- METHODS
- RESULTS
- PRACTICES
- IMPLICATIONS

Background & Objectives

- The Korea Centre for Disease Control reported in 16th, 4, 2021 that the total number of deaths was 1,653, with a further 5,766 people suffering from lung damage and a wide range of rare diseases that were directly related to the use of Humidifier Disinfectant. Moreover, according to Supporters for Health and Rights of People in the Semiconductor Industry, the number of workers' illnesses is 368 and the death toll hits 134 within the electronic industry.
- To identify the social worker's role in coping with enhanced survivorship and bereavement care.

LITERATURE REVIEW AND FRAMEWORK

Oppression

- Young (1990) shows five faces of oppression: exploitation, marginalization, powerlessness, cultural Imperialism and violence.
- Dominelli (2002: 9) the exercise of power in social relationships primarily on the interpersonal level.
- Cudd (2006) defines violence as a force, economic forces and psychological harms

Beliefs

- Michael Polanyi
 - Tacit dimension
 - Commitment and fiduciary – act in affirmation of truth
 - Conviviality
 - Power
- Pierre Bourdieu
 - Doxa
 - Habitus
 - Field-Social Class
 - Symbolic violence

Luck

- Blind Luck – planning ahead
- Moral Luck – moral blame or praise for an unexpected action or consequences
- Epistemic Luck – conditions of knowledge and luck

CRITICAL ETHNOLOGY



Observation site: Seoul, South Korea



To immerse myself in the same situations the ethnographic research will be conducted through at least 10 hours of weekly participant observation in the field and to live near the hospital in South Korea for 9 months

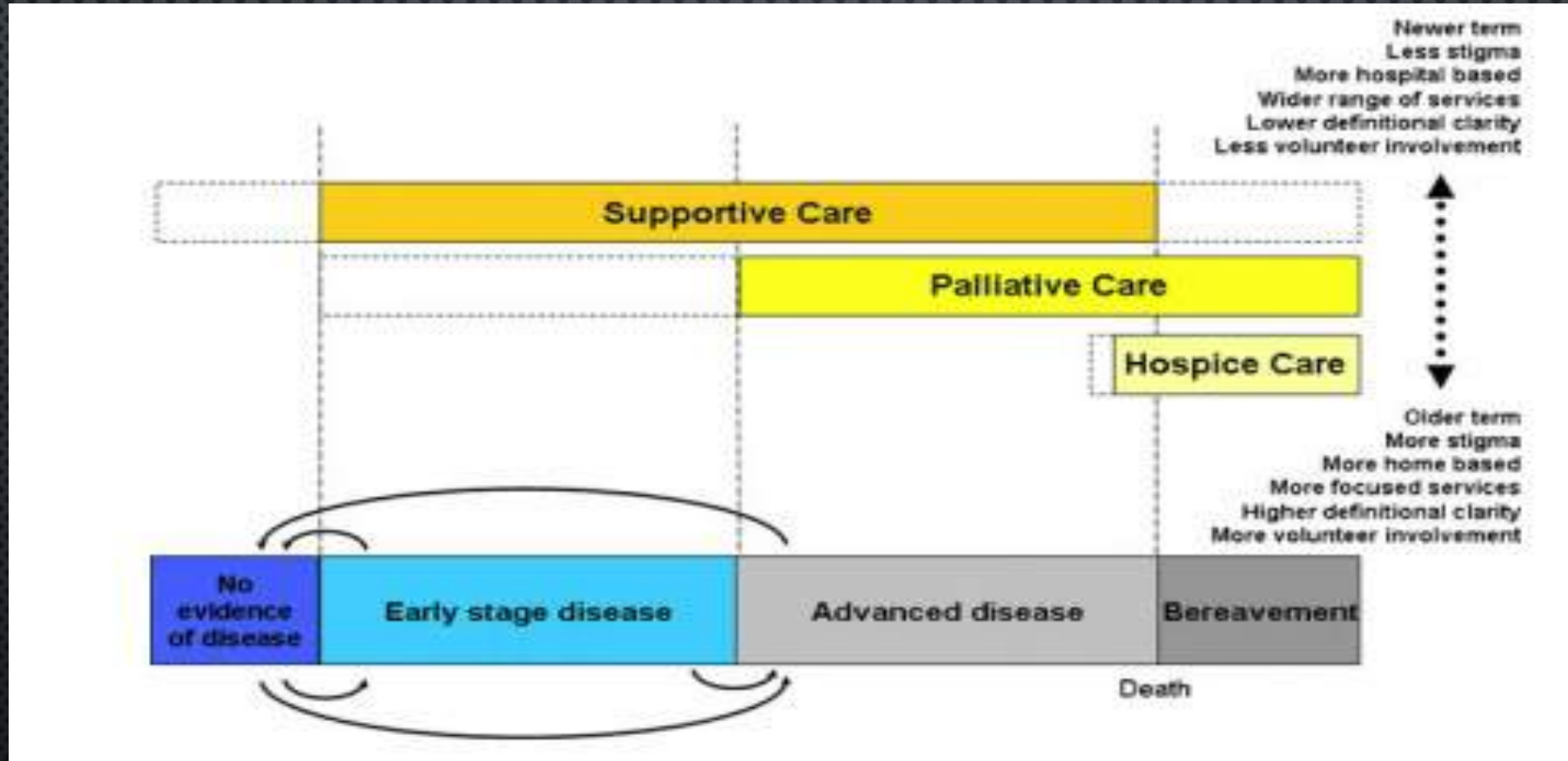


Three main methods of data collection are observation, semi-structured interviews (in total, 120 interviews took place), field notes and document analysis.



The research underwent full ethical review by the School of Applied Social Science's ethics committee at Durham University and the Institutional Review Boards in Korea gained full approval.

SUPPORTIVE, PALLIATIVE, HOSPICE AND BEREAVEMENT CARE



Supportive Care, Palliative Care and Hospice Care Hui, D., De La Cruz, M., D.H., 2013: 683

MULTI-LEVEL SYSTEMS: PAEDIATRIC PALLIATIVE CARE AND SOCIAL EPIDEMIOLOGY = 120

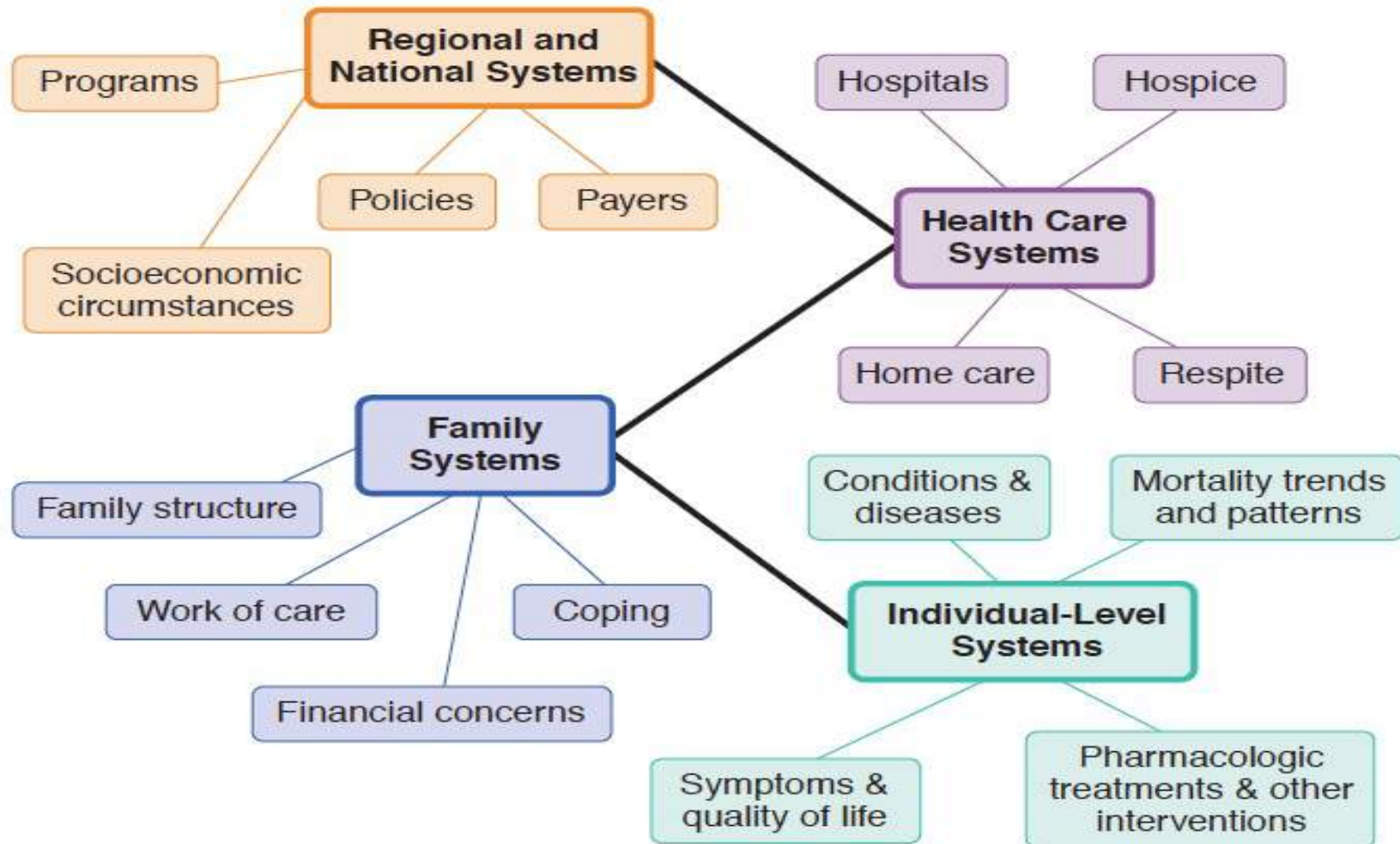
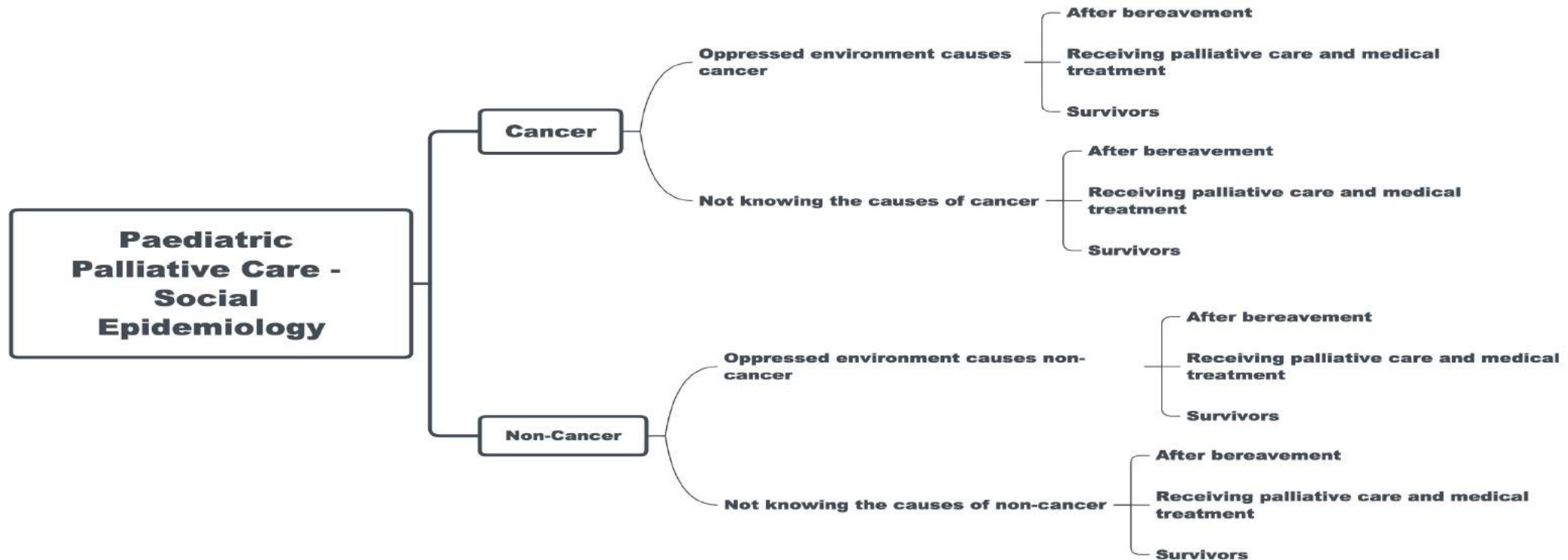
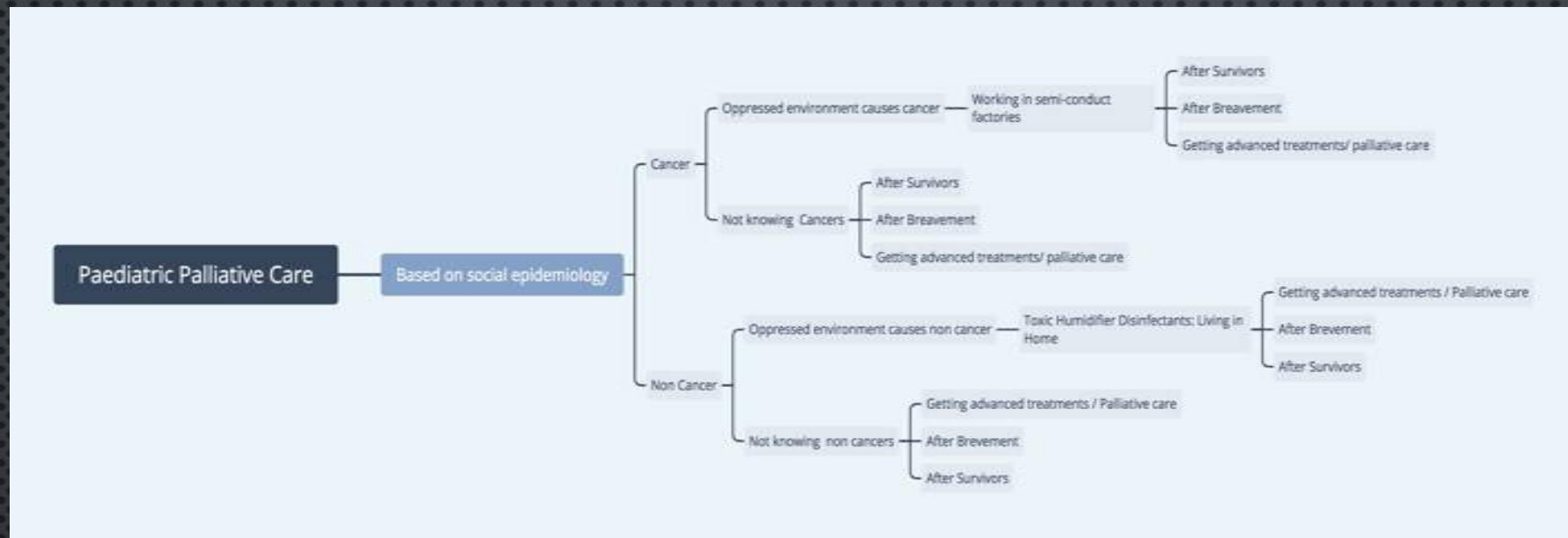


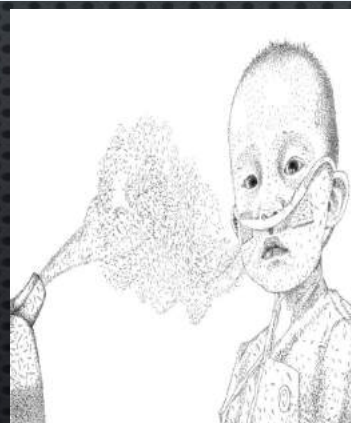
Fig. 2-1 Multi-level systems influencing experience of children receiving palliative or hospice care.

= 120 CANCER 50; NON-CANCER 15; SENIOR MEMBERS OF
PAEDIATRIC PALLIATIVE CARE TEAMS 14; LOCAL, NATIONAL AND
INTERNATIONAL DISCIPLINARY CONTEXTS IN DECISION-MAKING 41





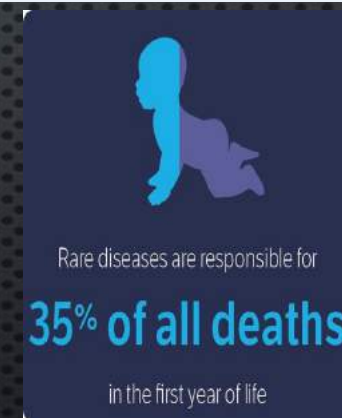
Death and Victims in Samsung Electronics Factories
After Octavia Kim, 2007



Death and Victims by Humidifier disinfectant as toxic chemicals' victims



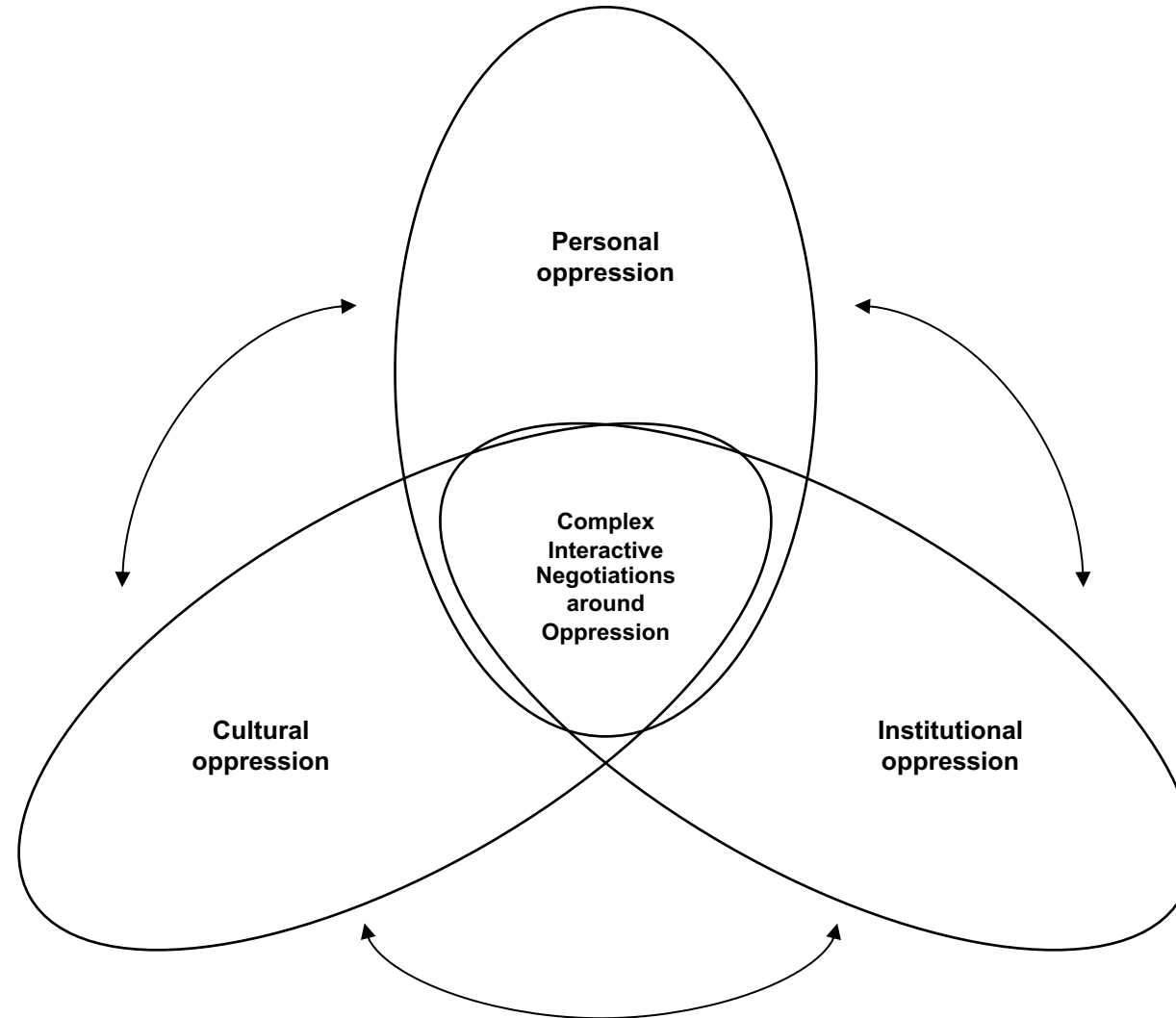
Palliative Care for Cancers



Palliative Care for Non-Cancers

(1) The role of social workers should require the alleviation of not only disaster-related grief but also the oppression found at local, national, and international levels

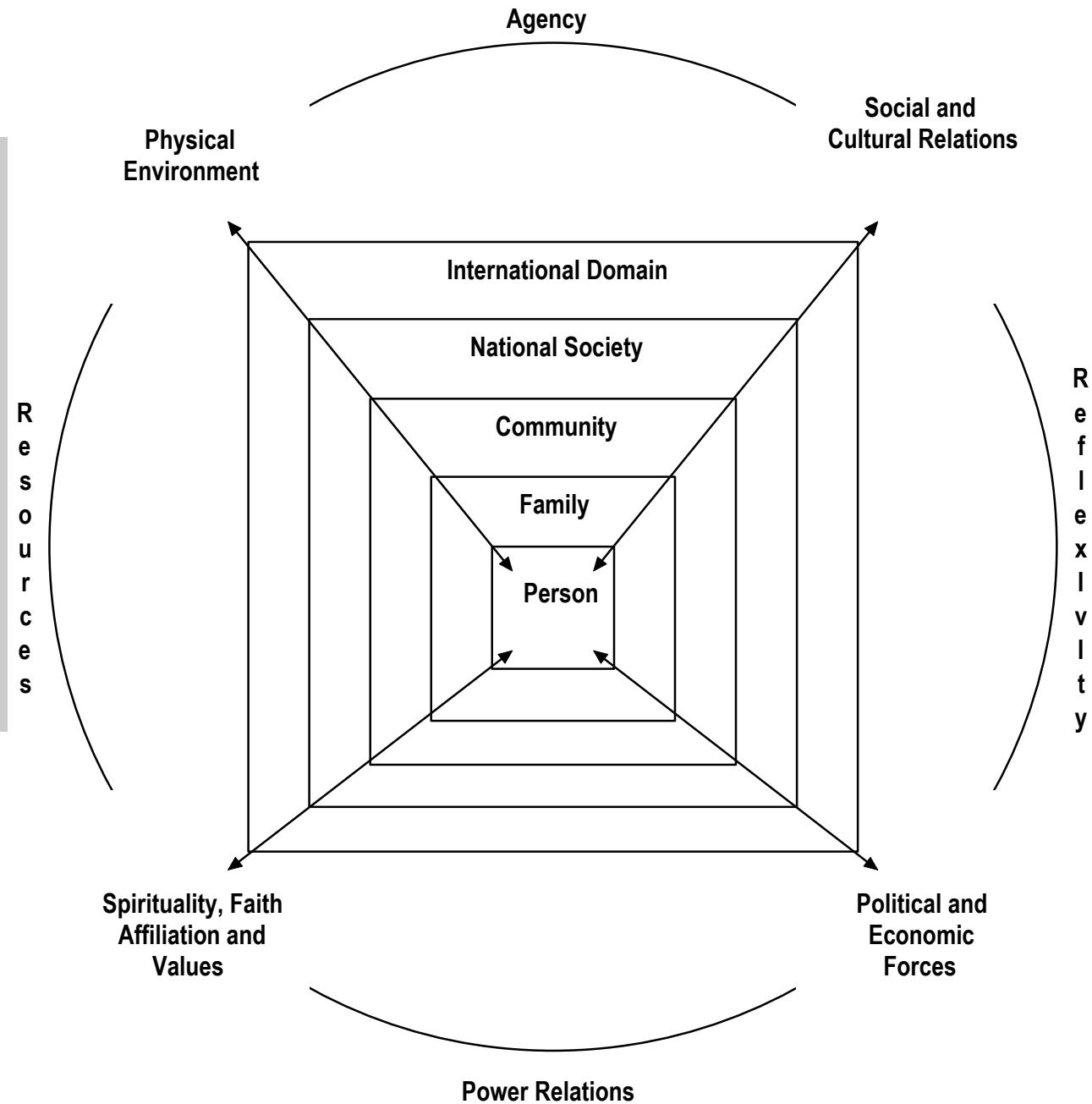
Interactive dimensions of oppression



Dominelli, L (2002) *Anti-Oppressive Social Work Theory and Practice* (Palgrave)

Holistic Intervention Chart For Empowering Anti-Oppressive Practice

Dominelli, L (2002) Anti-Oppressive
Social Work Theory and
Practice (Palgrave)



(2) FOCUSING ON THE PATIENT AND THEIR FAMILY MEMBERS CAN HELP TO ERADICATE THEIR OPPRESSION, HELPING TO DEAL WITH THEIR GUILTY FEELINGS IN SECURING BEREAVEMENT CARE AND EMBRACING THE CONCEPTS OF PARTICIPATION, PARTNERSHIP AND EMPOWERMENT

In July 2018, approximately 1,000 people made a chain around the Samsung buildings to mark 1,000 days of protest.

Samsung approached SHARPS the next month, saying it was willing to restart the conversation about compensation. The company agreed to let a mediator set the terms, which would be binding.

Two weeks later, the sidewalk protest was dismantled.



Hwang, right, poses with two Samsung executives after signing the mediation report released in November 2018. (Lee Jin-man/Associated Press)

'Let me die with my mother': Samsung to compensate sick workers, but many will never recover



Former workers and their families vow to fight on for safe working conditions

CBC Radio · January 29



STORIES FROM THE CLEAN ROOM

A DOCUMENTARY ABOUT WORKERS WHO ARE DYING
TO MAKE THE ELECTRONICS WE CANNOT LIVE WITHOUT

#ToxicsFreeElectronics
ipen.org/watch-clean-room-movie



HUMIDIFIER DISINFECTANT?

A **15 month** old Korean **baby died** in 2007 after exposure to OXY SSACK SSACK humidifier disinfectant made by **Reckitt Benckiser**

OXY is Korean branch of Reckitt Benckiser.

OXY SSACK SSACK is a brand name of OXY RB's hygiene goods for house

easy to clean?
easy to die!

300mL No harm to human with safe material.

99.9% disinfectant,
safe for babies?

My family used Reckitt Benckiser's humidifier disinfectant.
I lost 38-year-old my wife in 2011.
Reckitt Benckiser killed my wife.



TOXIC DISINFECTANT FOR HUMIDIFIERS

C/MIT/MIT

(5--chloro-2-methy- lisothiazol-3(2H)-one/2-methylisothiazol-3(2H)-one)

PHMG (PolyHexaMethyleneGuanide)

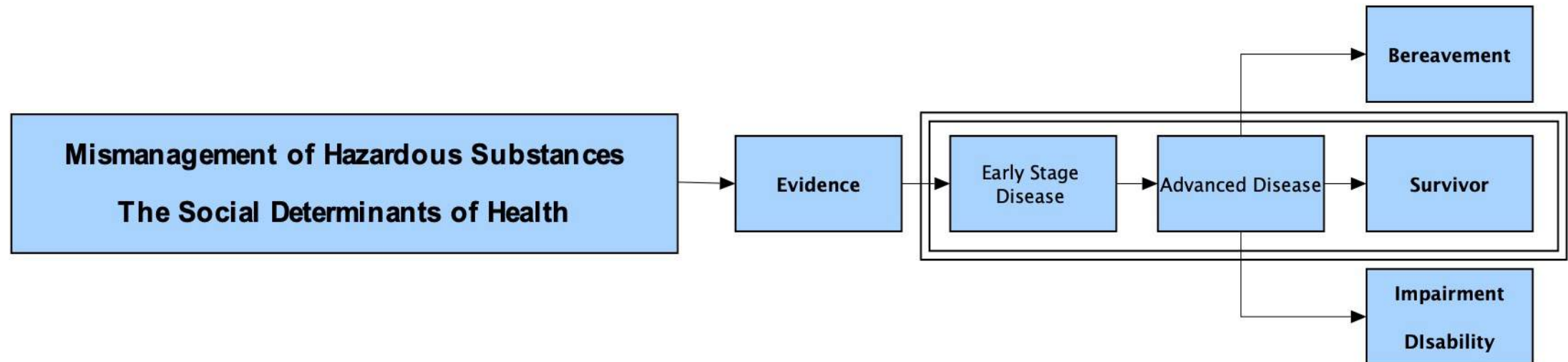
PGH (Ployoxyalkylene- Guanidine Hydrochloride)



OUT TO BOYCOTT OXY PRODUCTS



(3) THEIR ROLE SUGGESTS A REFRAMING HEALTH CARE TRANSITION IN COMMUNITY CARE BY USING ANTI-OPPRESSIVE PRACTICE.



IMPLICATIONS: AN ANTI-OPPRESSIVE PRACTICE IMPLEMENTED IN SOUTH KOREA EXEMPLIFIES ADDRESSING THE CONCEALED INFORMATION FOR SOCIAL JUSTICE. WHEN IDENTIFYING THE FORMS OF OPPRESSION, IT IMPLIES A MODEL OF ANTI-OPPRESSIVE PRACTICE FROM THE EFFECTS OF THE BIOCIDES DISASTER.

	Death and Victims in Samsung Electronics Factories After Octavia Kim, 2007	Death and Victims by disinfectant From 1994 Until 08.2011
Anti-oppressive practice	From 2007 to 2019 By SHARPS with bereaved-families and survivors	From 2011 to Now By Asian Citizen Centre for Environment and Health with bereaved-families and survivors
Institutional oppressors	Multinational Companies, Government, Mass Media, the Court	
Targets of oppression	Most Poor Female Jobseekers living in rural areas	Most Consumers, Patients- Children, Pregnant woman, Old People
Forms of resistance	From 2007 to Now Acts of Civil, Disobedience, Conscious-Raising Forums, Social Media, Activism	From 2011 to Now Acts of Civil, Disobedience, Conscious-Raising Forums, Social Media Activism , Product Boycotts, Making Laws, Making Social Disasters Commission
	To Enhance Supportive, Palliative, Hospice and Bereavement Care; To Enhance the health care and the right to health.	
Results	10 Cases of the Approved Industry Accidents Conscious-Raising Forums and International company apologies	Special act on remedy for damage caused by humidifier disinfectants and Starting Special Investigation Commission on social disaster from 2018 to 2021

CONCLUSION

ANTI-OPPRESSIVE PRACTICE: OPPRESSION, BELIEFS AND LUCK-BLAME/PRAISE



**THE FINDINGS SUGGEST THE
NEED TO ADDRESS OPPRESSION
AND LUCK IN THEIR CULTURAL
AND SOCIAL CONTEXT,
ALONGSIDE THE RIGHT TO
KNOW ABOUT DANGEROUS
CHEMICALS INITIATIVES FOR
PURSUING EFFECTIVE ANTI-
OPPRESSIVE PRACTICE WITHIN
A CROSS-AGENCY APPROACH.**

CHALLENGES OF PARTICIPANT OBSERVATION

	Interviewees	Researcher
Challenges	Psychological distress	Psychological distress Rejected 97 times
To be addressed	Before the interviews begin, I arranges for a suitably qualified professional counselor or hospice social workers	Debriefing with peer groups or professional colleagues

THANK YOU FOR YOUR ATTENTION!

SEUNGHOON OH

SEUNGHOON.OH@DURHAM.AC.UK



ADAMS, R., DOMINELLI, L., & PAYNE, M. (2002). *SOCIAL WORK: THEMES, ISSUES AND CRITICAL DEBATES*. MACMILLAN.

ALTILIO, T. AND OTIS-GREEN, S. EDS., (2011). *OXFORD TEXTBOOK OF PALLIATIVE SOCIAL WORK*. OXFORD UNIVERSITY PRESS.

APCSW (2016) 'THE ROLE OF SOCIAL WORKERS IN PALLIATIVE, END OF LIFE AND BEREAVEMENT CARE ASSOCIATION OF PALLIATIVE CARE SOCIAL WORKERS IN COLLABORATION WITH THE FORMER COLLEGE OF SOCIAL WORK AND MAKING WAVES LIVED EXPERIENCE NETWORK/OPEN FUTURES RESEARCH, WITH SUPPORT'.

BANKS, S. (2012). *ETHICS AND VALUES IN SOCIAL WORK. (FOURTH EDITION)*. BASINGSTOKE & NEW YORK: PALGRAVE MACMILLAN.

BANKS, S. & GALLAGHER, A. (2009). *ETHICS IN PROFESSIONAL LIFE: VIRTUES FOR HEALTH AND SOCIAL CARE*. BASINGSTOKE, HAMPSHIRE: PALGRAVE MACMILLAN.

BAUER M (1987) THE NARRATIVE INTERVIEW: ISSUES OF RECIPROCITY AND RISKS WHEN DEALING WITH SENSITIVE TOPICS", *QUALITATIVE INQUIRY*, 9(3):303- 335. INTERVIEW - OUTLINE AND COMMENTS ON A TECHNIQUE OF QUALITATIVE DATA COLLECTION, MANUSCRIPT, LSE, DEPARTMENT OF SOCIAL PSYCHOLOGY.

BEAUCHAMP, T. L., & CHILDRESS, J. F. (2013). *PRINCIPLES OF BIOMEDICAL ETHICS*, OXFORD, NEW YORK: OXFORD UNIVERSITY PRESS.

BECK, C. AND SHUE, V. (2003) 'SURROGATE DECISION-MAKING AND RELATED ISSUES', *ALZHEIMER DISEASE & ASSOCIATED DISORDERS*, 17, PP. S12-S16.

BERESFORD, P., ADSHEAD, L. AND CROFT, S., 2007. *PALLIATIVE CARE, SOCIAL WORK, AND SERVICE USERS: MAKING LIFE POSSIBLE*. JESSICA KINGSLEY PUBLISHERS.

BERG, L., SKOTT, C. AND DANIELSON, E. (2006) 'AN INTERPRETIVE PHENOMENOLOGICAL METHOD FOR ILLUMINATING THE MEANING OF CARING RELATIONSHIP', *SCANDINAVIAN JOURNAL OF CARING SCIENCES*, 20(1), PP. 42-50.

BERGO, B. (2011) EMMANUEL LEVINAS. AVAILABLE AT: [HTTPS://PLATO.STANFORD.EDU/ENTRIES/LEVINAS/](https://plato.stanford.edu/entries/levinas/) (ACCESSED: 13 JANUARY 2017).

BERRY, D. (2007). *COMMUNICATION BETWEEN PATIENTS AND PROFESSIONALS*. NEW YORK: MCGRAW-HILL, OPEN UNIVERSITY PRESS.

BETZLER, M. (ED.) (2008) *KANT'S ETHICS OF VIRTUE*. BERLIN: WALTER DE GRUYTER.

BUCHANAN, A. E. (1989). *DECIDING FOR OTHERS: THE ETHICS OF SURROGATE DECISION MAKING*. CAMBRIDGE UNIVERSITY PRESS.

BRUNDAGE, M., FELDMAN-STEWART, D., LEIS, A., ET AL. (2005). COMMUNICATING QUALITY OF LIFE INFORMATION TO CANCER PATIENTS: A STUDY OF SIX PRESENTATION FORMATS. *JOURNAL OF CLINICAL ONCOLOGY*, 23, 6949-6956.

CALDER, M.C., MCKINNON, M. AND SNEDDON, R. (2012) *NATIONAL RISK FRAMEWORK TO SUPPORT THE ASSESSMENT OF CHILDREN AND YOUNG PEOPLE 2012*. AVAILABLE AT: [HTTP://WWW.GOV.SCOT/RESOURCE/0040/00408604.PDF](http://www.gov.scot/resource/0040/00408604.pdf) (ACCESSED: 2 DECEMBER 2016).

CAMBRIDGE DICTIONARY (2016) *OPPRESSION MEANING IN THE CAMBRIDGE ENGLISH DICTIONARY*. AVAILABLE AT: [HTTP://DICTIONARY.CAMBRIDGE.ORG/DICTIONARY/ENGLISH/OPPRESSION](http://dictionary.cambridge.org/dictionary/english/oppression) (ACCESSED: 2 DECEMBER 2016).

CARPENTER, J., PATSIOS, D., SZILASSY, E. & HACKETT, S. (2011). OUTCOMES OF SHORT COURSE INTER-PROFESSIONAL TRAINING IN PARENTAL MENTAL ILLNESS AND CHILD PROTECTION SAFEGUARDING CHILDREN SELF-EFFICACY, ATTITUDES AND KNOWLEDGE. *SOCIAL WORK EDUCATION THE INTERNATIONAL JOURNAL* 30(2): 195-206.

CARR, D. AND CASEY, E.S. (EDS.) (1973) *EXPLORATIONS IN PHENOMENOLOGY*. THE HAGUE: MARTINUS NIJHOFF.

CHAN, G., BENNER, P. AND BRYKCYNSKI, K.A. (2010) *INTERPRETIVE PHENOMENOLOGY IN HEALTH CARE RESEARCH*. UNITED STATES: SIGMA THETA TAU INTERNATIONAL, CENTER FOR NURSING PRESS.

CHARMAZ, K., (2014). *CONSTRUCTING GROUNDED THEORY*. LONDON: SAGE.

CORBIN, J. AND MORSE, J. (2003) "THE UNSTRUCTURED INTERACTIVE

CORBIN, J. M. (1997). IN MEMORIAM: ANSELM L. STRAUSS. *QUALITATIVE HEALTH RESEARCH*, 7(1), 150-153.

CORRIGAN, O. (ED.). (2009). *THE LIMITS OF CONSENT: A SOCIO-ETHICAL APPROACH TO HUMAN SUBJECT RESEARCH IN MEDICINE*. OXFORD UNIVERSITY PRESS.

CRESWELL, J.W. (2007). *QUALITATIVE INQUIRY AND RESEARCH DESIGN: CHOOSING AMONG FIVE APPROACHES*, (2ND ED.). THOUSAND OAKS, CA: SAGE PUBLICATIONS.

CUDD, A.E. (2006) *ANALYZING OPPRESSION*. NEW YORK: OXFORD UNIVERSITY PRESS.

CUTCLIFFE, J. R. (2000). *METHODOLOGICAL ISSUES IN GROUNDED*. J ADV NURS, 31(6), 1476-1484.

DEBER, R., KRAETSCHMER, N., UROWITZ, S., ET AL. (2007). DO PEOPLE WANT TO BE AUTONOMOUS PATIENTS? PREFERRED ROLES IN TREATMENT DECISION-MAKING IN SEVERAL PATIENT POPULATIONS. *HEALTH EXPECTATIONS*, 10, 248–258.

DICKENSON, D. (1989). *MORAL LUCK IN MEDICAL ETHICS AND PRACTICAL POLITICS* ALDERSHORT: AVEBURY.

DOHERTY, S. (2005). EVIDENCE-BASED MEDICINE: ARGUMENTS FOR AND AGAINST. *EMERGENCY MEDICINE AUSTRALASIA*, 17(4), 307-313.

DOMINELLI, L. (1994) 'WOMEN, COMMUNITY WORK AND THE STATE IN THE 1990S.', *COMMUNITY WORK IN THE 1990S*.

DOMINELLI, L. (1996) 'DEPROFESSIONALIZING SOCIAL WORK: ANTI-OPPRESSIVE PRACTICE, COMPETENCIES AND POSTMODERNISM', *BRITISH JOURNAL OF SOCIAL WORK*, 26(2), PP. 153–175. DOI: 10.1093/OXFORDJOURNALS.BJSW.A011077.

DOMINELLI, L. (2002). *ANTI-OPPRESSIVE SOCIAL WORK THEORY AND PRACTICE*. PALGRAVE MACMILLAN.

DOMINELLI, L. (2005A). SOCIAL INCLUSION IN RESEARCH, *INTERNATIONAL JOURNAL FOR SOCIAL WELFARE*, 14(1): 13-22.

DOMINELLI, L. AND CAMPLING, J. (2002A) *ANTI-OPPRESSIVE SOCIAL WORK THEORY AND PRACTICE*. 4TH EDN. BASINGSTOKE: PALGRAVE MACMILLAN.

DOMINELLI, L. AND CAMPLING, J. (2002B) *FEMINIST SOCIAL WORK THEORY AND PRACTICE*. BASINGSTOKE: PALGRAVE MACMILLAN.

DOMINELLI, L.(2005B). *SOCIAL WORK RESEARCH: CONTESTED KNOWLEDGE FOR PRACTICE*, IN R. ADAMS, L. DOMINELLI AND M.PAYNE(EDS) *SOCIAL WORK FUTURES: CROSSING BOUNDARIES, TRANSFORMING PRACTICE*, NEW YORK: PALGRAVE MACMILLAN. 223-236.

DWORKIN, R. (1985). *A MATTER OF PRINCIPLE*. CAMBRIDGE, MA: HARVARD UNIVERSITY PRESS.

EDWARDS, A., & ELWYN, G. (EDS.). (2009). *SHARED DECISION-MAKING IN HEALTH CARE: ACHIEVING EVIDENCE-BASED PATIENT CHOICE*. OXFORD UNIVERSITY PRESS.

ELLIOTT, J., (2005). *USING NARRATIVE IN SOCIAL RESEARCH: QUALITATIVE AND QUANTITATIVE APPROACHES*. SAGE.

EMERSON, R. (2001). *CONTEMPORARY FIELD RESEARCH: PERSPECTIVES AND FORMULATIONS* (2ND ED.). ILLINOIS: WAVELAND PRESS.

EMERSON, R.M., FRETZ, R.I. AND SHAW, L.L., 2001. "PARTICIPANT OBSERVATION AND FIELDNOTES". *HANDBOOK OF ETHNOGRAPHY*, PP.352-368.

FERRIS, F.D., BRUERA, E., CHERNY, N., CUMMINGS, C., CURROW, D., DUDGEON, D., JANJAN, N., STRASSER, F., VON GUNTEN, C.F. AND VON ROENN, J.H., 2009. PALLIATIVE CANCER CARE A DECADE LATER: ACCOMPLISHMENTS, THE NEED, NEXT STEPS—FROM THE AMERICAN SOCIETY OF CLINICAL ONCOLOGY. *JOURNAL OF CLINICAL ONCOLOGY*, 27(18), PP.3052-3058.

GLASER, B. G. (1978). *THEORETICAL SENSITIVITY*. SOCIOLOGY PRESS. GLASER, B. G. (1992). *BASICS OF GROUNDED THEORY ANALYSIS: EMERGENCE VS FORCING*. SOCIOLOGY PRESS.

GLASER, B. G. (1998). *DOING GROUNDED THEORY: ISSUES AND DISCUSSIONS*. SOCIOLOGY PRESS.

GLASER, B. G., & STRAUSS, A. L. (1967). *THE DISCOVERY OF GROUNDED THEORY: STRATEGIES FOR QUALITATIVE RESEARCH*. CHICAGO: ALDINE.

GOLDMAN, A., HAIN, R. AND LIBEN, S., (2012). *OXFORD TEXTBOOK OF PALLIATIVE CARE FOR CHILDREN*. OXFORD UNIVERSITY PRESS.

GOODLEY, D. (2000). *SELF-ADVOCACY IN THE LIVES OF PEOPLE WITH LEARNING DIFFICULTIES: THE POLITICS OF RESILIENCE*. BUCKINGHAM: OPEN UNIVERSITY PRESS.

GRAEFF, A.D. AND DEAN, M. (2007) 'PALLIATIVE SEDATION THERAPY IN THE LAST WEEKS OF LIFE: A LITERATURE REVIEW AND RECOMMENDATIONS FOR STANDARDS', *JOURNAL OF PALLIATIVE MEDICINE*, 10(1), PP. 67–85.

HACKETT, S. (2012). "THE PLACE THAT THEORY PLAYS IN CHILD PROTECTION SOCIAL WORK". IN *SOCIAL WORK WITH CHILDREN AND FAMILIES*. DAVIES, M. PALGRAVE MACMILLAN. 121-134.

HACKETT, S. & TAYLOR, A. (2013). DECISION MAKING IN SOCIAL WORK WITH CHILDREN AND FAMILIES: THE USE OF EXPERIENTIAL AND ANALYTICAL COGNITIVE PROCESSES. *THE BRITISH JOURNAL OF SOCIAL WORK* 1-18.

HUTCHINSON, S. (1986). "GROUNDED THEORY: THE METHOD". IN MUNHALL, P. L. & OILER, C. J. *NURSING RESEARCH: A QUALITATIVE PERSPECTIVE*. NORWALK: APPLETON-CENTURY-CROFTS, 111-130.

HYMES, D., 1996. *ETHNOGRAPHY, LINGUISTICS. NARRATIVE INEQUALITY: TOWARDS AN UNDERSTANDING OF VOICE*. LONDON: TAYLOR AND FRANCIS.

ISRAEL, B. A., ENG, E., & SCHULZ, A. J. (EDS.). (2012). *METHODS FOR COMMUNITY-BASED PARTICIPATORY RESEARCH FOR HEALTH (2ND EDITION)*. SOMERSET, NJ, USA: JOHN WILEY & SONS.

ISRAEL, B. A., SCHULZ, A. J., PARKER, E. A., & BECKER, A. B. (1998). REVIEW OF COMMUNITY-BASED RESEARCH: ASSESSING PARTNERSHIP APPROACHES TO IMPROVE PUBLIC HEALTH. *ANNUAL REVIEW PUBLIC HEALTH*, 19(1), 173-202.

ISRAEL, B.A., SCHULZ, A.J., PARKER, E.A., BECKER, A.B., ALLEN, A., & GUZMAN, J.R. (2008). CRITICAL ISSUES IN DEVELOPING AND FOLLOWING CBPR PRINCIPLES. IN M. MINKLER & N. WALLERSTEIN (EDS.), *COMMUNITY-BASED PARTICIPATORY RESEARCH FOR HEALTH: FROM PROCESS TO OUTCOMES* (2ND ED., PP. 47-66). SAN FRANCISCO: JOSSEY-BASS.

JAMES, M. (2016) 'WHERE IS THE VOICE OF SOCIAL WORK IN THE MULTI DISCIPLINARY PALLIATIVE CARE TEAM?', *AOTEAROA NEW ZEALAND SOCIAL WORK*, 24(2), P. 49.

JEFFREY, B. AND TROMAN, G., (2004). TIME FOR ETHNOGRAPHY. *BRITISH EDUCATIONAL RESEARCH JOURNAL*, 30(4), PP.535-548.

JONES, B. (2004) 'TUCKED IN MY HEART' *THE ROLE OF SOCIAL WORK IN PEDIATRIC PALLIATIVE AND END-OF-LIFE CARE: A MIXED METHODOLOGY STUDY*.

JONES, B. (2007) 'PEDIATRIC PALLIATIVE AND END-OF-LIFE CARE: THE ROLE OF SOCIAL WORK IN PEDIATRIC ONCOLOGY', *JOURNAL OF SOCIAL WORK IN END-OF-LIFE & PALLIATIVE CARE*, 1(4), PP. 35–61.

JONES, B.L. (2006) 'PEDIATRIC PALLIATIVE AND END-OF-LIFE CARE', *JOURNAL OF SOCIAL WORK IN END-OF-LIFE & PALLIATIVE CARE*, 1(4), PP. 35–62.

KIM, M.S., LIM, N.G., KIM, H.J., KIM, C. AND LEE, J.Y., 2017. PEDIATRIC DEATHS ATTRIBUTED TO COMPLEX CHRONIC CONDITIONS OVER 10 YEARS IN KOREA: EVIDENCE FOR THE NEED TO PROVIDE PEDIATRIC PALLIATIVE CARE. *JOURNAL OF KOREAN MEDICAL SCIENCE*, 33(1).

LABOV, W., (1972). THE TRANSFORMATION OF EXPERIENCE IN NARRATIVE SYNTAX. *LANGUAGE IN THE INNER CITY*, 354, P.96.

LONGACRE, R.E., (1976). *AN ANATOMY OF SPEECH NOTIONS*. LISSE: PETER DE RIDDER PRESS.

MACINTYRE, A. (1985). *AFTER VIRTUE*, LONDON: DUCKWORTH.

MACINTYRE, A. (1990). *THREE RIVAL VERSIONS OF MORAL ENQUIRY*. THE GIFFORD LECTURES: UNIVERSITY OF NOTRE DAME PRESS.

MACINTYTYRE, A, (1988) *WHOSE JUSTICE? WHICH RATIONALITY?* NOTRE DAME, IN: UNIVERSITY OF NOTRE DAME PRESS.

MARSHALL, P.L. AND KOENIG, B.A., 2001. ETHNOGRAPHIC METHODS. *METHODS IN MEDICAL ETHICS*, PP.169-191.

MELE, C. (2013). TISSUE ENGINEERING WITH STEM CELLS: AN INNOVATIVE TECHNOLOGICAL TREATMENT IN PEDIATRICS DISORDERS. *JOURNAL OF PEDIATRIC NURSING*, 5(28), 504-507.

MINKLER, M., & WALLERSTEIN, N. (2003). *COMMUNITY-BASED PARTICIPATORY RESEARCH FOR HEALTH*. SAN FRANCISCO: JOHN WILEY.

MINKLER, M., & WALLERSTEIN, N. (EDS.). (2010). *COMMUNITY-BASED PARTICIPATORY RESEARCH FOR HEALTH : FROM PROCESS TO OUTCOMES (2ND EDITION)*. HOBOKEN, NJ, USA: JOSSEY-BASS.

MISHLER, E.G., (1986). THE ANALYSIS OF INTERVIEW-NARRATIVES (PP. 233-255). TR SARBIN (ED.), *NARRATIVE PSYCHOLOGY: THE STORIED NATURE OF HUMAN CONDUCT*.

MORSE, J.M. (2001) "INTERVIEWING ILL", IN J GUBRIUM AND J. HOLSTEIN (ED) *HANDBOOK OF INTERVIEW RESEARCH: CONTEXT & METHOD*, LONDON: SAGE.

MULLALY, R.P. (2002) *CHALLENGING OPPRESSION: A CRITICAL SOCIAL WORK APPROACH*. ONTARIO: OXFORD UNIVERSITY PRESS, CANADA.

NAGASAWA, YUJIN (2005). "PROXY CONSENT AND COUNTERFACTUALS", *BIOETHICS* 22, 16-24.

NAGEL, T., (1976). "MORAL LUCK", *PROCEEDINGS OF THE ARISTOTELIAN SOCIETY SUPPLEMENTARY* VOL. 50, PP. 137-55.

NAGEL, T., (1979) *MORTAL QUESTIONS*. CAMBRIDGE: CAMBRIDGE.

NOZICK, R. (1974). *STATE, ANARCHY, AND UTOPIA*, OXFORD: BASIL BLACKWELL.

PARKER OLIVER, D., WASHINGTON, K., DEMIRIS, G., WITTENBERG-LYLES, E., & NOVAK, H. (2012). PROBLEM SOLVING INTERVENTIONS: AN OPPORTUNITY FOR HOSPICE SOCIAL WORKERS TO BETTER MEET CAREGIVER NEEDS. *JOURNAL OF SOCIAL WORK IN END-OF-LIFE & PALLIATIVE CARE*, 8(1), 3-9.

PATTON, M. (2002) *QUALITATIVE RESEARCH AND EVALUATION METHODS*. LONDON: SAGE.

PAYNE, M. (2010) 'INEQUALITIES, END-OF-LIFE CARE AND SOCIAL WORK', *PROGRESS IN PALLIATIVE CARE*, 18(4), PP. 221-227.

PUGH, E., SONG, R., WHITTAKER, V. AND BLENKINSOPP, J. (2009) 'A PROFILE OF THE BELIEF SYSTEM AND ATTITUDES TO END-OF-LIFE DECISIONS OF SENIOR CLINICIANS WORKING IN A NATIONAL HEALTH SERVICE HOSPITAL IN THE UNITED KINGDOM', *PALLIATIVE MEDICINE*, 23(2), PP. 158-164.

RAWLS, J., (1971), *A THEORY OF JUSTICE*, CAMBRIDGE: HARVARD UNIVERSITY PRESS.

REEVES, S., KUPER, A. AND HODGES, B.D., 2008. QUALITATIVE RESEARCH METHODOLOGIES: ETHNOGRAPHY. *BMJ*, 337(AUG07_3), PP.A1020-A1020.

REITH, M. AND PAYNE, M., 2009. *SOCIAL WORK IN END-OF-LIFE AND PALLIATIVE CARE*. POLICY PRESS.

RESNIK, D. B., & KENNEDY, C. E. (2010). BALANCING SCIENTIFIC AND COMMUNITY INTERESTS IN COMMUNITY-BASED PARTICIPATORY RESEARCH. *ACCOUNTABILITY IN RESEARCH*, 17(4), 198-210.

SCHEFFLER, S. (2005). "CHOICE, CIRCUMSTANCE, AND THE VALUE OF EQUALITY", *POLITICS, PHILOSOPHY, AND ECONOMICS*, 4: 5-28.

- MARSHALL, P.L. AND KOENIG, B.A., (2001). ETHNOGRAPHIC METHODS. *METHODS IN MEDICAL ETHICS*, PP.169-191.
- SCHEFFLER, S. (2006). "IS THE BASIC STRUCTURE BASIC?", IN C. SYPNOWICH (ED.), *THE EGALITARIAN CONSCIENCE: ESSAYS IN HONOUR OF G. A. COHEN*, OXFORD: OXFORD UNIVERSITY PRESS, 102–129.
- SLOTE, M. (1989A). *BEYOND OPTIMIZING: A STUDY OF RATIONAL CHOICE*. NEW YORK: HARVARD UNIVERSITY PRESS.
- SLOTE, M. (1989B). *COMMON-SENSE MORALITY AND CONSEQUENTIALISM*. LONDON: ROUTLEDGE AND KEGAN PAUL.
- SLOTE, M. (1994). THE PROBLEM OF MORAL LUCK. *PHILOSOPHICAL TOPICS*, 22(1/2), 397-409.
- SLOTE, M. (2001). *MORALS FROM MOTIVES*. OXFORD: OXFORD UNIVERSITY PRESS.
- SLOTE, M. (2007). *THE ETHICS OF CARE AND EMPATHY*. LONDON: ROUTLEDGE.
- SLOTE, M. (2009). *ESSAYS ON THE HISTORY OF ETHICS*. NEW YORK: OXFORD UNIVERSITY PRESS.
- SLOTE, M. (2010). *MORAL SENTIMENTALISM*. NEW YORK: OXFORD UNIVERSITY PRESS.
- SLOTE, M. (2011). *THE IMPOSSIBILITY OF PERFECTION: ARISTOTLE, FEMINISM, AND THE COMPLEXITIES OF ETHICS*. NEW YORK: OXFORD UNIVERSITY PRESS.
- SMITH, R. (2008). *SOCIAL WORK AND POWER*. PALGRAVE.
- STEVENS, S.S., (1946). ON THE THEORY OF SCALES OF MEASUREMENT. *SCIENCE. VOLUME 103. ISSUE 2684*. PP.677 - 680.
- STRAUSS, A. L. (1987). *QUALITATIVE ANALYSIS FOR SOCIAL SCIENTISTS*. CAMBRIDGE UNIVERSITY PRESS.
- STRAUSS, A. L., & CORBIN, J. (1990). *BASICS OF QUALITATIVE RESEARCH: GROUNDED THEORY PROCEDURES AND TECHNIQUES*. SAGE PUBLICATIONS.
- STRAUSS, A. L., & CORBIN, J. (1998). *BASICS OF QUALITATIVE RESEARCH: TECHNIQUES AND PROCEDURES FOR DEVELOPING GROUNDED THEORY* (2ND ED.). SAGE PUBLICATIONS.
- STRIER, R. (2007). ANTI-OPPRESSIVE RESEARCH IN SOCIAL WORK: A PRELIMINARY DEFINITION. *BRITISH JOURNAL OF SOCIAL WORK*, 37(5), 857-871.
- STRINGER, S. (2013) 'MORAL CHOICES IN END OF LIFE CARE FOR CHILDREN', *CANCER NURSING PRACTICE*, 12(7), PP. 27–32.
- TOWLE, A., GODOLPHIN, W., GRAMS, G., ET AL. (2006). PUTTING INFORMED AND SHARED DECISION MAKING INTO PRACTICE. *HEALTH EXPECTATIONS*, 9, 321–332.
- VAN DIJK, T.A., (1993). *STORIES AND RACISM. NARRATIVE AND SOCIAL CONTROL: CRITICAL PERSPECTIVES*, PP.121-42.
- WELSH, A. (1994). *FREUD'S WISHFUL DREAM BOOK*. PRINCETON UNIVERSITY PRESS.
- WOLCOTT, H.F., (2005). *THE ART OF FIELDWORK*. LONDON SAGE.
- WRIGLEY, A. (2007) 'PROXY CONSENT: MORAL AUTHORITY MISCONCEIVED', *JOURNAL OF MEDICAL ETHICS*, 33(9), PP. 527–531.
- YEUNG, K. S. S., HO, A. P. Y., LO, M. C. H., & CHAN, E. A. (2010). SOCIAL WORK ETHICAL DECISION MAKING IN AN INTER-DISCIPLINARY CONTEXT. *BRITISH JOURNAL OF SOCIAL WORK*, 40(5), 1573-1590.
- CROWELL, S., BRAINARD, M., EMAD, P., SALLIS, J. AND IERNA, C. (2012) *THE NEW YEARBOOK FOR PHENOMENOLOGY AND PHENOMENOLOGICAL PHILOSOPHY: VOLUME 6*. EDITED BY BURT HOPKINS. LONDON AND NEW YORK: ROUTLEDGE.
- DAVIDSEN, A.S. (2013) 'PHENOMENOLOGICAL APPROACHES IN PSYCHOLOGY AND HEALTH SCIENCES', *QUALITATIVE RESEARCH IN PSYCHOLOGY*, 10(3), PP. 318–339.
- FINLAY, L. (2009) 'DEBATING PHENOMENOLOGICAL RESEARCH METHODS', *PHENOMENOLOGY & PRACTICE*, 3(1), PP. 6–25.

FOX, S. AND CHESLA, C. (2008) 'LIVING WITH CHRONIC ILLNESS: A PHENOMENOLOGICAL STUDY OF THE HEALTH EFFECTS OF THE PATIENT-PROVIDER RELATIONSHIP', *JOURNAL OF THE AMERICAN ACADEMY OF NURSE PRACTITIONERS*, 20(3), PP. 109-117

HAND, S. (2009) *EMMANUEL LEVINAS*. LONDON AND NEW YORK: ROUTLEDGE.

KATZ, J. AND CSORDAS, T.J. (2003) 'PHENOMENOLOGICAL ETHNOGRAPHY IN SOCIOLOGY AND ANTHROPOLOGY', *ETHNOGRAPHY*, 4(3), PP. 275-288. DOI: 10.1177/146613810343001.

LAWTON, J. (2000) *THE DYING PROCESS: PATIENTS' EXPERIENCES OF PALLIATIVE CARE*. LONDON AND NEW YORK: ROUTLEDGE.

LÉVINAS, E., LEVINAS, E. AND LINGIS, A. (1980) *TOTALITY AND INFINITY: AN ESSAY ON EXTERIORITY* (MARTINUS NIJHOFF PHILOSOPHY TEXTS). 3RD EDN. DORDRECHT: KLUWER ACADEMIC PUBLISHERS.

LÉVINAS, E., LÉVINAS, E., LINGIS, A., LEVINAS, E. AND COHEN, R.A. (1999) *OTHERWISE THAN BEING, OR, BEYOND ESSENCE*. 5TH EDN. PITTSBURGH, PA: DUQUESNE UNIVERSITY PRESS.

LÉVINAS, E., LÉVINAS, E., NEMO, P., COHEN, R.A., LEVINAS, E. AND COHEN, R. (1985) *ETHICS AND INFINITY: CONVERSATIONS WITH PHILIPPE NEMO*. PITTSBURGH: DUQUESNE UNIVERSITY PRESS.

LOPEZ, K.A. AND WILLIS, D.G. (2004) 'DESCRIPTIVE VERSUS INTERPRETIVE PHENOMENOLOGY: THEIR CONTRIBUTIONS TO NURSING KNOWLEDGE', *QUALITATIVE HEALTH RESEARCH*, 14(5), PP. 726-735.

MAGGS-RAPPORT, F. (2000) 'COMBINING METHODOLOGICAL APPROACHES IN RESEARCH: ETHNOGRAPHY AND INTERPRETIVE PHENOMENOLOGY', *JOURNAL OF ADVANCED NURSING*, 31(1), PP. 219-225.

MORAN, D. (2000) *INTRODUCTION TO PHENOMENOLOGY*. LONDON: TAYLOR & FRANCIS.

MORGAN, MICHAEL L (2007) *DISCOVERING LEVINAS*. CAMBRIDGE, NEW YORK: CAMBRIDGE UNIVERSITY PRESS.

PAREKH, S. (2008) *HANNAH ARENDT AND THE CHALLENGE OF MODERNITY: A PHENOMENOLOGY OF HUMAN RIGHTS*. LONDON: ROUTLEDGE.

RICOEUR, P. (1975) 'PHENOMENOLOGY AND HERMENEUTICS', *NOÛS*, 9(1), P. 85. DOI: 10.2307/2214343.

SMART, B. (2014) *SOCIOLOGY, PHENOMENOLOGY AND MARXIAN ANALYSIS A CRITICAL DISCUSSION OF THE THEORY AND PRACTICE OF A SCIENCE OF SOCIETY*. NEW YORK: ROUTLEDGE.

SMITH, J.A., FLOWERS, P. AND LARKIN, M. (2009) *INTERPRETATIVE PHENOMENOLOGICAL ANALYSIS: THEORY, METHOD AND RESEARCH*. LOS ANGELES: SAGE PUBLICATIONS.

SPIEGELBERG, E. (ED.) (2013) *DOING PHENOMENOLOGY: ESSAYS ON AND IN PHENOMENOLOGY* (VOL. 63). SPRINGER SCIENCE & BUSINESS MEDIA.

SVENAEUS, F., SVENAEUS, F. AND KUSHNER, T.K. (2001) *THE HERMENEUTICS OF MEDICINE AND THE PHENOMENOLOGY OF HEALTH: STEPS TOWARDS A PHILOSOPHY OF MEDICAL PRACTICE*. EDITED BY DAVID C. THOMAS AND DAVID N. WEISSTUB. DORDRECHT: KLUWER ACADEMIC PUBLISHERS.

THOMAS, L. (2004) *EMMANUEL LEVINAS: ETHICS, JUSTICE, AND THE HUMAN BEYOND BEING*. NEW YORK & LONDON: ROUTLEDGE.

THOMAS, S.P. AND POLLIO, H.R. (2002) *LISTENING TO PATIENTS: A PHENOMENOLOGICAL APPROACH TO NURSING RESEARCH AND PRACTICE*. NEW YORK: SPRINGER PUBLISHING CO.

VAN MANEN, M. (2014) *PHENOMENOLOGY OF PRACTICE: MEANING-GIVING METHODS IN PHENOMENOLOGICAL RESEARCH AND WRITING*. NEW YORK, NY, UNITED STATES: LEFT COAST PRESS.

WILD, J. (1959) 'CONTEMPORARY PHENOMENOLOGY AND THE PROBLEM OF EXISTENCE', *PHILOSOPHY AND PHENOMENOLOGICAL RESEARCH*, 20(2), P. 166. DOI: 10.2307/2104354.

YONHAPNEWS, (2018) *소아 말기환자 연간 1천명인데... 호스피스 병원 단 2 곳* TRANSLATED "PAEDIATRIC PATIENTS INCREASE BY ONE THOUSAND PER YEAR, BUT ONLY TWO HOSPICE HOSPITALS ARE ACCESSIBLE FOR CHILDREN. AVAILABLE AT: [HTTP://WWW.YONHAPNEWS.CO.KR/BULLETIN/2018/01/08/02000000000AKR20180108144900017.HTML](http://www.yonhapnews.co.kr/BULLETIN/2018/01/08/02000000000AKR20180108144900017.HTML), (ACCESSED:19 SEPTEMBER 2018)

WOLFE, J., HINDS, P. AND SOURKES, B., (2011). *TEXTBOOK OF INTERDISCIPLINARY PEDIATRIC PALLIATIVE CARE E-BOOK: EXPERT CONSULT PREMIUM EDITION*. ELSEVIER HEALTH SCIENCES.