

from
Old Tai Po Police Station (1898-2014)
to a
Green Hub for Sustainable Living (2015-XXXX)

Idy Wong
2 December 2015



Old Tai Po Police Station



Symbol of Authority
A Monumental Place
Milestone of Public Order



The Green Hub



Symbol of New Chapter for Green Living
A Place for People and Community
Milestone of Positive Changes that will have Deep Influence to HK & South China.

Climate **Change**, our future & **Low** Carbon Living

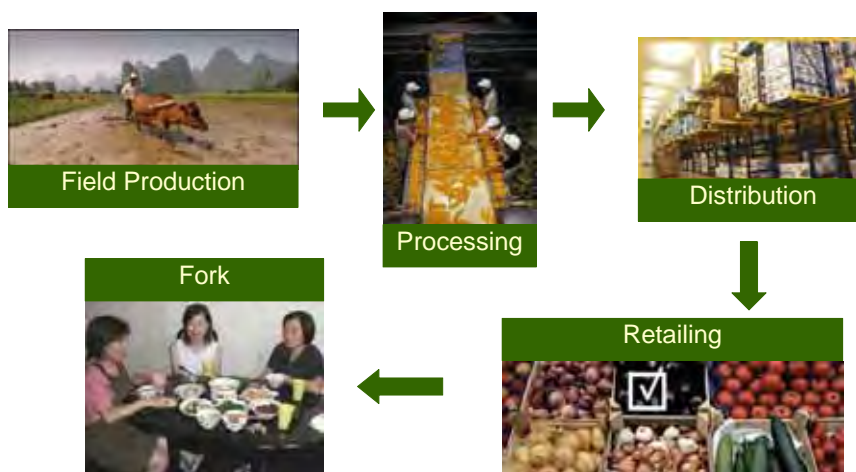
Hong Kong

Today, almost **all** food consumed by Hong Kong is imported, from around **150** countries, and

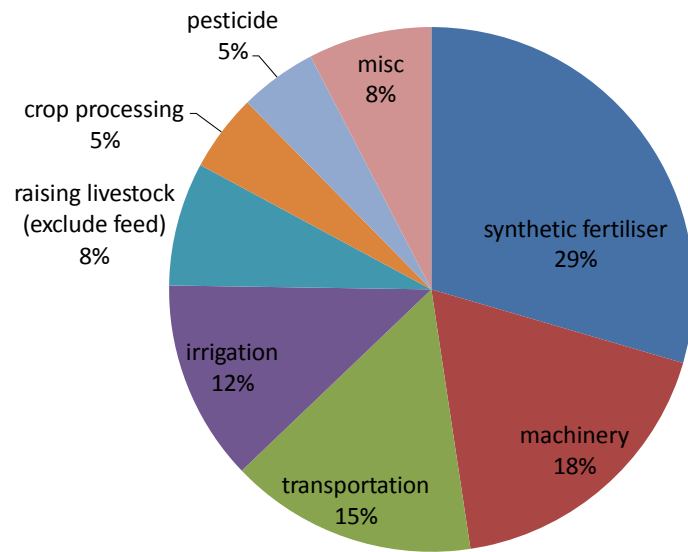


> 3,600 tonnes of food is **dumped** at landfill every day

Food System



>10 calories of fossil fuel energy is consumed to produce **every calorie** of food.

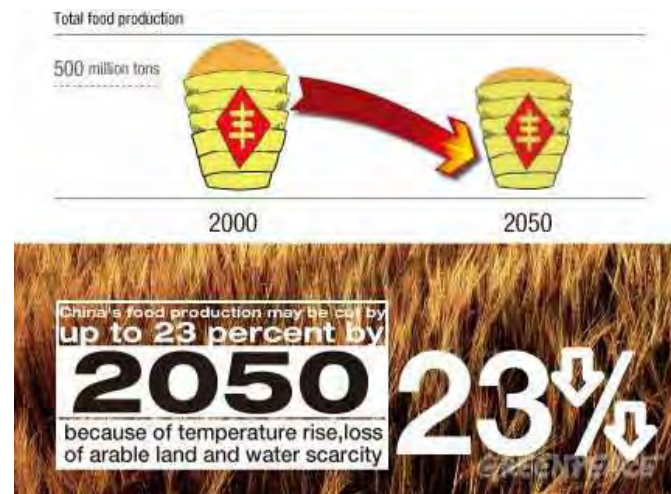


The Green Revolution increased the energy flow to agriculture by an average of 50 times than the energy input of traditional agriculture.

Source: http://www.fromthewilderness.com/free/ww3/100303_eating_oil.html

Global Food System is intensifying climate change

Climate Change is affecting food production



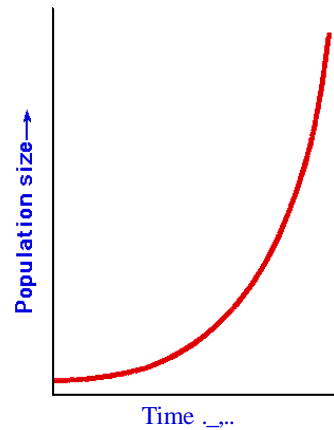
Source: <http://www.greenpeace.org/eastasia/press/releases/climate-energy/2008/food-security-climate-change/>

$$P = P_0 \times e^{rt}$$

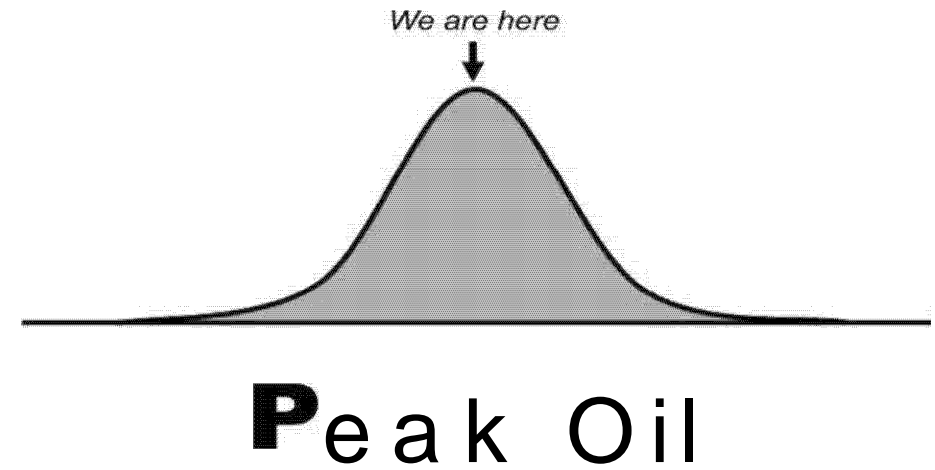
Labels for the formula:

- P : Total population after time 't'
- P_0 : Starting population
- e : Euler number = 2.71828....
- r : % rate of growth
- t : Time in hours or years

Population Growth Formula



Wake up!!!



**HK's
self-sufficiency
on food...**

2% (fresh vegetable only...)



Energy Descent

(reducing our reliance on fossil fuel)

LOW CARBON LIVING



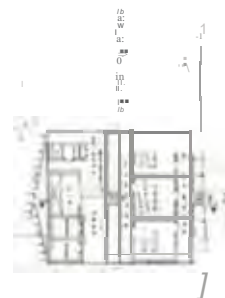
Integrated Conservation of Historical, Architectural, Ecological and Cultural Heritage





the process of revitalization...





11 5

1958



Heritage education



2012



2012



2015

Low Carbon Operation

Energy Descent
reducing our reliance on fossil fuel



2012



2015



Inner Courtyard in 2012



Inner Courtyard in 2012





Low Carbon Residential Experience

Energy Descent
reducing our reliance on fossil fuel





Eat Well
= (soil
+ soul
+ society)
x resilience



Pumpkin & Eggplant Salad
in Green Hub's Special
dressing

Yam Bean in Seaweed Dressing

Humus with air-dried
cucumber

Vegetable cracker with vegetable in
season: from potato leave to
mustard leave.



The tray is made of the most sustainable wood
with the least mileage

Low Carbon FOOD

low food mileage + fair-trade + local economy + organic + healthy + plant-based
+ seasonal + light cooking + no wastage

Energy Descent
reducing our reliance on fossil fuel



2012

Reconnecting with SOIL, SOUL & SOCIETY



2015



Holistic conservation

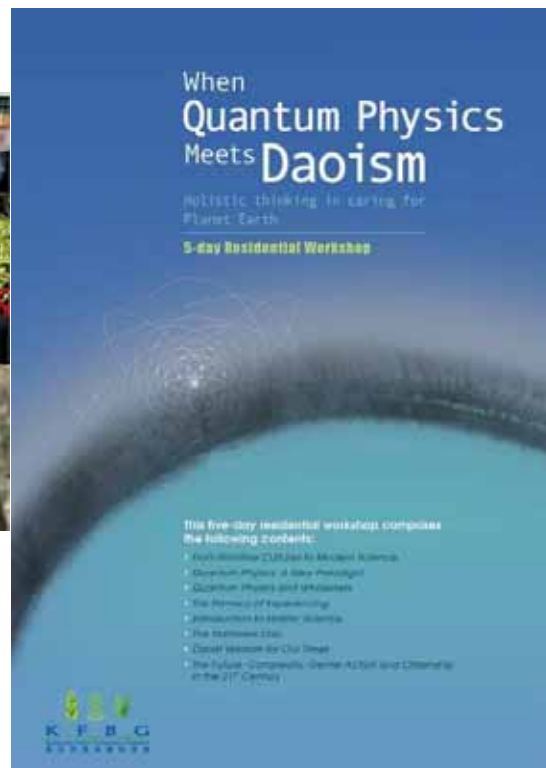
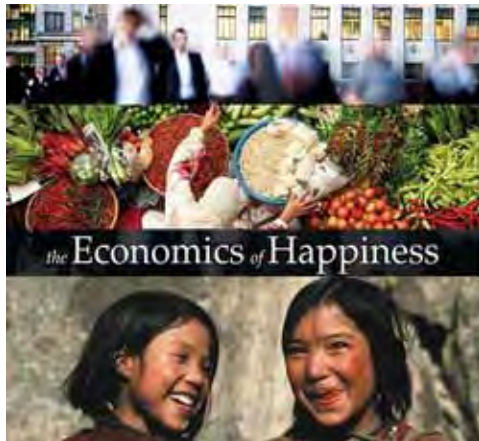
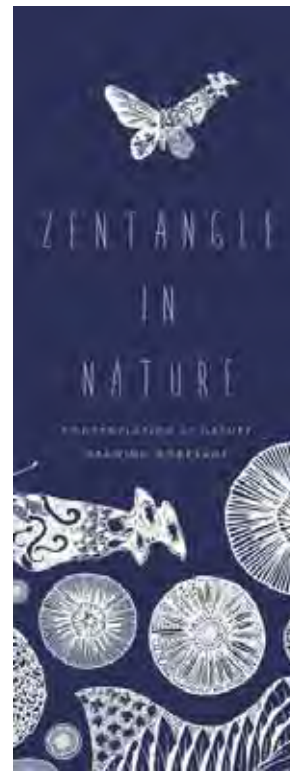






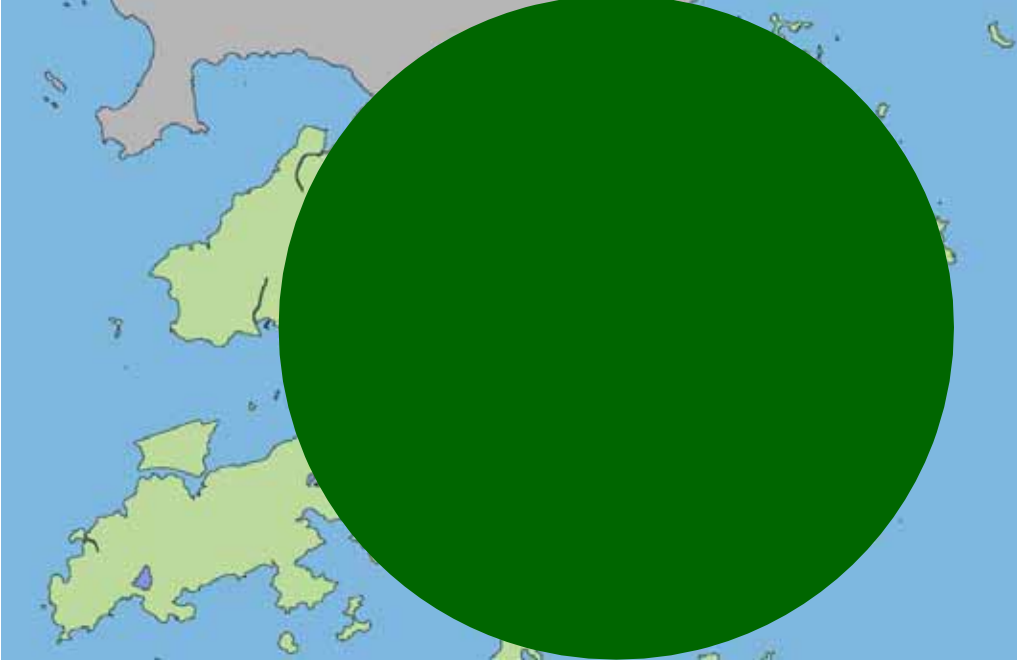
reconnecting soil, soul and society...





Collaboration
cultivates resilience for a
Low Carbon
Community

Green Hub is an Action Research to explore our own path for transition



Green Hub



Interact with the Community

Hong Kong

- Population = 7.2 million



1950s





2000



Thank You

wly@kfbg.org

www.kfbg.org

www.greenhub.hk