

Architecture and Community Innovation

by Tris Kee

Assistant Professor  
Department of Architecture  
The University of Hong Kong

CPW

Community Project Workshop

Architecture and Community Innovation. Tris Kee 2015-10-13

$(CPW) = \{ \text{Community} + \text{Workshop} \} = \text{Project}$

Architecture and Community Innovation. Tris Kee 2015-10-13

Since 2009, HKU set up Community Project Workshop  
undertook over 30+ Community Research Projects  
In Landscape, Design, Architecture and Conservation



Architecture and Community Innovation, Tris Kee 2015-10-13

Community Design (with ethnic minority group)



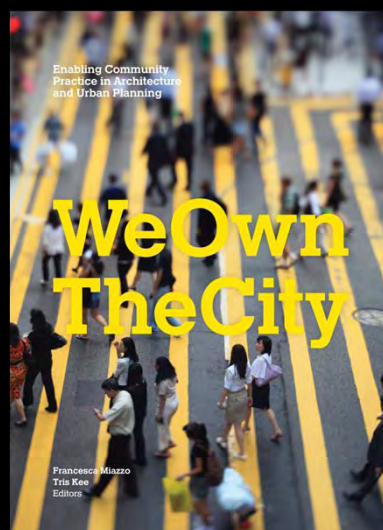
Architecture and Community Innovation, Tris Kee 2015-10-13

### Engaging HKU students in the design and innovation



Architecture and Community Innovation, Tris Kee 2015-10-13

### International Academic Symposium and Exhibition



Architecture and Community Innovation, Tris Kee 2015-10-13



Community Design (with young children) : "MY IDEAL CITY"



Architecture and Community Innovation. Tris Kee 2015-10-13

Community Design (with elderly) on Housing



Architecture and Community Innovation. Tris Kee 2015-10-13

Community Design (with elderly) on Housing



Architecture and Community Innovation. Tris Kee 2015-10-13

Community Design (with elderly) on Housing



Architecture and Community Innovation. Tris Kee 2015-10-13

Community Design (with elderly) on Housing



Architecture and Community Innovation, Tris Kee 2015-10-13

Community Design (with elderly) on Housing



Architecture and Community Innovation, Tris Kee 2015-10-13



## Value Farm @ Shenzhen Biennale with HKU Kadoorie Inst + CUHK



Architecture and Community Innovation, Tris Kee 2015-10-13

- **Re-cultivating landscape**
- **Sustainable LOHAS living**
- **Eatable products**
- **Ecological awareness**

### Value Farm: Cultivating the post-urban landscape



Value Farm is an urban agriculture project in Shenzhen that integrates architecture and productive landscapes through a collective farming effort. A 2.5-hectare open area of a disused glass factory is transformed into an expansive installation of edible plants as part of the Shenzhen Hong Kong Biennale of Urbanism/Architecture 2013.

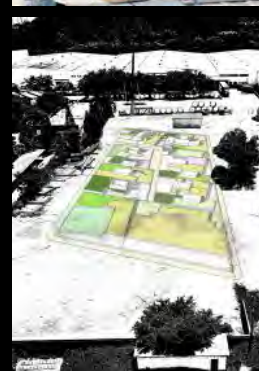
The design is inspired by Hong Kong's dense city fabric and growing initiatives, such as rooftop farms that maximize the city's habitable to small-scale food production. In Shenzhen, the farmers' old walls and many are revitalized while brick enclosures at different heights create overlap configurations to create plots suitable for a variety of crops.

Value Farm Vision: Hong Kong dreams are inspired sites of Shenzhen urban space. Public, social, housing, and market returns foster cross-border cultural dialogue. An crop yield and community participation reflects Value Farm could become a model for improving food security throughout China.

The project received the UABB Architecture Committee Award and was ranked by the committee members, "The Value Farm is an elegant, quiet of the Biennale, but there is something for the farm after the Biennale ends," said the Vice-Chairman, deputy director of the China Academy of Urban Planning & Design Shenzhen. "It is a prime example of how urban green environment can be achieved." - Yunnan Daily, January 2014

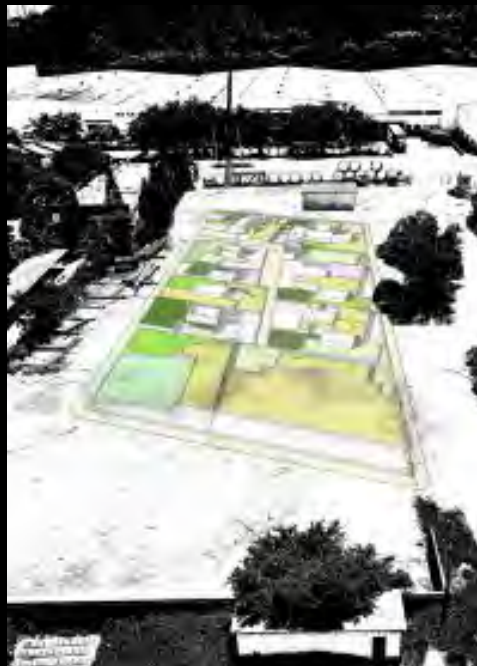
#### Acknowledgements:

Concept & Design: Shenzhen Hong Kong School of Architecture, The Chinese University of Hong Kong  
 Concept (program): Iris Kuo, Faculty of Architecture, The University of Hong Kong  
 Executive Partner: Chi Fui Fung, Farming Consultant  
 Location: Former Longsheng Food Glass Factory, Shuang, Shenzhen  
 Commissioned by: Shenzhen Biennale of Urbanism/Architecture Organizing Committee  
 Photo credit: Thomas Chung - Value Farm  
 Website: [www.valuefarm.siu.edu.hk](http://www.valuefarm.siu.edu.hk)



Architecture and Community Innovation, Tris Kee 2015-10-13

- Re-cultivating landscape
- Sustainable LOHAS living
- Eatable products
- Ecological awareness



Architecture and Community Innovation. Tris Kee 2015-10-13

### Value Farm @ Shenzhen Biennale : sharing with NGOs



Architecture and Community Innovation. Tris Kee 2015-10-13



Value Farm @ Shenzhen Biennale : sharing with local residents



Architecture and Community Innovation. Tris Kee 2015-10-13

Value Farm @ Shenzhen Biennale : unexpected outcome!



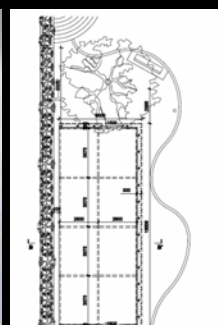
Architecture and Community Innovation. Tris Kee 2015-10-13

Value Farm @ Shenzhen Biennale : cycle of growing and sharing



Architecture and Community Innovation, Tris Kee 2015-10-13

Hong Kong Shenzhen Biennale 2011 – Kowloon Park



Architecture and Community Innovation, Tris Kee 2015-10-13



Hong Kong Shenzhen Biennale 2011 – architecture in Community



Architecture and Community Innovation. Tris Kee 2015-10-13

Hong Kong Shenzhen Biennale 2011 – student participation



Architecture and Community Innovation. Tris Kee 2015-10-13



Hong Kong Shenzhen Biennale 2011 - Innovation sharing



Architecture and Community Innovation. Tris Kee 2015-10-13

Hong Kong Shenzhen Biennale 2011 - public awareness



Architecture and Community Innovation. Tris Kee 2015-10-13

Hong Kong Shenzhen Biennale 2011 – public participation



Architecture and Community Innovation. Tris Kee 2015-10-13

HKU @ the Hong Kong International Art Fair 2011 – upcycling



Architecture and Community Innovation. Tris Kee 2015-10-13

Experimentation : concept of recycle, reuse, reduce



Architecture and Community Innovation. Tris Kee 2015-10-13

Both Design @ the Hong Kong International Art Fair 2011



Architecture and Community Innovation. Tris Kee 2015-10-13



Both Design @ the Hong Kong International Art Fair 2011



Architecture and Community Innovation. Tris Kee 2015-10-13

Upcycling used magazines – Art Basel HK



Architecture and Community Innovation. Tris Kee 2015-10-13

Student volunteer project @ Cambodia – design and build schools



Architecture and Community Innovation, Tris Kee 2015-10-13

Student volunteer project @ Cambodia – design and build schools



Architecture and Community Innovation, Tris Kee 2015-10-13



Student volunteer project @ Cambodia – design and build schools



Architecture and Community Innovation, Tris Kee 2015-10-13

Student volunteer project @ Cambodia – design and build schools



Architecture and Community Innovation, Tris Kee 2015-10-13



Student volunteer project @ Cambodia - design and build schools



Architecture and Community Innovation. Tris Kee 2015-10-13

Student volunteer project @ Cambodia - design and build schools



Architecture and Community Innovation. Tris Kee 2015-10-13

Student volunteer project @ Cambodia - design and build schools



Architecture and Community Innovation. Tris Kee 2015-10-13

$$\left[ \left[ \text{Community} + \text{Workshop} \right] = \text{Project} \right] \\ \left[ \{ \text{CPW} \} = \{ \text{Architecture} + \text{Innovation} \} \right]$$

Architecture and Community Innovation. Tris Kee 2015-10-13